



18 Sir Josephs Lane, Darley Dale, Derbyshire, DE4 2GY

Saxton Mee

18 Sir Josephs Lane

Darley Dale

Offers Over

£300,000

Detached family home in cul-de-sac location!

A well presented three bedroom detached property with garage, off road parking and easily managed gardens. Occupying a peaceful setting on a cul-de-sac in the sought after village of Darley Dale on the edge of the Peak District National Park. Close to local shops, amenities, leisure facilities and public transport links with many more facilities available at nearby Bakewell and Matlock. Within highly regarded school catchment and easy commutable distance of major commercial centres.

With gas central heating and double glazing the accommodation comprises: entrance hallway with built in storage and WC. A fitted breakfast kitchen, conservatory/utility, a sitting room and dining room.

First floor: landing with built in storage cupboard, a double bedroom with built in wardrobes and en-suite shower room, two double bedrooms, further family bathroom. Exterior: a driveway leads to the attached single garage. The easily managed gardens border the property to three sides.

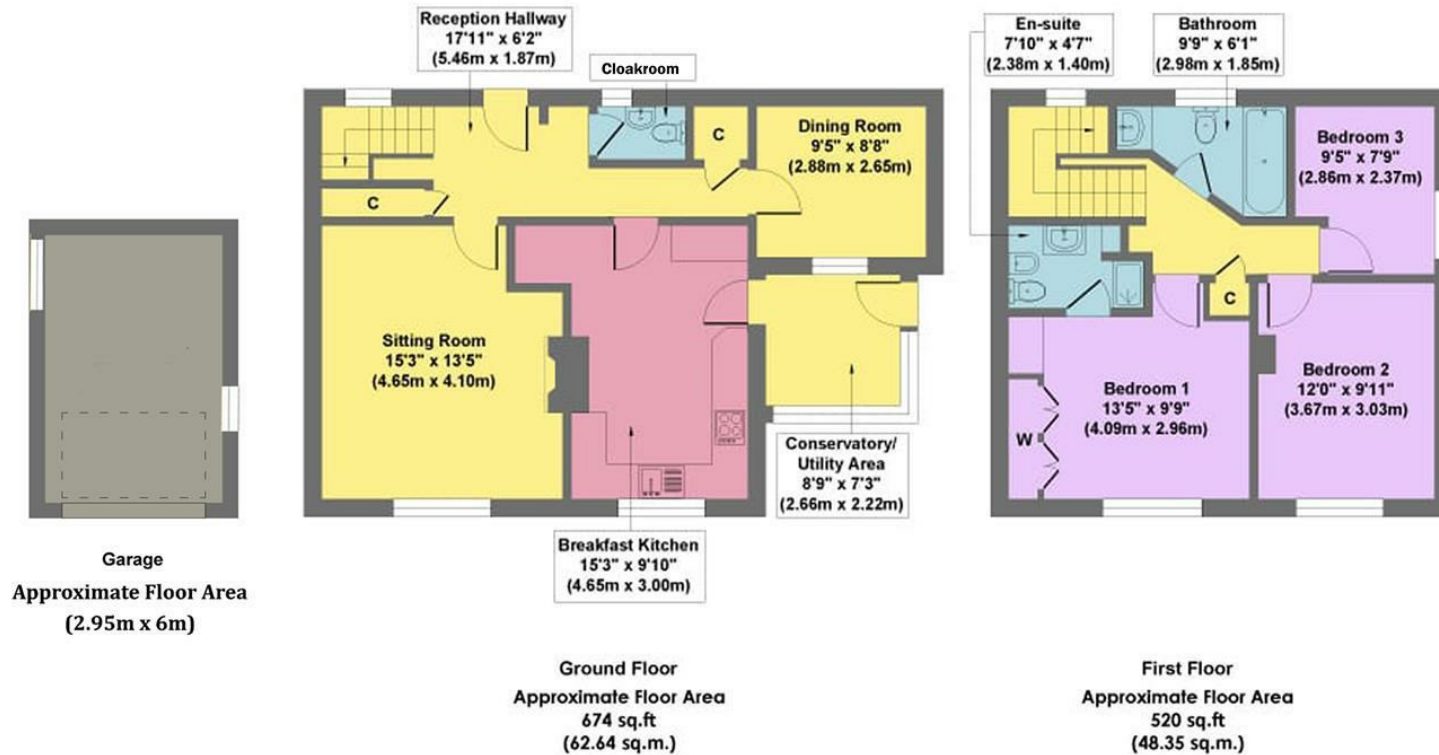


- Popular Residential Setting
- Close To Local Amenities
- Within Highly Regarded School Catchment
- Easy Reach Of Bakewell & Matlock
- Access To Many Local Walks
- Gas Central Heating & Double Glazing
- Peaceful Cul De Sac
- Garage & Off Road Parking
- EPC: D
- Viewings: Bakewell Office





18 Sir Josephs Lane



Approx. Gross Internal Floor Area 1195 sq.ft / 110.99 sq.m

Illustration for identification purposes only, measurements are approximate, not to scale

While we endeavour to make our sales particulars fair, accurate and reliable, they are only a general guide to the property and, accordingly, if there is any point, which is of particular importance to you, please contact the relevant office. The Agents have not tested any apparatus, equipment, fittings or services and so cannot verify they are in working order. The buyer is advised to obtain verification. Please note all the measurement details are approximate and should not be relied upon as exact. All plans, floor plans and maps are for guidance purposes only and are not to scale. Under no circumstances should they be relied upon as exact or for use in planning carpets and other such fixtures, fittings or furnishings. YOUR HOME IS AT RISK IF YOU DO NOT KEEP UP REPAYMENTS ON A MORTGAGE OR OTHER LOAN SECURED ON IT. 'A Life Assurance policy may be requested.' 'Written Quotations of credit terms available on request.'

Banner Cross
T: 0114 268 3241
E: bannercross@saxtonmee.co.uk
www.saxtonmee.co.uk

Hathersage
T: 01433 650009
E: hathersage@saxtonmee.co.uk

Bakewell
T: 01629 815307
E: bakewell@saxtonmee.co.uk

Matlock
T: 01629 828250
E: matlock@saxtonmee.co.uk

