



1 Moorview, Flagg, Derbyshire, SK17 9QY



1 Moorview

Flagg

Offers In The Region Of

£285,000

Impressive Countryside Views.

Nestled within the picturesque rural village of Flagg, this charming three-bedroom end terrace property offers a peaceful retreat surrounded by the stunning Derbyshire countryside. Conveniently located within easy reach of both Bakewell and Buxton, as well as the neighbouring villages, with easy access to essential amenities and major commercial centres.

The village of Flagg boasts a thriving community and falls within the highly regarded catchment areas for both primary and secondary schools.

The accommodation is well-appointed with oil fired central heating and double glazing, with a front entrance lobby leading to a sitting room with exposed beams and a stone hearth housing a log burning stove. The sitting room flows into the dining room. The dual aspect fitted kitchen with a free-standing cooker and views of the surrounding countryside. Separate WC.

To the first floor, a landing leading to a double bedroom, a dual aspect double bedroom, a bathroom and a further bedroom.

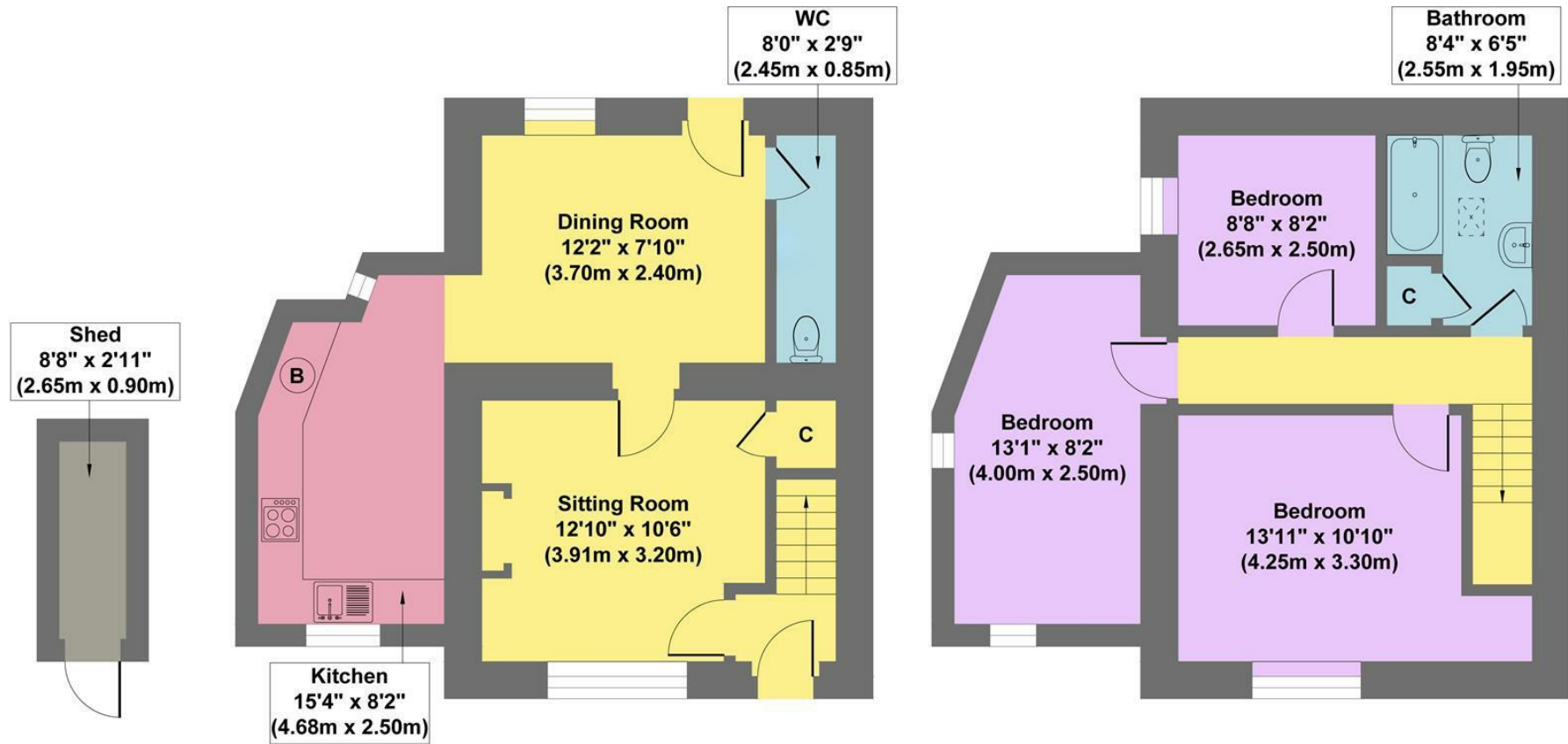
Outside, the property boasts an easily managed front garden, ideal for enjoying the view. A useful store to the rear provides additional storage space.

With no upward chain.

- Peaceful Rural Village Setting
- Ideal Main Home Or Investment Property
- Easily Managed Gardens
- Local Primary School
- Countryside Views
- Commutable Distance Of Amenities Within Bakewell & Buxton
- Direct Access to Many Local Walks
- No Upward Chain
- EPC: D
- Viewings: Bakewell Office







Outbuilding
 Approximate Floor Area
 26 sq.ft
 (2.38 sq.m.)

Ground Floor
 Approximate Floor Area
 498 sq.ft
 (46.29 sq.m.)

First Floor
 Approximate Floor Area
 504 sq.ft
 (46.86 sq.m.)

Approx. Gross Internal Floor Area 1028 sq.ft / 95.53 sq.m

Illustration for identification purposes only ,measurements are approximate, not to scale

While we endeavour to make our sales particulars fair, accurate and reliable, they are only a general guide to the property and, accordingly, if there is any point, which is of particular importance to you, please contact the relevant office. The Agents have not tested any apparatus, equipment, fittings or services and so cannot verify they are in working order. The buyer is advised to obtain verification. Please note all the measurement details are approximate and should not be relied upon as exact. All plans, floor plans and maps are for guidance purposes only and are not to scale. Under no circumstances should they be relied upon as exact or for use in planning carpets and other such fixtures, fittings or furnishings. YOUR HOME IS AT RISK IF YOU DO NOT KEEP UP REPAYMENTS ON A MORTGAGE OR OTHER LOAN SECURED ON IT. *A Life Assurance policy may be requested.* *Written Quotations of credit terms available on request.*