



John Bank Cottage, 2 Woodland Terrace John Bank Lane, Ashford-In-The-

Saxton Mee

2 Woodland Terrace John

Ashford-In-The-Water

Offers In The Region Of

£205,000

A Charming Derbyshire Cottage

The Perfect Doer-Upper

A charming two bedroom stone built mid terrace cottage, occupying a peaceful setting on the edge of the idyllic village of Ashford In The Water. With views across the adjoining Derbyshire countryside and easy reach of the excellent range of amenities, nearby Bakewell has to offer.

Ideally suited as a main home or holiday cottage and well placed for local walks and outdoor pursuits as well as the many adjoining Peak District villages.

The property would benefit from modernisation and cosmetic enhancement throughout and the accommodation comprises: a fitted kitchen and walk in pantry and a sitting room with a sash window and a tiled fireplace and hearth with an open fire grate.

First floor: landing, a double bedroom with a sash window, a bathroom and a further bedroom.

Exterior: two exterior stores, a shared open fronted store and a small garden accessed by a pathway at the rear.

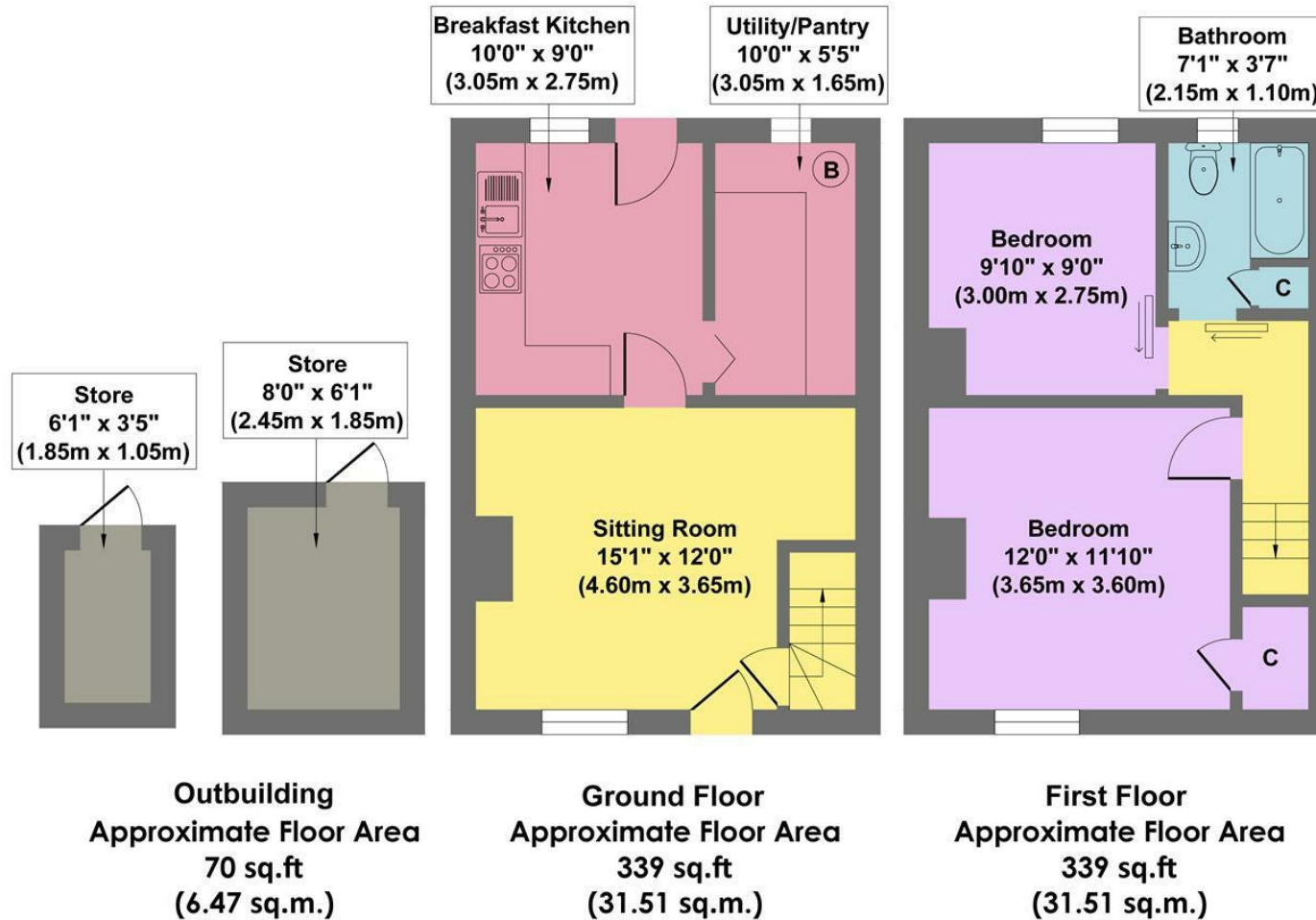
No Upward Chain

- Ideal Main Home Or Holiday Cottage
- Easily Managed Garden & Stone Stores
- In Need Of Modernisation & Cosmetic Enhancement
- Close To Excellent Amenities & Leisure Facilities
- On The Edge Of Ashford In The Water
- Peaceful Setting
- Countryside Views
- No Upward Chain
- EPC: Rating D
- Viewings: Bakewell Office





2 Woodland Terrace



Approx. Gross Internal Floor Area 748 sq.ft / 69.49 sq.m

Illustration for identification purposes only, measurements are approximate, not to scale

While we endeavour to make our sales particulars fair, accurate and reliable, they are only a general guide to the property and, accordingly, if there is any point, which is of particular importance to you, please contact the relevant office. The Agents have not tested any apparatus, equipment, fittings or services and so cannot verify they are in working order. The buyer is advised to obtain verification. Please note all the measurement details are approximate and should not be relied upon as exact. All plans, floor plans and maps are for guidance purposes only and are not to scale. Under no circumstances should they be relied upon as exact or for use in planning carpets and other such fixtures, fittings or furnishings. YOUR HOME IS AT RISK IF YOU DO NOT KEEP UP REPAYMENTS ON A MORTGAGE OR OTHER LOAN SECURED ON IT. *A Life Assurance policy may be requested.* *Written Quotations of credit terms available on request.*