



Guide Price £575,000

51 Bucknalls Drive, Bricket Wood, St. Albans, AL2 3XJ



CARTER HAYWARD
INDEPENDENT ESTATE AGENTS



- No Upper Chain
- Potential For Further Expansion
- Detached Bungalow
- Two Bedrooms
- Kitchen
- Bathroom
- Off Street Parking
- Council Tax Band F
- Close To Local Amenities
- Good Road Links

NO UPPER CHAIN Situated in a sought after and popular location within Bricket Wood, St Albans, this two bedroom detached bungalow requires a cosmetic update to unlock its full potential. The home also has the opportunity for further expansion.

The property begins with a welcoming entrance hallway. The generous sized sitting room gives you access leading into the dining area of the home. There is a kitchen/dining room measuring 22'3x11'6 and has access out to the rear garden.

There are two bedrooms on offer, the second bedroom flows into a separate versatile area which could be modified into an en suite or office ideal for homeworking. Completing the accommodation is a spacious three piece bathroom.

Outside, the rear garden comes mainly laid to lawn with a patio area. To the front of the home there is off street parking for multiple vehicles.

Viewings strictly by appointment through Carter Hayward on 01923 682888.





Bucknalls Drive AL2

Approximate Gross Internal Floor Area = 100.8 sq m / 1085 sq ft

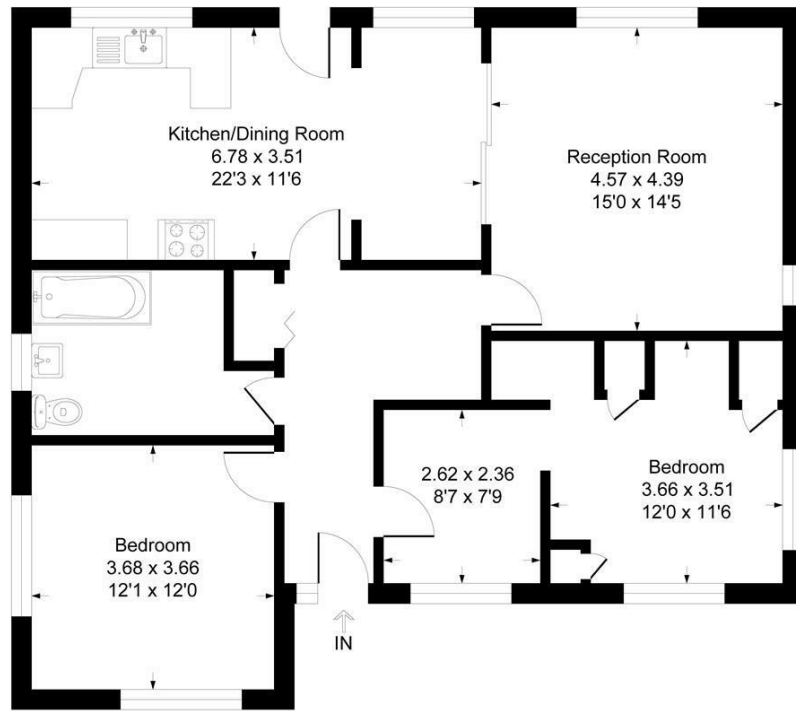


Illustration for identification purposes only, measurements are approximate, not to scale.



CARTER HAYWARD
INDEPENDENT ESTATE AGENTS

www.carterhayward.co.uk

119 Oakwood Road, Bricket Wood, St
Albans, Hertfordshire, AL2 3QB

01923 682 888

sales@carterhayward.co.uk



Energy Efficiency Rating	
Current	Potential
Very energy efficient - lower running costs	
(92 plus) A	
(81-91) B	
(69-80) C	
(55-68) D	
(39-54) E	
(21-38) F	
(1-20) G	
Not energy efficient - higher running costs	
	55
	14
England & Wales	EU Directive 2002/91/EC

Environmental Impact (CO ₂) Rating	
Current	Potential
Very environmentally friendly - lower CO ₂ emissions	
(92 plus) A	
(81-91) B	
(69-80) C	
(55-68) D	
(39-54) E	
(21-38) F	
(1-20) G	
Not environmentally friendly - higher CO ₂ emissions	
England & Wales	EU Directive 2002/91/EC

