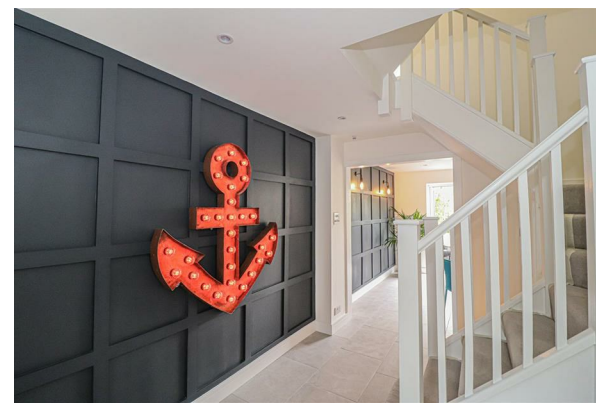




TO LET



21 Marine Court, Southsea, Hampshire, PO4 9QU

£2,000 Per month

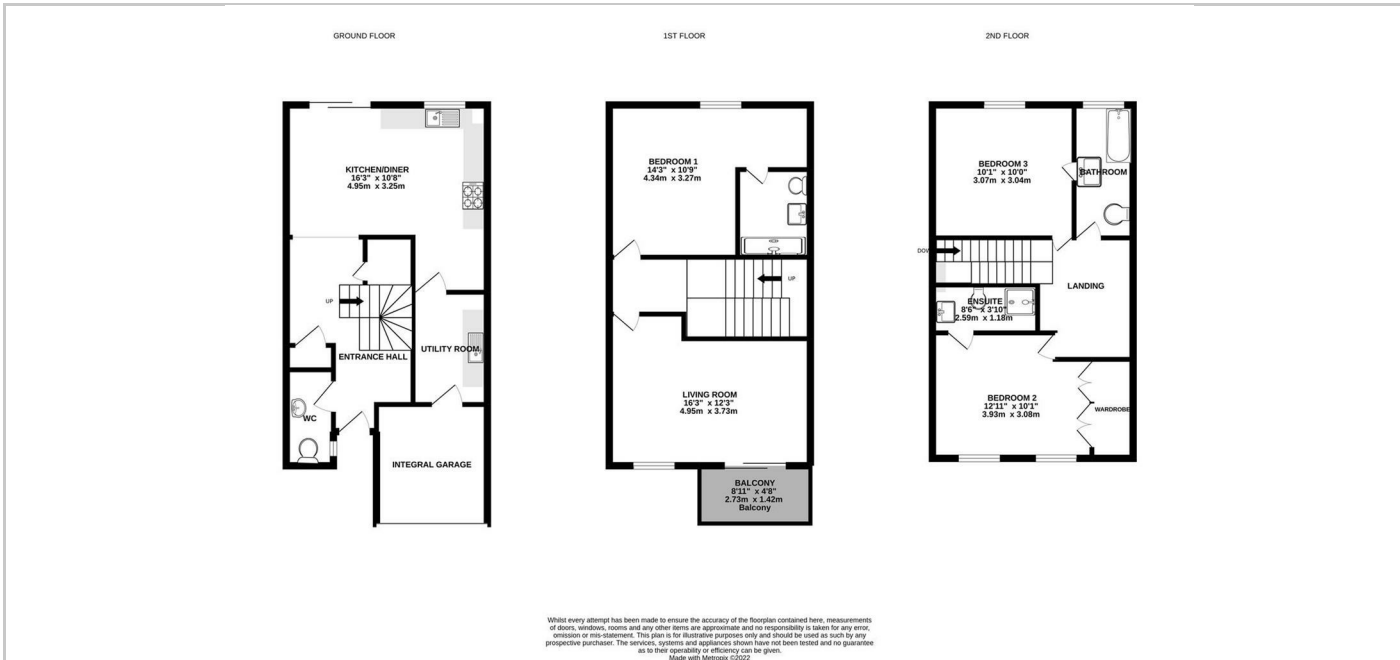


THE PROPERTY

New to the rental market is this newly modernized and spacious town house situated in a popular residential location set just back from the beach, with a large rear garden, south west facing balcony and off road parking. Entrance level, the accommodation provides: entrance hall, w/c, utility room, integral garage with power and lighting (not suitable for car) and kitchen/diner with double doors opening out to the garden. The first floor has a lovely size sitting room with double doors out on to the balcony with views towards the Solent, and a master bedroom with a modern shower, toilet and basin. On the second floor there are two further bedrooms, one with en suite shower, and family bathroom. The property also benefits from double glazing, gas central heating, under floor heating to the ground floor and also offering sea views. To arrange an internal inspection please contact Lawson Rose Estate Agents.

EPC - C

Council Tax - F



SITUATION

Directions