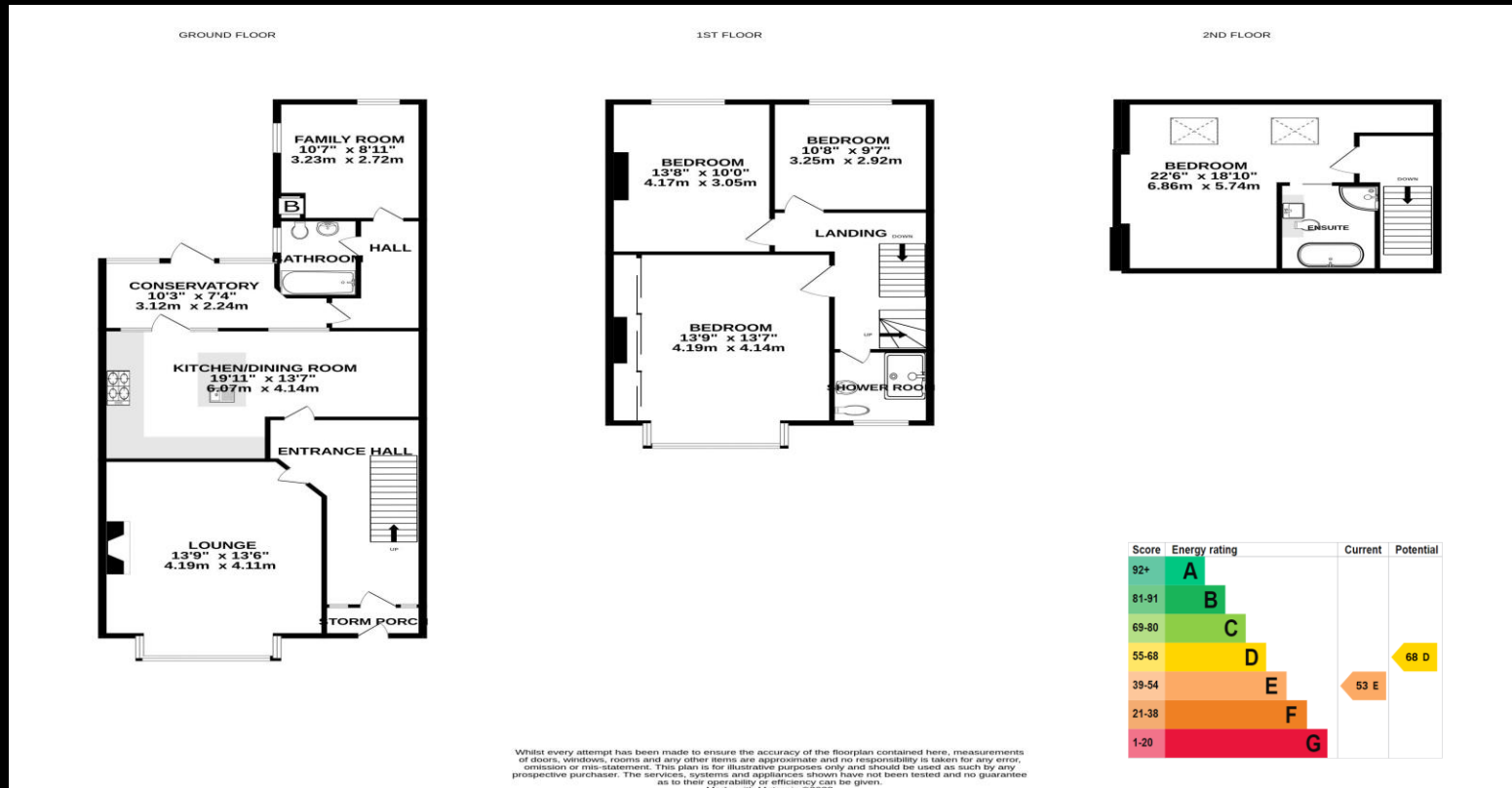




FOR SALE
£595,000
115 Festing Grove,
Southsea, PO4 9QE.

ESTATE  AGENTS

**LAWSON
ROSE**



This substantial four bedroom, double bay & forecourt property has accommodation set over three floors and could make for the ideal family home in the heart of Southsea. Located in the highly requested Festing Grove, not far from the seafront & promenade, the property provides a bright and spacious living room with feature log burner and ceiling rose. There is a beautiful open plan kitchen/ dining area with access to the rear conservatory that overlooks the garden. To the rear of the property is a stylish bathroom and an additional reception room currently used as a gym. The first floor then provides three great sized double bedrooms, all of which have an array of built in wardrobes, plus a contemporary fitted shower room. The top floor then provides the master bedroom, complete with Velux windows and its own four piece fitted en-suite bathroom. The house is immaculately finished in our opinion with a brilliant mix of modern style and original character, additionally offering double glazed, gas central heating, under floor heating in places plus rear and front sola panels. Outside is an enclosed 46Ft Rear garden with shared rear pedestrian access to its rear. We highly recommend an internal viewing to appreciate the space and finish on offer, so for further information or to arrange an internal viewing, please contact the Lawson Rose sales office today.

Services

Electricity, gas, mains water and mains drainage are available. Please note that none of the services or appliances have been tested by Lawson Rose.

Council Tax - Band E



