



ESTATE AGENTS
**LAWSON
ROSE**

FOR SALE

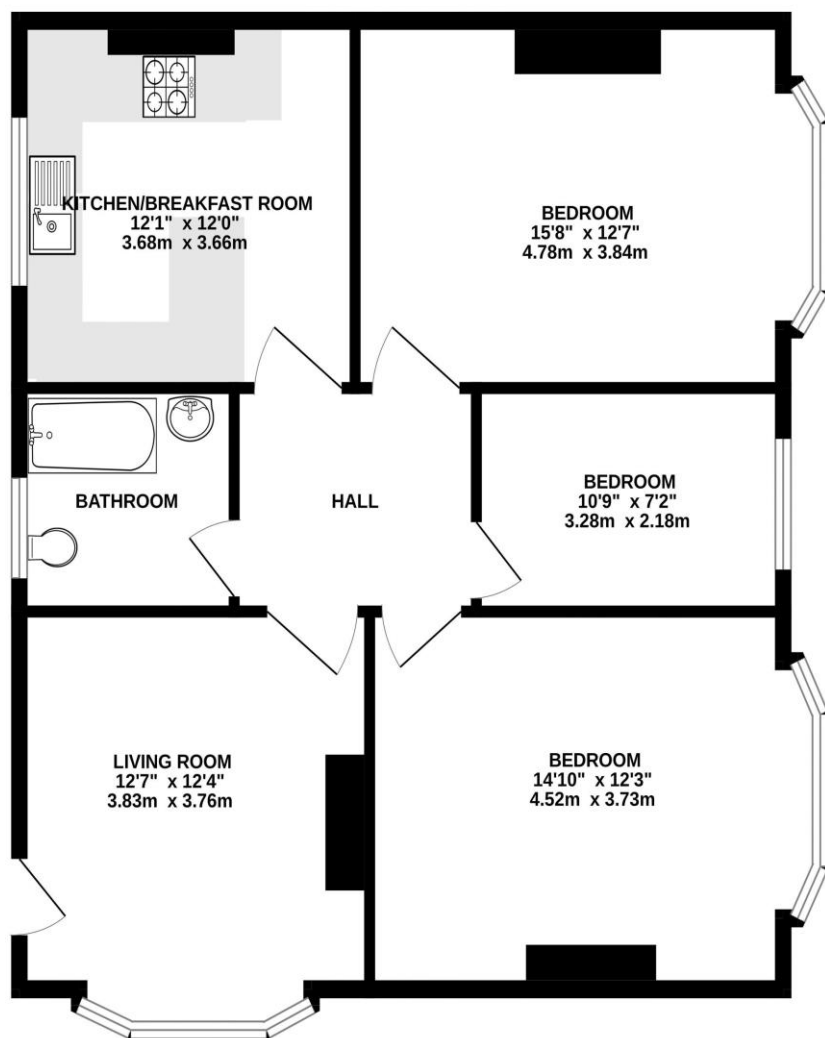
£225,000

Waverely court Flat 1 Waverley Grove,
Southsea, PO4 0PZ.

ESTATE  AGENTS

**LAWSON
ROSE**

GROUND FLOOR



Whilst every attempt has been made to ensure the accuracy of the floorplan contained here, measurements of doors, windows, rooms and any other items are approximate and no responsibility is taken for any error, omission or mis-statement. This plan is for illustrative purposes only and should be used as such by any prospective purchaser. The services, systems and appliances shown have not been tested and no guarantee as to their operability or efficiency can be given.
Made with Metropix ©2023

£225,000

**Waverely court Flat 1 Waverley Grove,
Southsea**

This three bedroom, first floor flat with allocated off road parking and a share of the freehold could make for an ideal first time or investment purchase. Located in central on the corner of Waverley Grove and Waverley Road, not far from local amenities and the waterfront, the property provides a spacious living room with a large bay window, three good sized bedrooms, two of which have impressive bay's giving plenty of natural light, plus a fitted bathroom and a sizeable kitchen/ breakfast room. Outside is a recently renovated garden frontage and a car park with an allocated space for the apartment. Given the opportunity on offer, we highly recommend an internal viewing, so for further information to arrange a time to view, please contact the Lawson Rose sales office on 02392 367779.

Services

Electricity, gas, mains water and mains drainage are available. Please note that none of the services or appliances have been tested by Lawson Rose.

Council Tax - Band B

Tenure - Share Of The Freehold



02392 367 779 - contactus@lawsonrose.com

131 Winter Road, Southsea, P04 8DS



