



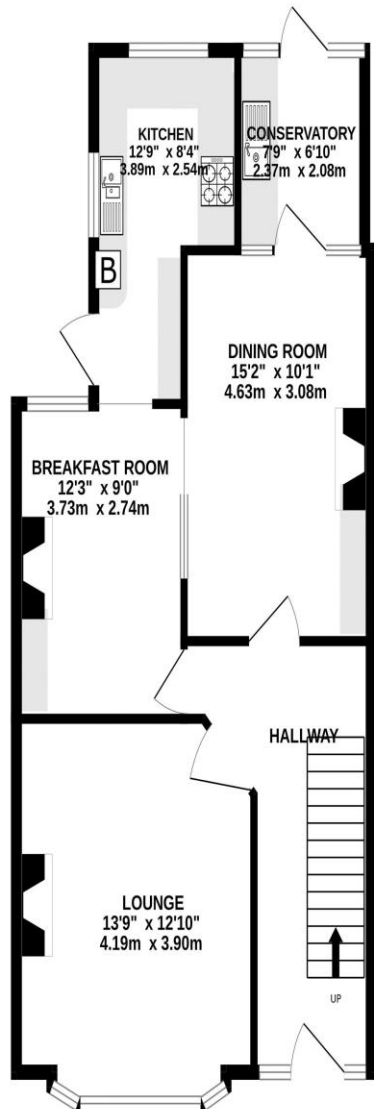
ESTATE AGENTS
**LAWSON
ROSE**

FOR SALE
£360,000
9 Liss Road,
Southsea, PO4 8AP.

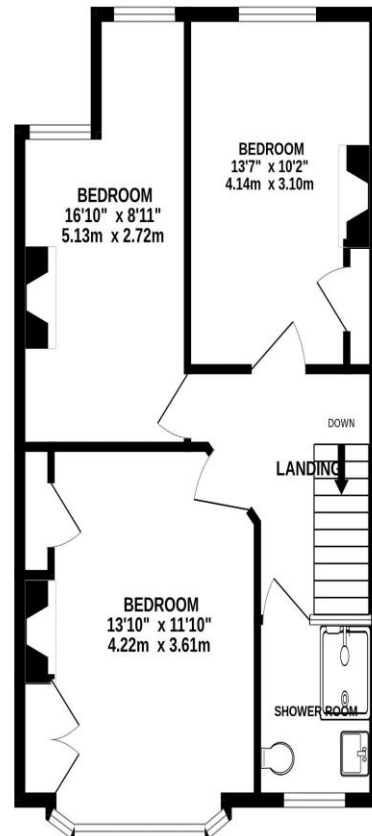
ESTATE  AGENTS

**LAWSON
ROSE**

GROUND FLOOR



1ST FLOOR



£360,000

9 Liss Road, Southsea

This substantial double bay & forecourt property in the Liss road is now available to view with Lawson Rose. Situated in a popular pocket of PO4, this imposing, much loved family home boasts an array of original features & characterises throughout the home, providing a eye catching hallway with tiled flooring, a spacious living room with feature fireplace, large bay window and ceiling rose, plus an open plan secondary dining/ breakfast room, again with ample period features which leads to the fitted kitchen and rear lean to/ utility room. The first floor then provides three great sized double bedrooms, all of which have built in wardrobes and feature fireplaces, plus the fitted upstairs shower room. Additionally the home is double glazed and gas centrally heated, plus outside is a well kept 27Ft rear garden with a brock built shed for storage. We highly recommend an internal viewing for the property to appreciate the space and character on offer, so for further information or to enquire on viewing arrangements, please contact our sales team who will be able to assist.

Services

Electricity, gas, mains water and mains drainage are available. Please note that none of the services or appliances have been tested by Lawson Rose.

Council Tax - Band B



02392 367 779 - contactus@lawsonrose.com

131 Winter Road, Southsea, P04 8DS

Whilst every attempt has been made to ensure the accuracy of the floorplan contained here, measurements of doors, windows, rooms and any other items are approximate and no responsibility is taken for any error, omission or mis-statement. This plan is for illustrative purposes only and should be used as such by any prospective purchaser. The services, systems and appliances shown have not been tested and no guarantee as to their operability or efficiency can be given.
Made with Metropix ©2023



