

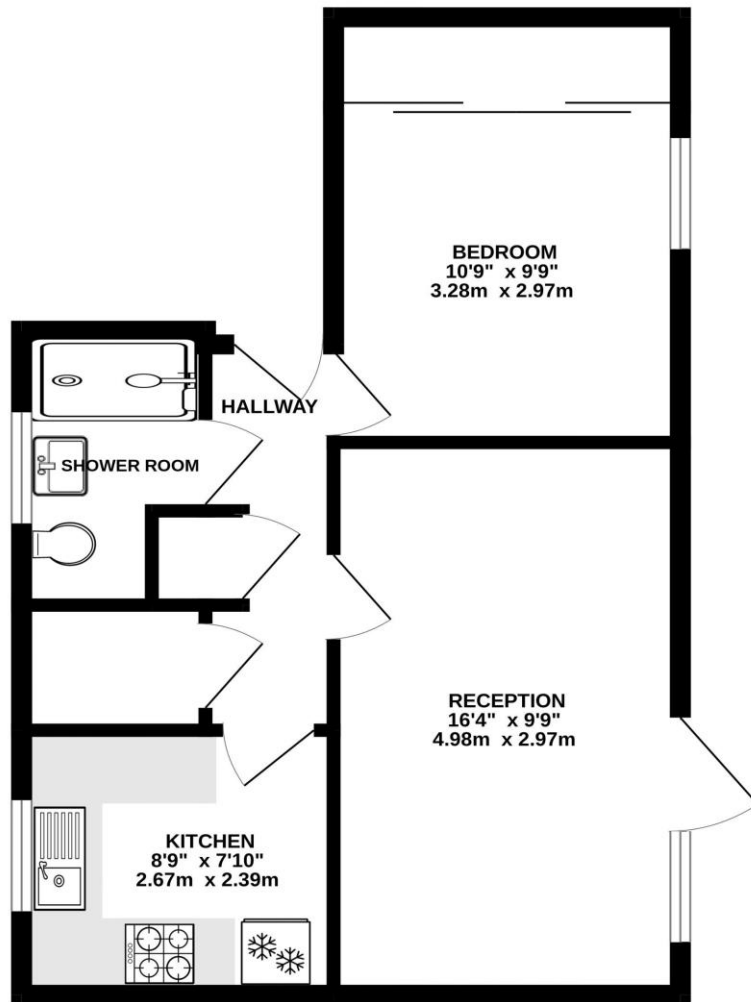


FOR SALE
£150,000
9 Redwing Court,
Southsea, PO4 8PB.



**LAWSON
ROSE**

GROUND FLOOR



Whilst every attempt has been made to ensure the accuracy of the floorplan contained here, measurements of doors, windows, rooms and any other items are approximate and no responsibility is taken for any error, omission or mis-statement. This plan is for illustrative purposes only and should be used as such by any prospective purchaser. The services, systems and appliances shown have not been tested and no guarantee as to their operability or efficiency can be given.
Made with Metropix ©2023

£150,000

**9 Redwing Court,
Southsea**

Redwing Court is located in a quiet cul-de-sac, set back of Warren Avenue in Milton. This ground floor apartment is located in a private residence and offers a modern fitted kitchen and shower room, storage cupboards, a large master bedroom with an array of built in wardrobes, plus a spacious living room with a door opening into the enclosed communal gardens. Potentially an ideal first time or investment opportunity, we highly recommend an internal viewing to appreciate what's on offer. For further information or to arrange an internal viewing, please contact the Lawson Rose sales office today.

Services

Electricity, mains water and mains drainage are available. Please note that none of the services or appliances have been tested by Lawson Rose.

Council Tax - Band B

Term - 125 Years from the 31st October 1986
Management Company: Clarion Housing
Total Service Charge: £501.31 P/A
Ground Rent - £10 P/A



02392 367 779 - contactus@lawsonrose.com

131 Winter Road, Southsea, P04 8DS



