



5 Acres East of Glanrhyd House, Llanddewi Velfrey, SA67 7PE

Offers In The Region Of £25,000

Approximately 5 acres of level land along the Llanddewi Velfrey to Llanfallteg road, being mainly overgrown with sapling trees and scrub, bordered by the small river Daulan.

Situation

The land occupies a rural setting in the periphery of the village of Llanfallteg which lies on the border of the counties of Carmarthenshire and Pembrokeshire. It lies within a mile or so of the A40 and the village of Llanddewi Velfrey, which has the benefit of a garage and a convenience store, with further local services available in the nearby settlements of Clynderwen and Llandissilio. Llanfallteg itself has a public house and a popular village hall. The small towns of Narberth and Whitland are also within easy reach, and these both provide a reasonable range of services and amenities that cater for most everyday requirements. Despite its rural setting, the proximity of the A40 ensures that the larger towns of Haverfordwest and Carmarthen, which are the county towns of Pembrokeshire and Carmarthenshire respectively, are within relatively easy reach and these are the major employment centres in the area although several other towns are also within easy car driving distance. The coastal resorts of South Pembrokeshire coastline are also within relatively easy reach.

Description

Approximately 5 acres of land which is some what overgrown but great for nature/wildlife. Please refer to our plan for identification. The land has no planning permission and is being sold purely as scrub land.

Services

None connected.

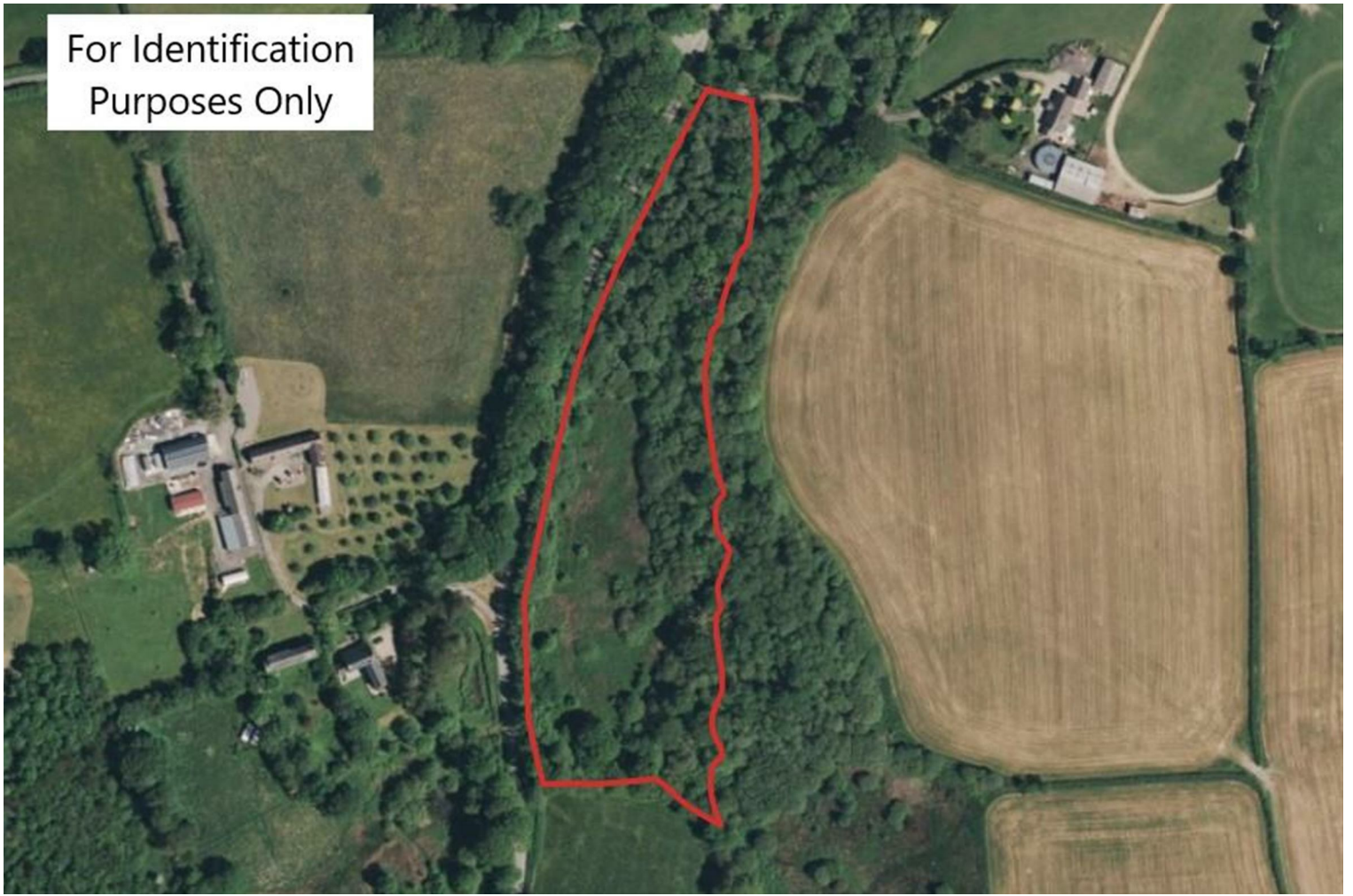
Tenure

Freehold upon completion.

Directions

From Narberth travel along the A478 to the Penblewin roundabout and turn right onto the A40 heading in the direction of Whitland. You will then come into the village of Llanddewi Velfrey, turn left here signposted Llanfallteg. The land is found along this road on the right hand side, as identified by our JJ Morris for sale sign.

For Identification
Purposes Only



Area Map



These particulars, whilst believed to be accurate are set out as a general outline only for guidance and do not constitute any part of an offer or contract. Intending purchasers should not rely on them as statements of representation of fact, but must satisfy themselves by inspection or otherwise as to their accuracy. No person in this firm's employment has the authority to make or give any representation or warranty in respect of the property.

5 High Street, Cardigan,
Ceredigion, SA43 1HJ
T: 01239 612 343
E: cardigan@jjmorris.com

21 West Street, Fishguard
Pembrokeshire, SA65 9AL
T: 01348 873 836
E: fishguard@jjmorris.com

4 Picton Place, Haverfordwest
Pembrokeshire, SA61 2LX
T: 01437 760 440
E: haverfordwest@jjmorris.com

Hill House, Narberth,
Pembrokeshire, SA67 7AR
T: 01834 860 260
E: narberth@jjmorris.com