



Winllan , Boncath, SA37 OJR

£900,000

A stunning architecturally designed, five bedroom family home with 16 acres of land situated in a rural setting on the outskirts of the Pembrokeshire village of Boncath. The accommodation has been tastefully designed and briefly comprises: Hall, Cloakroom, Snug, Cinema Room, Living Room, Kitchen/Dining/Family Room which is undoubtedly the focal point for the entire property, Utility Room, Boot Room and W.C. The first floor boasts a Master Suite with Dressing Room, Ensuite Shower Room, Walk-In- Airing Cupboard. There are Four Further Bedrooms and a Family Bathroom. Externally there is a mixture of woodland and pasture with great amenity appeal along with a Workshop and Two Hay Barns.

Situation

The property is found in a rural location in an area with mainly scattered smallholdings and farms as neighbours. The nearby village of Boncath has a small shop for basic everyday goods. The village of Crymych is a few miles distant with shops and amenities including primary and secondary schooling and leisure centre. Cardigan town is approx 8 miles distant and has a shopping high street with national and local independent retailers, supermarkets and educational facilities with schooling and college. Places of special interest include the Preseli Hills which provide miles of trails within the National Park and from where superb views and natural scenery are enjoyed which is found approx 3 miles away. The Pembrokeshire and Ceredigion coast is found approx 8 miles distant with many stunning beaches and coves, excellent cliff top walks, and within Cardigan Bay is a wealth of flourishing marine life. Other large towns in the area include Carmarthen, which has excellent dual carriageway road links to the M4 Motorway, Newcastle Emlyn, Narberth, Haverfordwest and Fishguard, which are all within roughly 30 to 40 minutes drive.

Composite door to:

Hall



Tiled flooring, radiator, oak stair case rising to the first floor, opening to:

Cloakroom



Tiled flooring, radiator, window to the front.

Snug



Wood burning stove set on a slate hearth with recessed wooden beam over, two radiators, solid oak flooring, wall lights, coved ceiling.

Cinema Room/Study



Solid oak flooring, window to the side, coved ceiling, radiator.

Living Room



A stunning light and airy room with feature curved contemporary wood burning stove and exposed flue, three Velux roof windows, exposed oak beams, windows to two sides, double doors leading to the garden, glazed gable. Solid oak flooring, wall lights, television recess, radiators.

Kitchen/Dining/Family Room



Fantastically designed and executed, it forms the perfect hub for the owners to enjoy, enjoying a wonderful farmhouse style with a range of solid wood cabinets with stone work surfaces, upstands and splashback, large central island, twin electric ovens, five burner gas hob with

concealed extractor fan. Integrated fridge, freezer, dishwasher and wine cooler, inset 1.5 bowl sink unit with pull out mixer tap, recessed lighting, vertical radiators, sliding doors to the garden, tiled flooring. Door to:

Utility Room



Fitted with a range of wall and base units, void and plumbing for washing machine, space and plumbing for large fridge/freezer, tiled flooring. Door to:

W.C.

Low flush w.c. Wall mounted hand wash basin, tiled flooring, recessed spotlights.

Boot Room

Range of full height cabinets, tiled flooring, doors to the front and rear, window.

FIRST FLOOR

Oak stair case with half landing window seat with shelving providing an ideal place to read.

Landing



Storage cupboard, doors to:

Master Suite



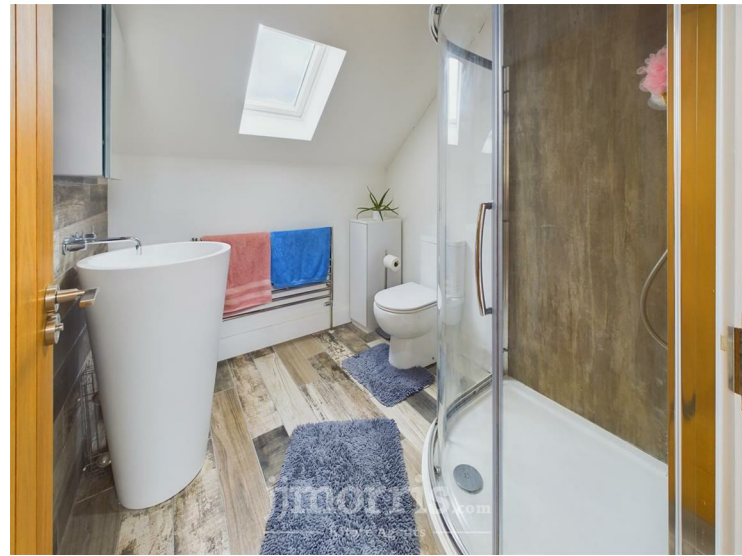
A fantastic space with large window over looking the garden and a further window to the side. Floating wall with over-bed lighting, expertly hiding the fitted wardrobes and shelving, recessed lighting. Radiators.

Dressing Area



Velux roof windows, radiator, recessed lighting. Doors to:

Ensuite Shower Room



Corner shower enclosure with rainfall shower head, aqua wall panels, feature hand wash basin with wall mounted mixer tap, low flush w.c. Extractor fan, heated towel rail, recessed lighting, Velux roof window, tiled wall and flooring.

Walk-In Airing Cupboard

Returning to the landing, doors lead to:

Bedroom Two



Dual aspect windows to the front and side, fitted wardrobe, radiator.

Bedroom Four



Window to the side, radiator.

Bedroom Three



Window to the front, fitted wardrobe, radiator.

Bedroom Five



Velux roof window, radiator.

Family Bathroom



A highly appointed four piece suite comprising: Slipper bath with mixer tap and shower attachment, corner shower enclosure with electric shower, low flush w.c. Vanity unit with inset hand wash basin and stone work top with storage below. Wall mounted mirror with wall lights, tiled walls, extractor fan, Velux roof window, tiled flooring and heated towel rail.

Externally



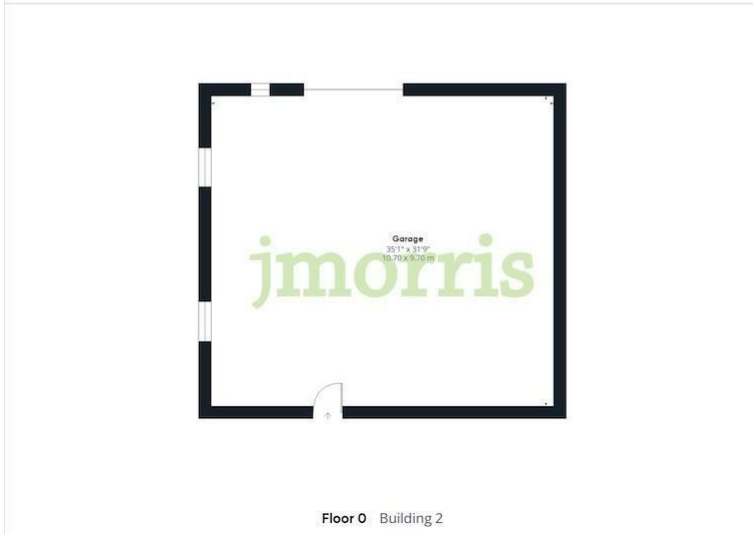
The property is approached via a gravelled parking area to the fore with wooden gates to the side leading to the:

Detached Garage/Workshop (35x31) with light and power, double doors to the front with a pedestrian entrance to the rear, three windows. Immediately to the rear of the property is a sunken patio area with access from the kitchen and living room. There are lawned gardens leading to the stream. There is a mixture of woodland with fantastic bluebells and pasture with great amenity appeal along with Two Hay Barns and a Chicken House/enclosure.

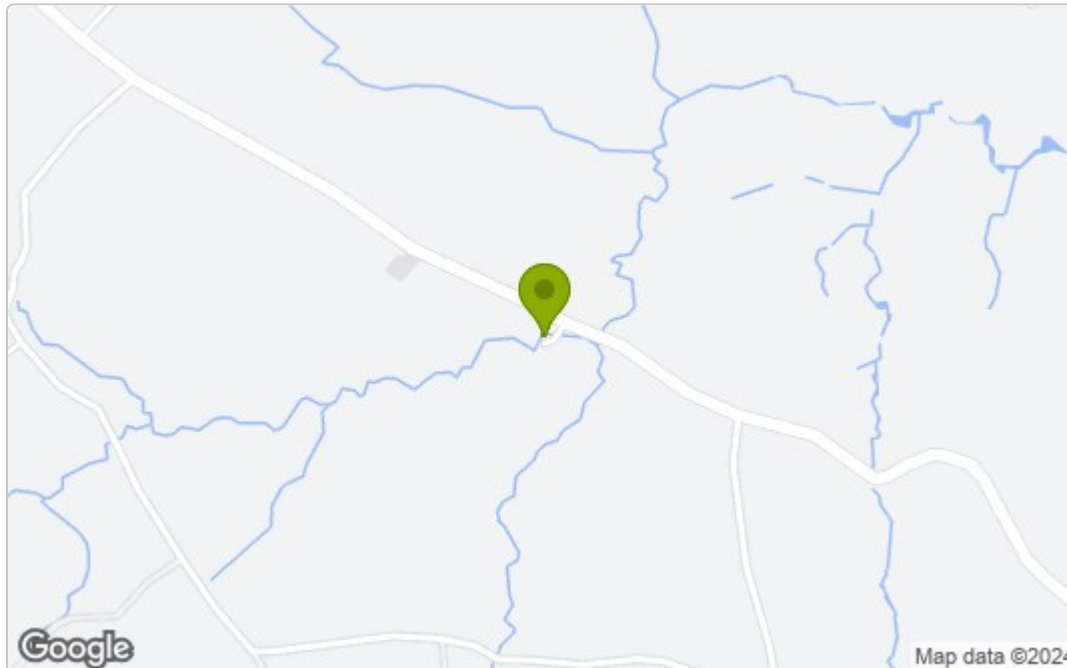




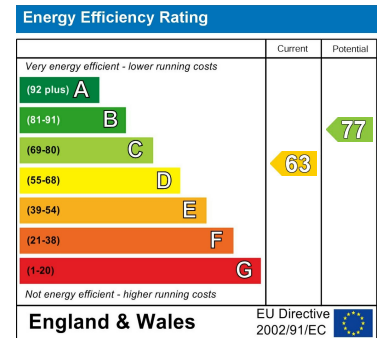
Floor Plan



Area Map



Energy Efficiency Graph



These particulars, whilst believed to be accurate are set out as a general outline only for guidance and do not constitute any part of an offer or contract. Intending purchasers should not rely on them as statements of representation of fact, but must satisfy themselves by inspection or otherwise as to their accuracy. No person in this firm's employment has the authority to make or give any representation or warranty in respect of the property.

5 High Street, Cardigan,
Ceredigion, SA43 1HJ
T: 01239 612 343
E: cardigan@jjmorris.com

21 West Street, Fishguard
Pembrokeshire, SA65 9AL
T: 01348 873 836
E: fishguard@jjmorris.com

4 Picton Place, Haverfordwest
Pembrokeshire, SA61 2LX
T: 01437 760 440
E: haverfordwest@jjmorris.com

Hill House, Narberth,
Pembrokeshire, SA67 7AR
T: 01834 860 260
E: narberth@jjmorris.com