



**£1,100 PCM**    *Unfurnished*



AVAILABLE NOW - UNFURNISHED

Well presented 1 bedroom, first floor maisonette. Walking distance to town centre and HIGH WYCOMBE TRAIN STATION with it's fast link to Marylebone make this ideal for a London commuter. Offered unfurnished the accommodation comprises:-

Entrance Porch, Lounge, kitchen, bedroom and bathroom.

The property also benefits from allocated parking X 1, communal garden, central heating & hot water system.

HOLDING FEE: £253.85

DEPOSIT REQUIRED: £1,269.25

LENGTH OF TENANCY: 12 MONTHS

COUNCIL TAX BAND B

Before contacting us to enquire, please make sure you have the following information available:

- WALK OF TRAIN STATION
- COMMUNAL GARDEN
- AVAILABLE NOW
- CENTRAL HEATING
- ONE BEDRM MAISONETTE
- ALLOCATED PARKING
- UNFURNISHED
- FIRST FLOOR

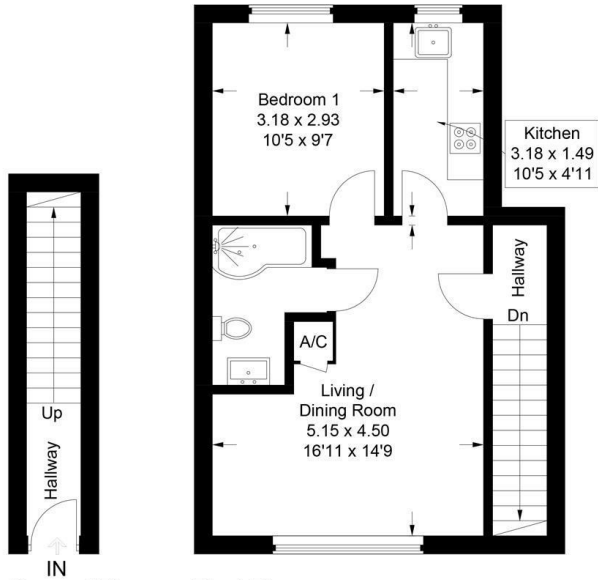


**8 Bowstridge Court Totteridge Road, High Wycombe, HP13 6HB**

Estate Agents ~ Lettings Agents ~ Valuers ~ Independent Mortgage Advisors



Approximate Gross Internal Area  
Ground Floor = 5.2 sq m / 56 sq ft  
First Floor = 43.6 sq m / 469 sq ft  
Total = 48.8 sq m / 525 sq ft



Ground Floor First Floor

This plan is for layout guidance only. Not drawn to scale unless stated. Windows and door openings are approximate. Whilst every care is taken in the preparation of this plan, please check all dimensions, shapes and compass bearings before making any decisions reliant upon them.  
© CJ Property Marketing Ltd Produced for Hurst

