



12a Pavilion Square, Scarborough YO11 2JN
£5,200 Per Annum

CPH
COMMERCIAL

12a Pavilion Square, Scarborough YO11 2JN

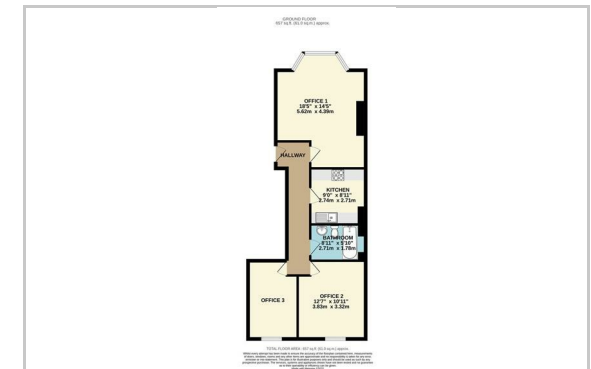
CPH Commercial are delighted to market these upper ground floor town centre office premises that will appeal to a host of occupiers. The premises are accessed up steps from Pavilion Square car park and are accessed via a communal hallway (shared with BDS - their offices for the surfaces and groundworking company). The premises benefit from 3 good sized offices together with a kitchen and bathroom. The unit is extends to a gross internal area of approximately 61 sq m (657 sq ft) and is available on a new commercial lease. All enquiries to CPH Commercial 01723 352235.



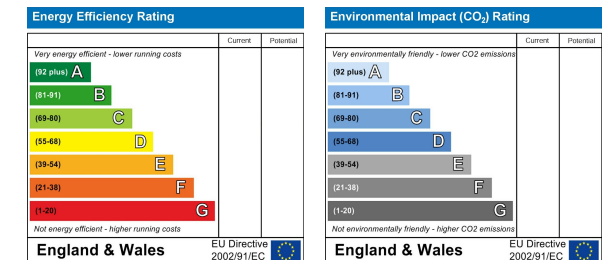
Area Map



Floor Plan



Energy Efficiency Graph



CPH Property Services
19 St.Thomas Street, Scarborough YO11 1DY
e.sales@cphproperty.co.uk | cphproperty.co.uk

NOTE: These particulars are intended only as a guide to prospective Purchasers to enable them to decide whether to make further enquiries with a view to taking up negotiations but they are otherwise not intended to be relied upon in any way for any purpose whatsoever and accordingly neither their accuracy nor the continued availability of the property is in any way guaranteed and they are furnished on the express understanding that neither the Agents nor the Vendors are to be or become under any liability or claim in respect of their contents. Any prospective Purchaser must satisfy himself by inspection or otherwise as to the correctness of the particulars contained. C132