



21 MALCOLM ROAD LONDON, SW19 4AS

£20,000 PCM

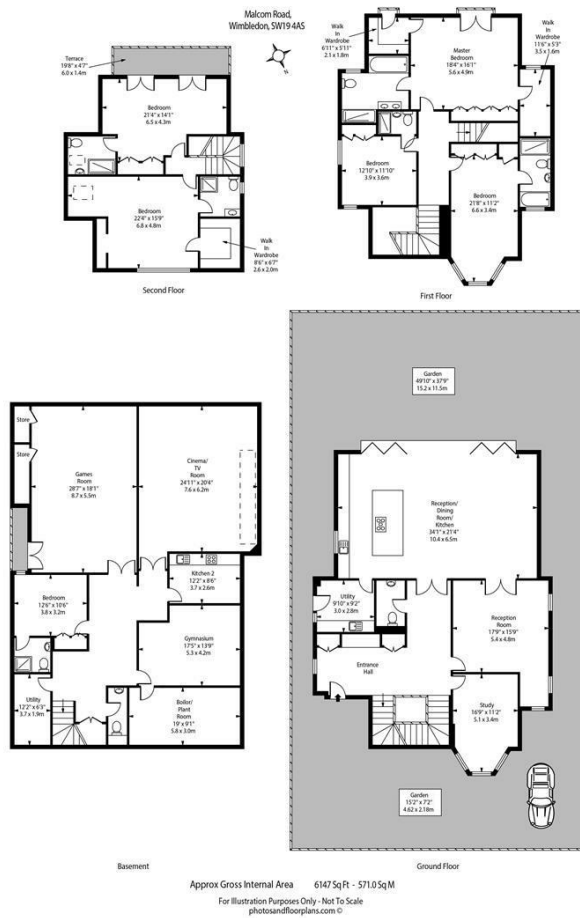
A simply STUNNING, LUXURIOUS six-bedroom house, enviably located very close to Wimbledon Village and Wimbledon Town. This BEAUTIFUL property has been finished to a VERY HIGH standard throughout and boasts six well-sized bedrooms, a separate study, a dressing room, five beautiful reception rooms, inclusive of a games room and gym, a LARGE open plan FITTED kitchen and dining/reception area leading into the BEAUTIFUL rear GARDEN. There is underfloor heating and air conditioning throughout the property. The property further benefits from a DRIVEWAY and OFF-STREET PARKING.

Wimbledon Village High Street offers an eclectic mix of shops, boutiques, restaurants, café's and wine bars is just a short walk as is Wimbledon Common which offers extensive walks, cycle routes, bridle paths and golf.

Other recreational facilities in the area include tennis, squash, golf and fitness clubs and riding stables. Several of the areas' best schools, including King's College School and Wimbledon High School, are within walking distance.



ELIZABETH WIGHTWICK
YOUR BESPOKE PROPERTY AGENT



| Energy Efficiency Rating | | |
|---|----------------------------|-----------|
| | Current | Potential |
| Very energy efficient - lower running costs | | |
| (92 plus) A | | |
| (81-91) B | | |
| (69-80) C | | |
| (55-68) D | | |
| (39-54) E | | |
| (21-38) F | | |
| (1-20) G | | |
| Not energy efficient - higher running costs | | |
| England & Wales | EU Directive 2002/91/EC | |

Agents Note: Whilst every care has been taken to prepare these particulars, they are for guidance purposes only. All measurements are approximate and are for general guidance purposes only and whilst every care has been taken to ensure their accuracy, they should not be relied upon and potential buyers/tenants are advised to recheck the measurements

Wimbledon Village
Unit 6 (2nd Floor)
2 Allington Close
Wimbledon Village
Wimbledon
London
KT3 3DN

020 3597 3484
info@elizabeth-wightwick.co.uk

