

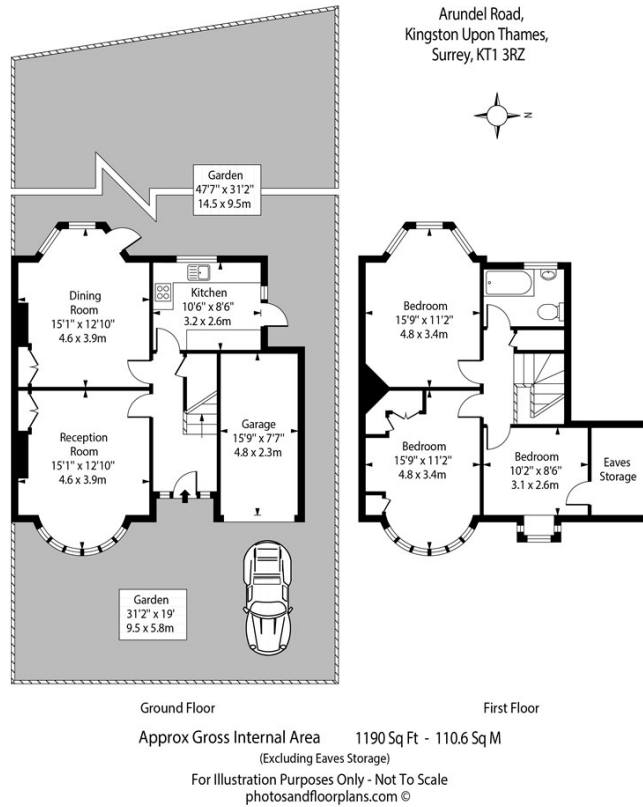


## 54 ARUNDEL ROAD KINGSTON UPON THAMES, KT1 3RZ

£2,995 PCM

Beautiful semi-detached unfurnished 3 bedroom house with garden and off street parking. Located in a calm residential area, 2 minutes walk from shops, restaurants, pharmacy, post office. Norbiton train station and Kingston Hospital within short walking distance. Available from 1st May.





| Energy Efficiency Rating                    |                            |           |
|---|----------------------------|-----------|
|   | Current                    | Potential |
| Very energy efficient - lower running costs |                            |           |
| (92 plus) <b>A</b>                          |                            |           |
| (81-91) <b>B</b>                            |                            |           |
| (69-80) <b>C</b>                            |                            |           |
| (55-68) <b>D</b>                            |                            |           |
| (39-54) <b>E</b>                            |                            |           |
| (21-38) <b>F</b>                            |                            |           |
| (1-20) <b>G</b>                             |                            |           |
| Not energy efficient - higher running costs |                            |           |
| <b>England &amp; Wales</b>                  | EU Directive<br>2002/91/EC |           |

Agents Note: Whilst every care has been taken to prepare these particulars, they are for guidance purposes only. All measurements are approximate and are for general guidance purposes only and whilst every care has been taken to ensure their accuracy, they should not be relied upon and potential buyers/tenants are advised to recheck the measurements

Wimbledon Village  
Unit 6 (2nd Floor)  
2 Allington Close  
Wimbledon Village  
Wimbledon  
London  
KT3 3DN

020 3597 3484  
info@elizabeth-wightwick.co.uk

