

7A COBHAM ROAD

KINGSTON UPON THAMES, KT1 3AE

£480,000
FREEHOLD

This superb CHAIN FREE two bedroom first floor maisonette located in CENTRAL Norbiton, Offering easy access to the River Thames and Kingston.

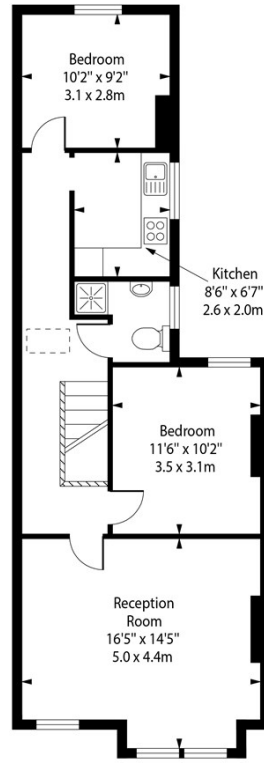
This accommodation on offer comprises of a PRIVATE entrance, two bedrooms, a spacious living room, kitchen and family bathroom. Norbiton Station is within WALKING distance and only a short walk from Kingston with all local amenities. Also in a great location for OUTSTANDING schools. Potential to EXTEND (STPP)



7A Cobham Road,
Kingston,
Surrey, KT1 3AE



Ground Floor
Entrance



First Floor

Approx Gross Internal Area 743 Sq Ft - 69.0 Sq M

For Illustration Purposes Only - Not To Scale
photosandfloorplans.com ©



Energy Efficiency Rating		
	Current	Potential
Very energy efficient - lower running costs		
(92 plus) A		
(81-91) B		
(69-80) C		
(55-68) D		
(39-54) E		
(21-38) F		
(1-20) G		
Not energy efficient - higher running costs		
England & Wales	EU Directive 2002/91/EC	

Agents Note: Whilst every care has been taken to prepare these particulars, they are for guidance purposes only. All measurements are approximate and are for general guidance purposes only and whilst every care has been taken to ensure their accuracy, they should not be relied upon and potential buyers/tenants are advised to recheck the measurements

Wimbledon Village
Unit 6 (2nd Floor)
2 Allington Close
Wimbledon Village
Wimbledon
London
KT3 3DN

020 3597 3484
info@elizabeth-wightwick.co.uk

