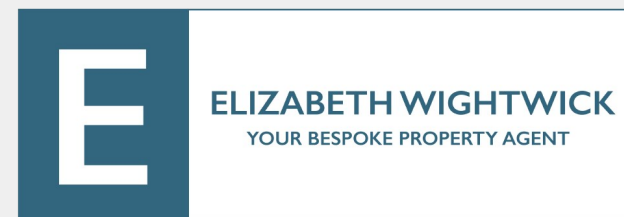
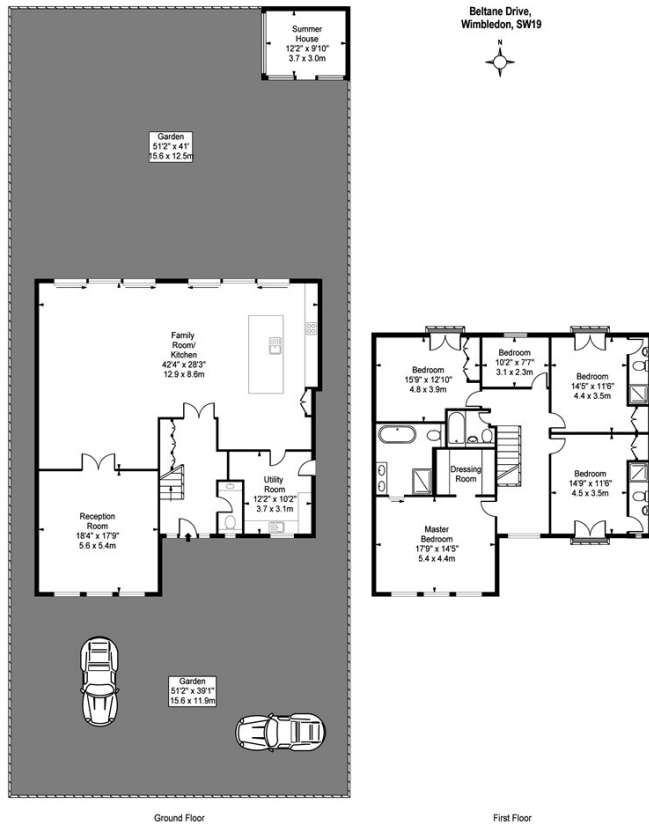


3 BELTANE DRIVE SW19 5JR

£14,000 PCM

This stunning five bedroom detached property is located close to Wimbledon Village and Wimbledon common. The property has been completely renovated throughout to the highest standard. The property comprises; a beautiful open plan kitchen/dining/living space with a lovely contemporary style, there is a further games room/ secondary living space for some quiet time as well as a large cloakroom/utility. Located in a quiet cul-de-sac off Wimbledon Parkside, the upstairs comprises five double bedrooms, three en-suites, a family bathroom, a further two guest bedrooms, off street parking for at least three cars and well landscaped garden with a built in studio. This breathtaking seven bedroom detached property is located close to Wimbledon Village and Wimbledon common. The gated property has been renovated to a high standard throughout. Located in a quiet cul-de-sac off Wimbledon Parkside, the property comprises seven double bedrooms, two bathrooms and three shower rooms, four reception room





Approx Gross Internal Area 3143 Sq Ft - 292.0 Sq M
 For Illustration Purposes Only - Not To Scale
 photosandfloorplans.com ©



Energy Efficiency Rating		
	Current	Potential
Very energy efficient - lower running costs		
(92 plus) A		
(81-91) B		
(69-80) C		
(55-68) D		
(39-54) E		
(21-38) F		
(1-20) G		
Not energy efficient - higher running costs		
England & Wales	EU Directive 2002/91/EC	

Agents Note: Whilst every care has been taken to prepare these particulars, they are for guidance purposes only. All measurements are approximate and are for general guidance purposes only and whilst every care has been taken to ensure their accuracy, they should not be relied upon and potential buyers/tenants are advised to recheck the measurements

Wimbledon Village
 Unit 6 (2nd Floor)
 2 Allington Close
 Wimbledon Village
 Wimbledon
 London
 KT3 3DN

020 3597 3484
 info@elizabeth-wightwick.co.uk

