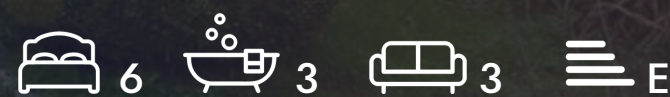




The Old Vicarage Church Street, Kilmersdon, BA3 5TA

£3,250 Per month





The Old Vicarage Church Street

Kilmersdon, BA3 5TA

- Grade II Listed
- 6 Bedrooms
- 3 Bathrooms
- Self Contained Ground Floor Studio
- Traditional Architecture
- 3 Reception Rooms
- Formal Gardens
- Detached Coach House

Nestled within the picturesque landscape of Somerset, England, The Old Vicarage stands as a testament to timeless elegance and historic charm. This Grade II Listed residence, graced with traditional architecture and enveloped by lush greenery, presents a rare opportunity to embrace the quintessential English countryside lifestyle.

Approached through wrought iron gates and flanked by an enchanting formal garden, complete with a tranquil water feature canal and meticulously trimmed box hedges, The Old Vicarage exudes an air of refinement from the moment one sets foot on its grounds.

Upon entry, the reception hall welcomes guests with its stone fireplace and rare medieval floor, setting the tone for the heritage and grace that permeate throughout the home. The spacious accommodation unfolds over two floors, offering a seamless flow of living spaces ideal for both intimate gatherings and grand entertaining.

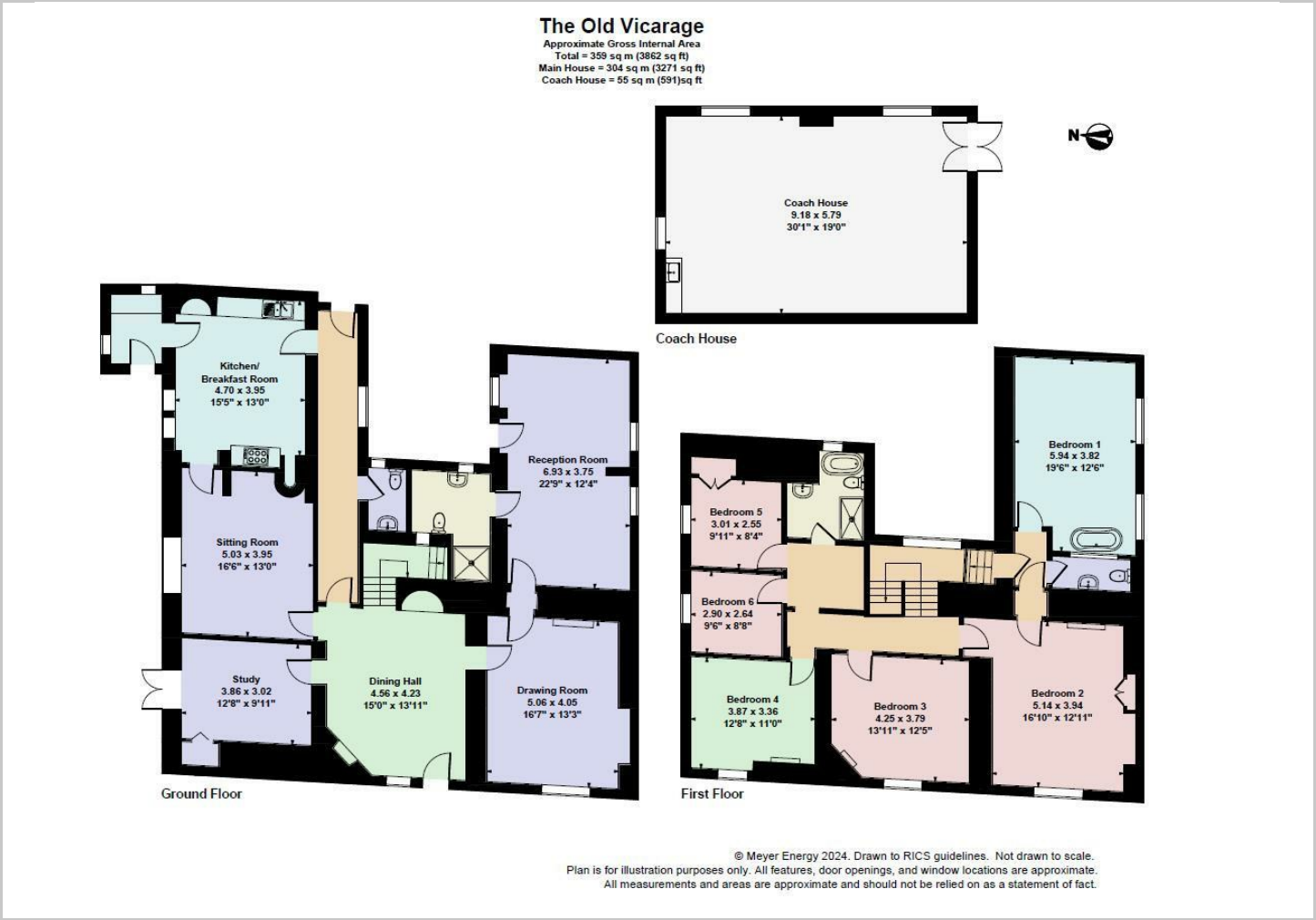
£3,250 Per month







Floor Plans



Viewing

Please contact our Rivendell Estates Office on 01373 489 888 if you wish to arrange a viewing appointment for this property or require further information.

The particulars are set out as a general outline only for the guidance of intended purchasers or lessees, and do not constitute, any part of a contract. Nothing in these particulars shall be deemed to be a statement that the property is in good structural condition or otherwise nor that any of the services, appliances, equipment or facilities are in good working order. Purchasers should satisfy themselves of this prior to purchasing.

Location Map



Energy Performance Graph

