

Bure Lane, Christchurch, BH23

Approximate Area = 1899 sq ft / 176.4 sq m

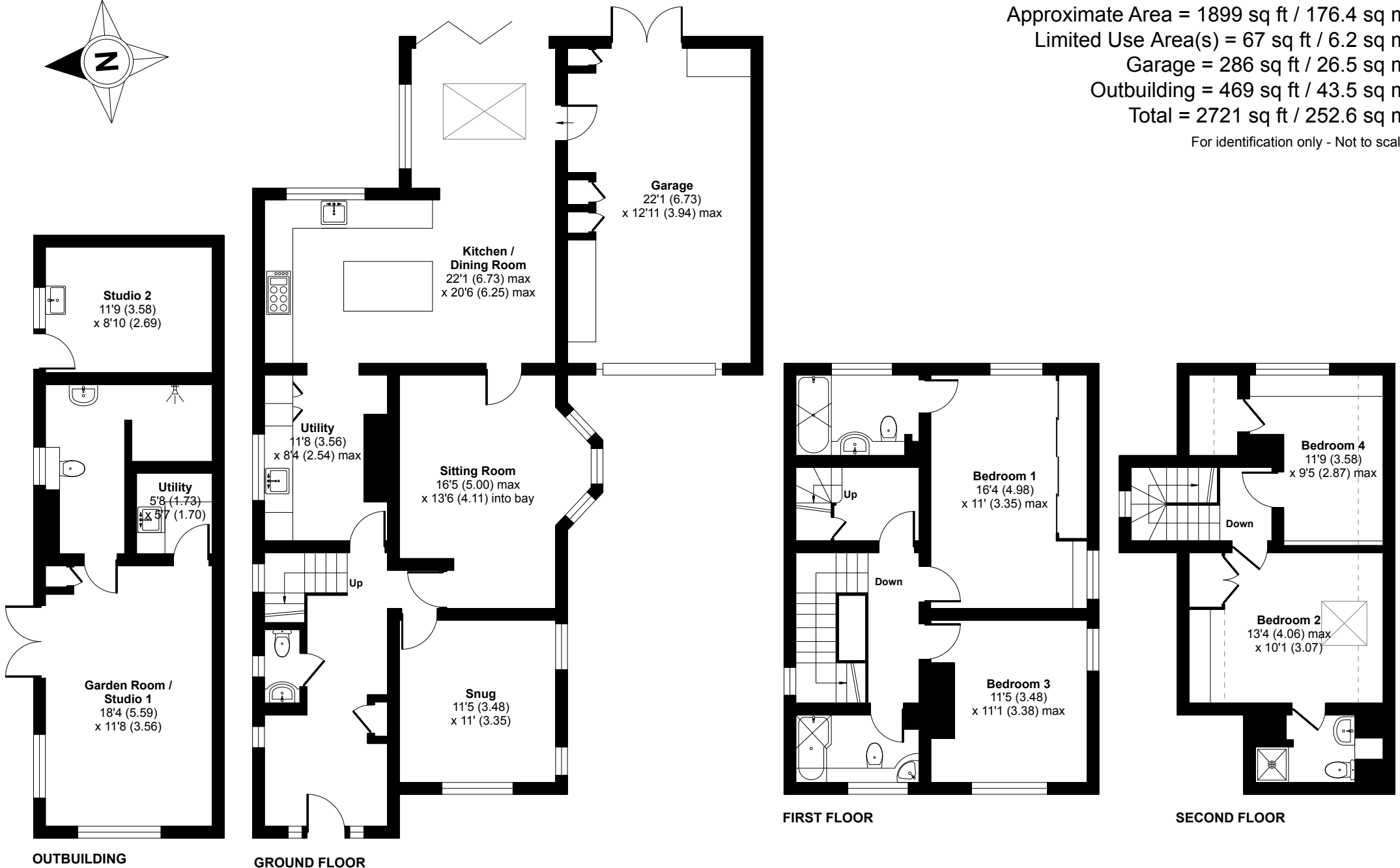
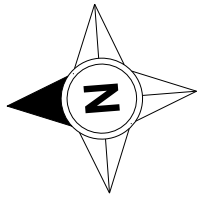
Limited Use Area(s) = 67 sq ft / 6.2 sq m

Garage = 286 sq ft / 26.5 sq m

Outbuilding = 469 sq ft / 43.5 sq m

Total = 2721 sq ft / 252.6 sq m

For identification only - Not to scale



Floor plan produced in accordance with RICS Property Measurement Standards incorporating International Property Measurement Standards (IPMS2 Residential). © n1che.com 2023. Produced for Hive and Partners Limited. REF: 956988

