

# Apartment No. 305

## 2 bedroom apartment

**Living Room/Kitchen**  
(a)4.5m x (b)7.6m 14'11" x 24'11"

**Master Bedroom**  
(a)3m x (b)3.4m 9'11" x 11'3"

**En-suite**

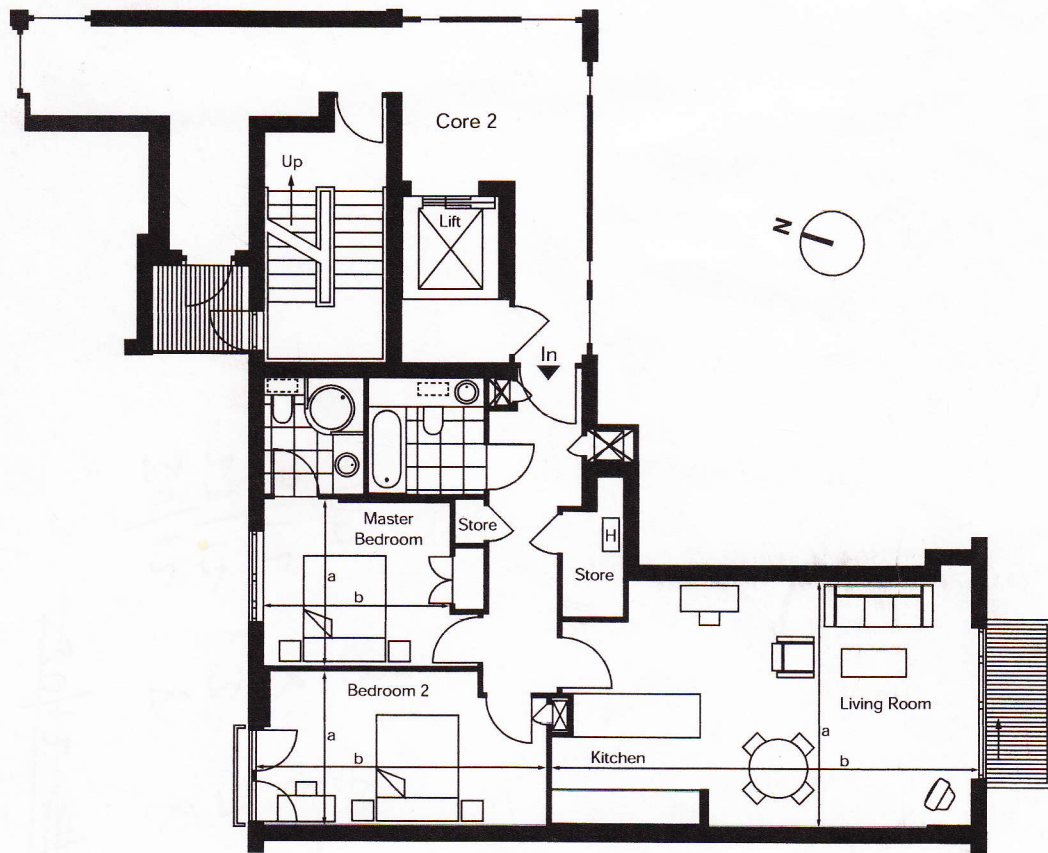
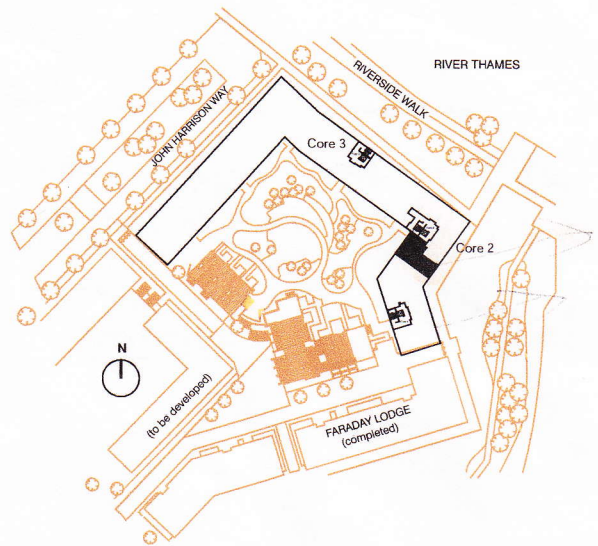
**Bedroom 2**  
(a)2.9m x (b)5.2m 9'5" x 17'0"

**Bathroom**

**BALCONY**  
3.2 sq. m 34 sq. ft

**INTERNAL AREA**  
84 sq. m 904 sq. ft

**TOTAL AREA**  
87.1 sq. m 938 sq. ft



Measurements are taken from and to respective walls which most fairly represent the average dimensions for that area, generally measuring the longer dimensions, e.g. with L-shaped rooms. In most cases "Living Room" dimensions includes the open plan kitchen area. Measurements have been taken from construction drawings which are subject to change. Final room sizes may vary. The Gross Internal Areas and dimensions are approximate only and are calculated generally in accordance with RICS Code of Measuring Practice (Fourth Edition) and have been calculated in metric units and converted to imperial where shown. The information within this document is believed to be accurate at the time of going to press (April 2002) but its accuracy cannot be guaranteed and no such information forms part of any contract. Neither the Vendors nor their Agents nor any person in their employ has any authority to make or give any representation or warranty or guarantee (whether written or oral) in respect of or in relation to the development (or parts thereof). The Vendor reserves the right to alter the specification design and layout without prior notice. Please consult your sales consultant for up to date information.