

bothams ¹⁸⁷¹

KINETIC
CHIROPRACTIC CLINIC

Wilkin
KITCHENS

gallery.gifts.café

seasons

290

292

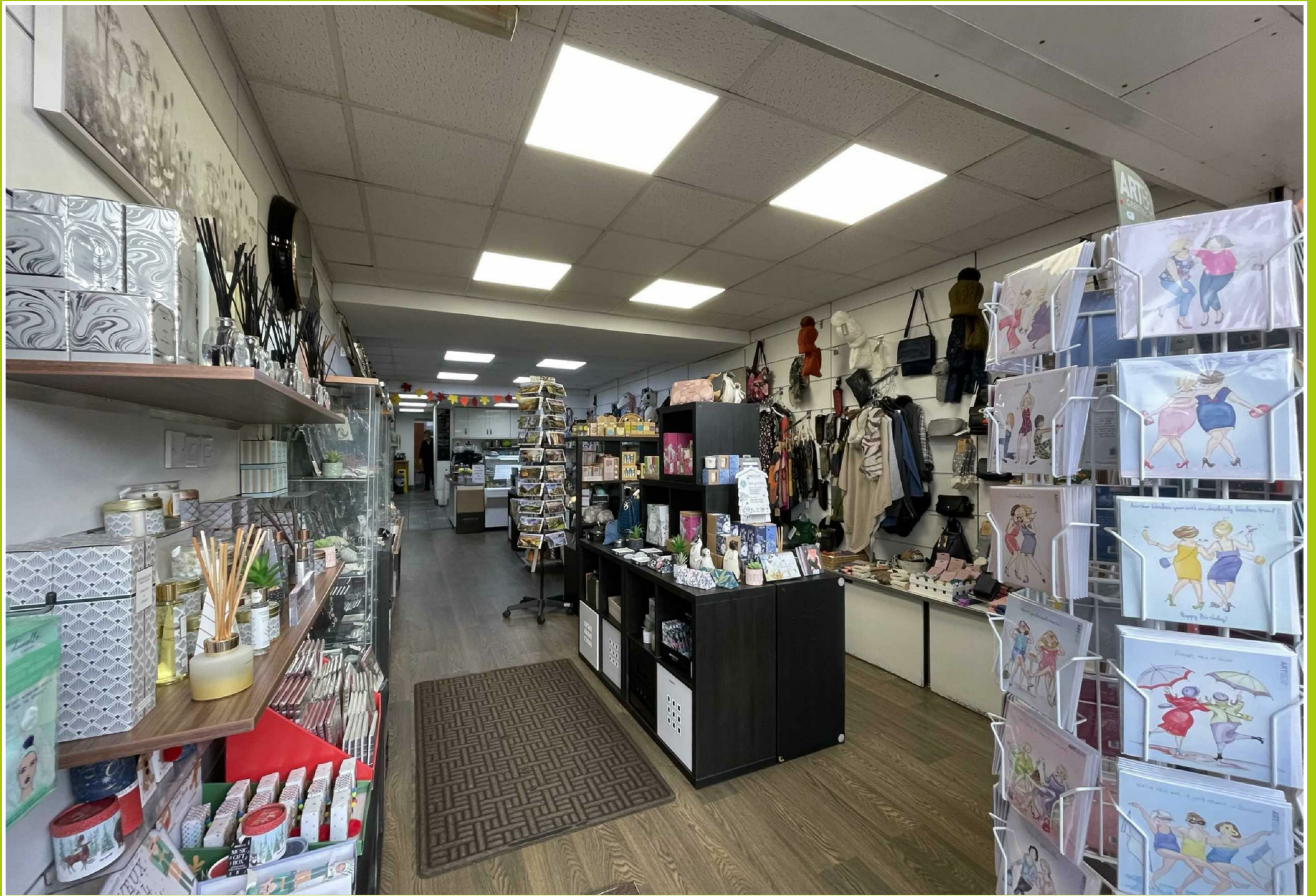
Monday - Saturday
10am - 5pm
Sunday
Closed



290 Abbeydale Road South, Sheffield, S17 3LP

Offers In The Region Of £30,000





290 Abbeydale Road South

Sheffield, S17 3LP

- Long established business with excellent potential for growth and expansion
- Fully equipped and stocked to operate immediately
- Beautifully appointed prime premises with outside seating to the rear
- Only available due to the owner's retirement, a viewing is essential to appreciate the opportunity on offer.

An opportunity to acquire this well-established café and high quality gift shop situated in a prominent position on the desirable Abbeydale Road South which has built up an excellent reputation with a large and loyal customer base coming from far and wide.



Location:

Description:

Business:

Premises:

Rating Assessment:

Viewing:



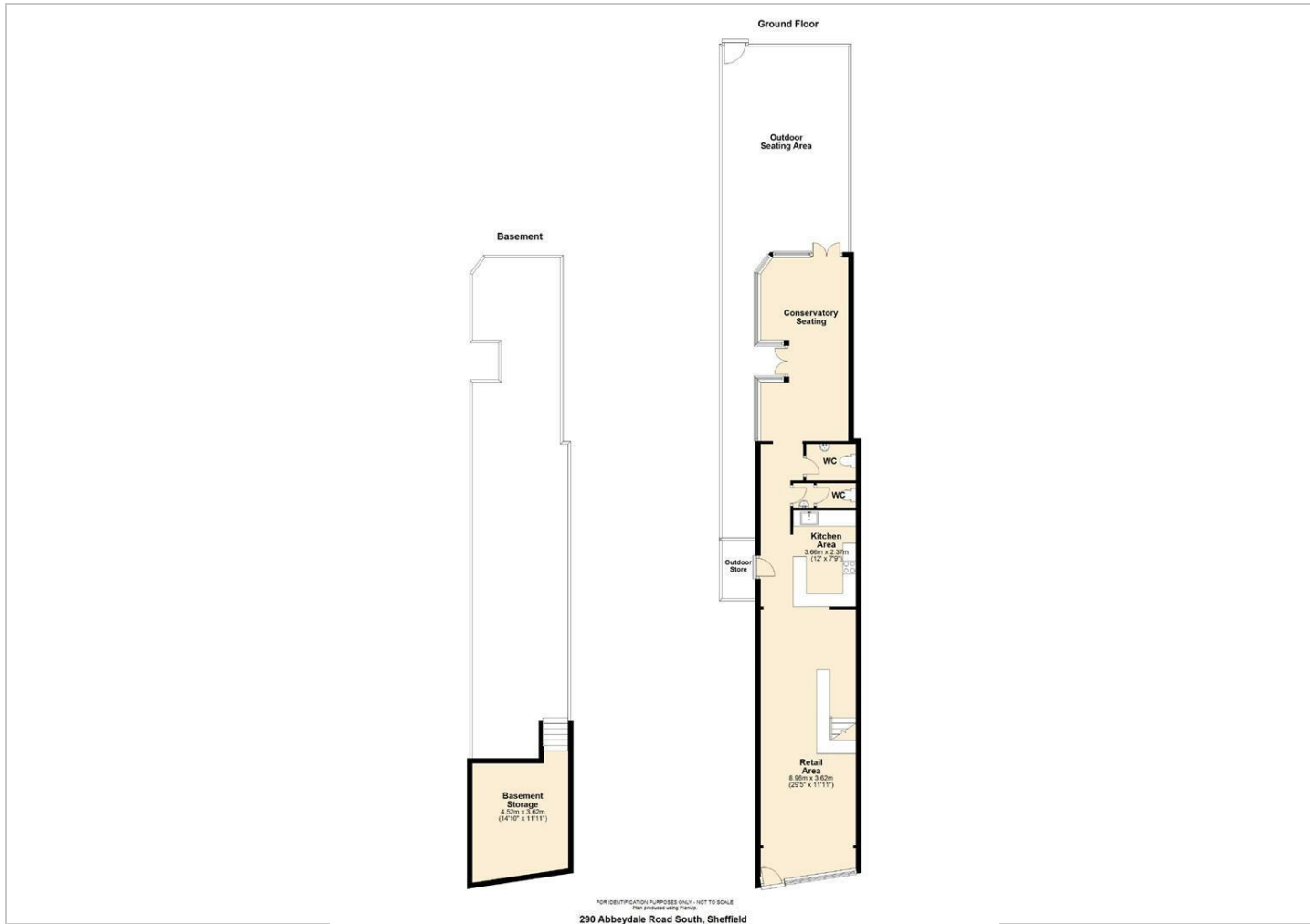


Directions

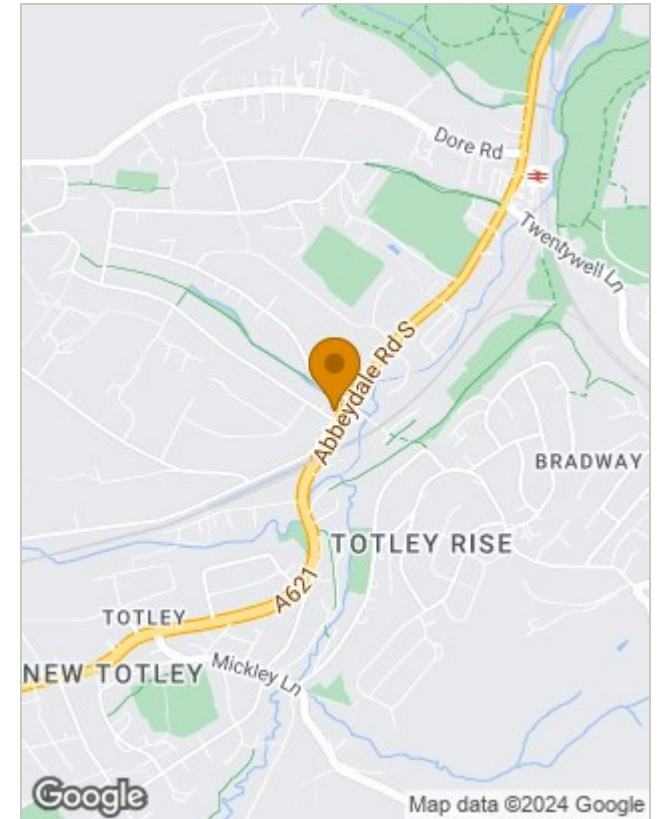




Floor Plans



Location Map



Energy Performance Graph

Energy Efficiency Rating		
	Current	Potential
Very energy efficient - lower running costs		
(92 plus) A		
(81-91) B		
(69-80) C		
(55-68) D		
(39-54) E		
(21-38) F		
(1-20) G		
Not energy efficient - higher running costs		
England & Wales	EU Directive 2002/91/EC	

Viewing

Please contact our Chesterfield Commercial Office on 01246 233121 if you wish to arrange a viewing appointment for this property or require further information.

The particulars are set out as a general outline only for the guidance of intended purchasers or lessees, and do not constitute, any part of a contract. Nothing in these particulars shall be deemed to be a statement that the property is in good structural condition or otherwise nor that any of the services, appliances, equipment or facilities are in good working order. Purchasers should satisfy themselves of this prior to purchasing.