

bothams ¹⁸⁷¹



2 Red Brick Close

Morton, Alfreton, DE55 6NH

Offers In Excess Of £495,000



2 Red Brick Close

Morton, Alfreton, DE55 6NH

A stunning four-bedroom detached family home situated in a desirable position on a private drive, finished to an exceptional specification internally with an enclosed south facing rear garden, ample off-street parking and an integral garage.

2 Red Brick Close

The Accommodation

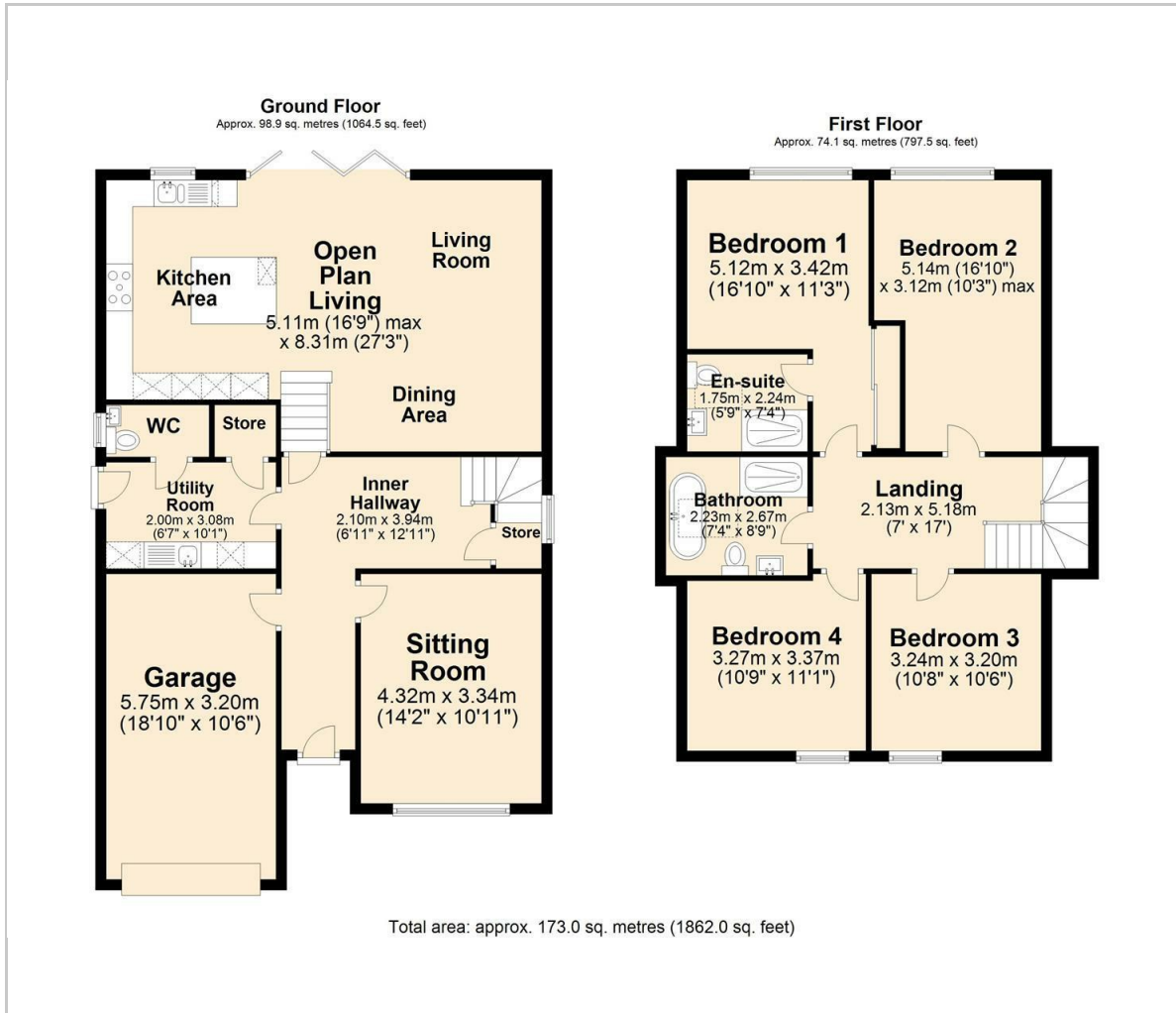
Outside

Material Information





Floor Plan



Viewing

Please contact our Chesterfield Residential Office on 01246 233121 if you wish to arrange a viewing appointment for this property or require further information.

These particulars, whilst believed to be accurate are set out as a general outline only for guidance and do not constitute any part of an offer or contract. Intending purchasers should not rely on them as statements of representation of fact, but must satisfy themselves by inspection or otherwise as to their accuracy. No person in this firm's employment has the authority to make or give any representation or warranty in respect of the property.

Ravenside House 46 Park Road, Chesterfield, Derbyshire, S40 1XZ
Tel: 01246 233121 Email: enquiries@bothams.co.uk <https://www.bothams.co.uk/>

Area Map



Energy Efficiency Graph

Energy Efficiency Rating		Current	Potential
Very energy efficient - lower running costs			
(92 plus)	A		
(81-91)	B		
(69-80)	C		
(55-68)	D		
(39-54)	E		
(21-38)	F		
(1-20)	G		
Not energy efficient - higher running costs			
England & Wales		EU Directive 2002/91/EC	