



4 Elm Tree Drive

Wingerworth, Chesterfield, S42 6QD

Offers In The Region Of £425,000





## 4 Elm Tree Drive

Wingerworth, Chesterfield, S42 6QD

Occupying a generous corner plot in a cul-de-sac position is this well-appointed three bedroom detached bungalow. The property is located within the sought after village of Wingerworth, being close to a range of local amenities and transport links. Offering fantastic living accommodation, the property briefly comprises; Entrance porch leading into the entrance hallway. A door giving access into a spacious living area with dual aspect windows to include a front bay window. Stone effect fireplace with electric fire and sliding doors leading to a formal dining area.

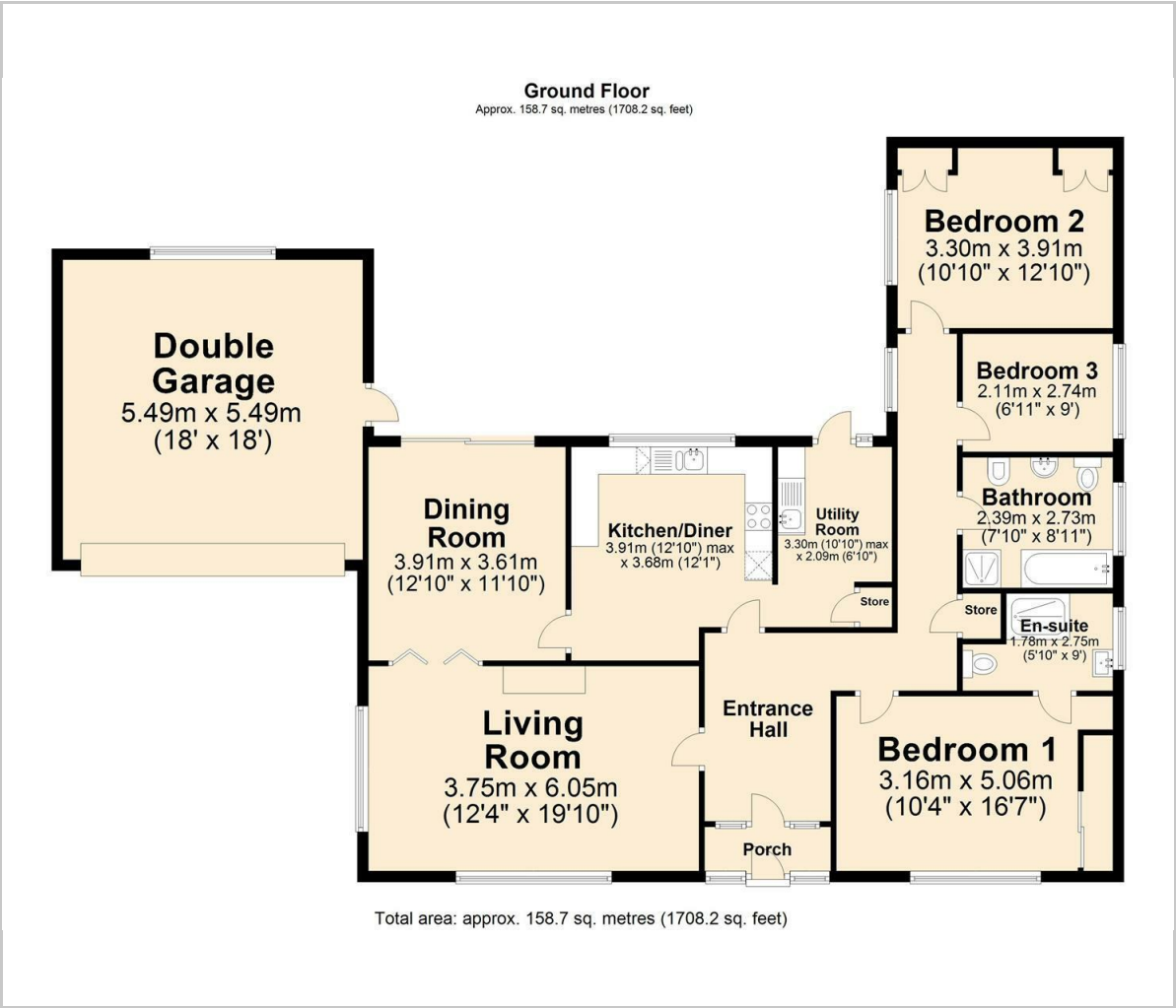
### Key information







Floor Plan



Viewing

Please contact our Chesterfield Residential Office on 01246 233121 if you wish to arrange a viewing appointment for this property or require further information.

These particulars, whilst believed to be accurate are set out as a general outline only for guidance and do not constitute any part of an offer or contract. Intending purchasers should not rely on them as statements of representation of fact, but must satisfy themselves by inspection or otherwise as to their accuracy. No person in this firms employment has the authority to make or give any representation or warranty in respect of the property.

Ravenside House 46 Park Road, Chesterfield, Derbyshire, S40 1XZ  
Tel: 01246 233121 Email: [enquiries@bothams.co.uk](mailto:enquiries@bothams.co.uk) <https://www.bothams.co.uk/>

Area Map



Energy Efficiency Graph

