



The Hayloft Lady Gate

, Diseworth, DE74 2QF

£500,000



The Hayloft Lady Gate

, Diseworth, DE74 2QF

£500,000



Property and Village

Charming and distinctive, Marble Property Services are delighted to offer this Two Bedroom character filled Barn Conversion to the market. The property benefits from being ideally located for local amenities and countryside walks.

Accommodation includes Entrance Hall with Guest Cloakroom, beamed Sitting Room, modern Dining/Living Kitchen, two Bedrooms both with En-Suite facilities. Landscaped Gardens and off road parking.

Contact us for viewing arrangements!

Accommodation

Lower Floor

Entrance and Hallway

With solid oak front door, limestone flag flooring, underfloor heating and oak spindle rail stairs leading to the first floor.

Cloakroom

With white suite comprising of WC, wash hand basin with bespoke under storage, sliding doors for washer/drier and airing cupboard housing hot water cylinder.

Study

9 x 6'3 (2.74m x 1.91m)

With uPVC double glazed window to the rear elevation, limestone flag flooring and under floor heating.

Lounge

15'4 x 10'2 (4.67m x 3.10m)

With double glazed window to the front elevation, limestone flag flooring and underfloor heating.

Kitchen/Living

20'1 x 15'10 (6.12m x 4.83m)

With uPVC window to the front elevation and bi folding doors the rear garden,. This bespoke hand finished kitchen has a range of wall and base units, finished with quartz worktops to include a breakfast bar, Belfast style sink with mixer taps and matching quartz up stand. Built in Neff hide and slide electric oven, five ring Neff hob, wine cooler , all built in appliance and under floor heating.

First Floor

Landing

With two large shelved double storage cupboards, turn stairs to the landing with heavy exposed beams and under floor heating.

Bedroom One

20' x 15'10 (6.10m x 4.83m)

With uPVC double glazed door leading to a Juliet Balcony , exposed beams, space for wardrobes and under floor heating.

En-suite

With wall and floor porcelain tiles, W.C, wash hand basin built into a bespoke under storage unit, stylish shaped bath with central taps and enclosed shower with glass door, display recess, hand held and drench shower and heated towel rail.

Bedroom Two

15'10 x 10'2 (4.83m x 3.10m)

With built in wardrobes/dressing area, Exposed beams to the walls, ceiling spotlights and under floor heating

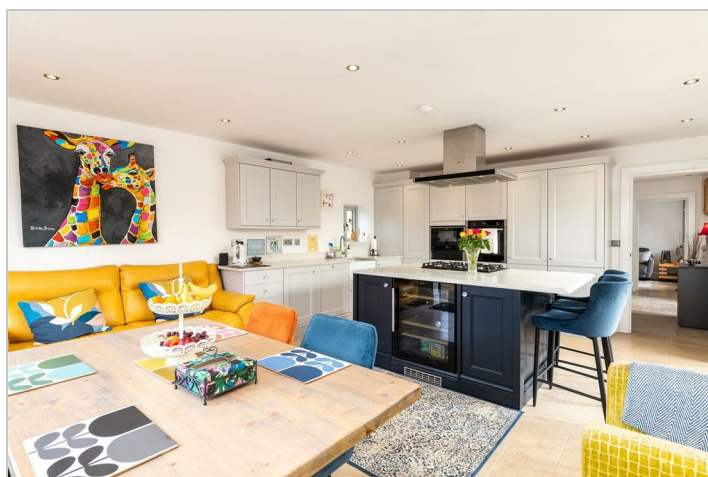
En-Suite Shower room

15'10 x 10'2 (4.83m x 3.10m)

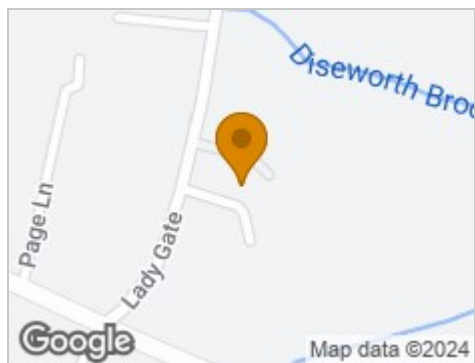
With walk in shower, WC, wash hand basin with built in vanity unit and heated towel rail.

Outside

To the front of the property is a garden, paved path, blue block paved parking for two cars and outside lighting. There is an electric car charger, sliding oak screen to the front window and access to the rear garden via side access with a raised paved terrace from the kitchen/living area and a lawned garden.



Road Map



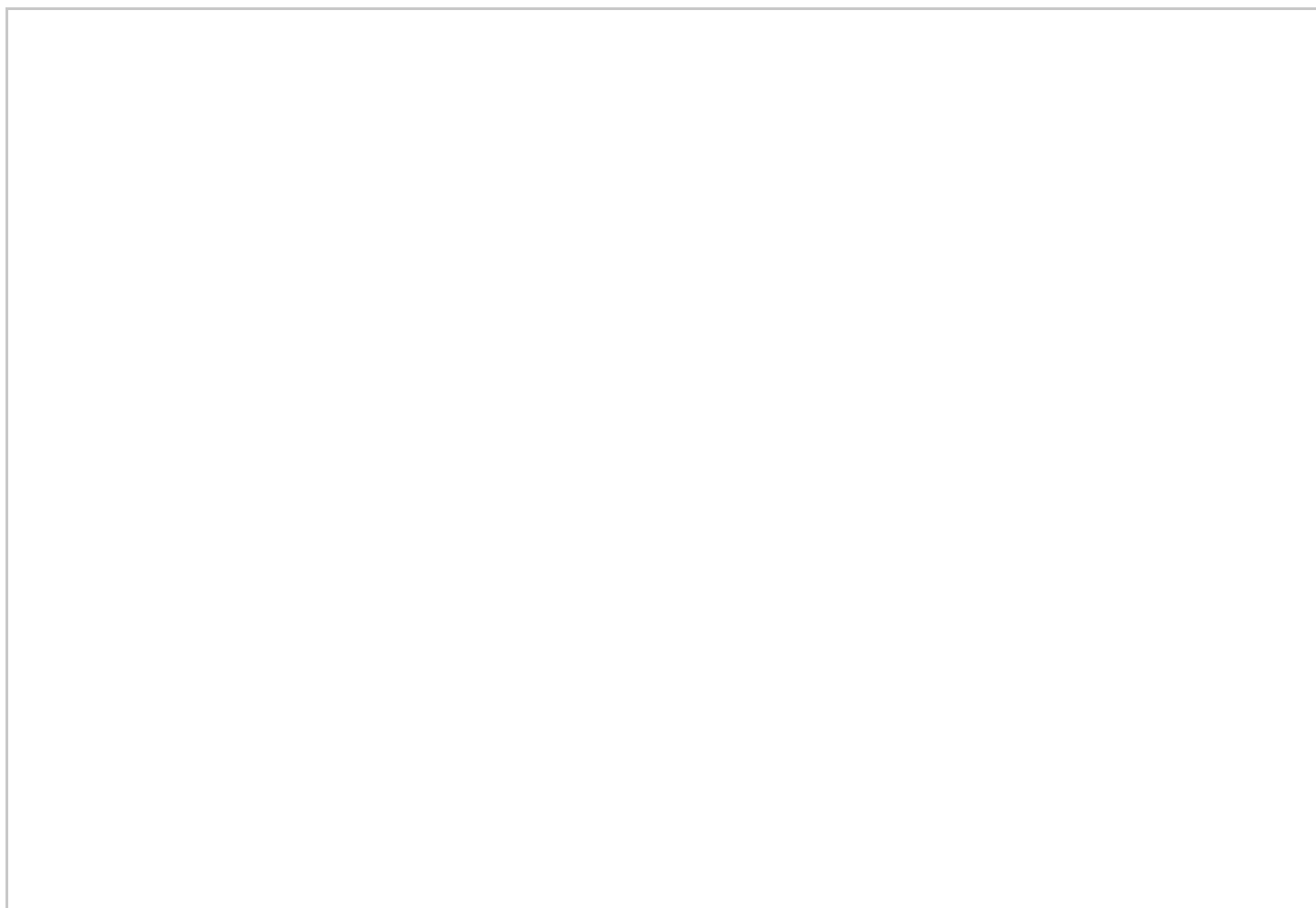
Hybrid Map



Terrain Map



Floor Plan



Viewing

Please contact our Marble Property Services Office on 01332 811333 if you wish to arrange a viewing appointment for this property or require further information.

These particulars, whilst believed to be accurate are set out as a general outline only for guidance and do not constitute any part of an offer or contract. Intending purchasers should not rely on them as statements of representation of fact, but must satisfy themselves by inspection or otherwise as to their accuracy. No person in this firm's employment has the authority to make or give any representation or warranty in respect of the property.