



£75,000

Sleaford Road, Tattershall, Lincoln LN4 4JG



2017 modern park home complete with hot tub. In brief the uPVC double glazed accommodation comprises an open plan kitchen living dining space with modern kitchen and bi-folding doors. There is an integrated slimline dishwasher, double fitted oven, freestanding fridge freezer, extractor, fitted microwave and five ring gas hob. There are two double bedrooms with an en-suite to the master bedroom along with a feature freestanding bath! Outside is a parking space and composite decking to the front and side incorporating the sunken hot tub. Tattershall Lakes is a beautiful location with a wide variety of facilities to include various eateries, swimming pools, water-sports, arcade and more!

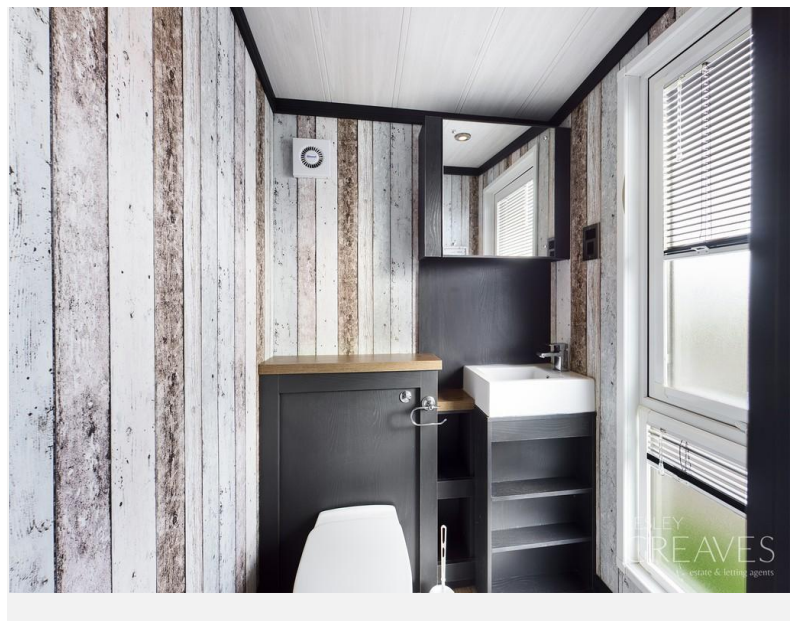
This property would make an ideal retreat as well as a subletting investment. More information can be found at;

<https://www.awayresorts.co.uk/holiday-homes/ownership-guide/>

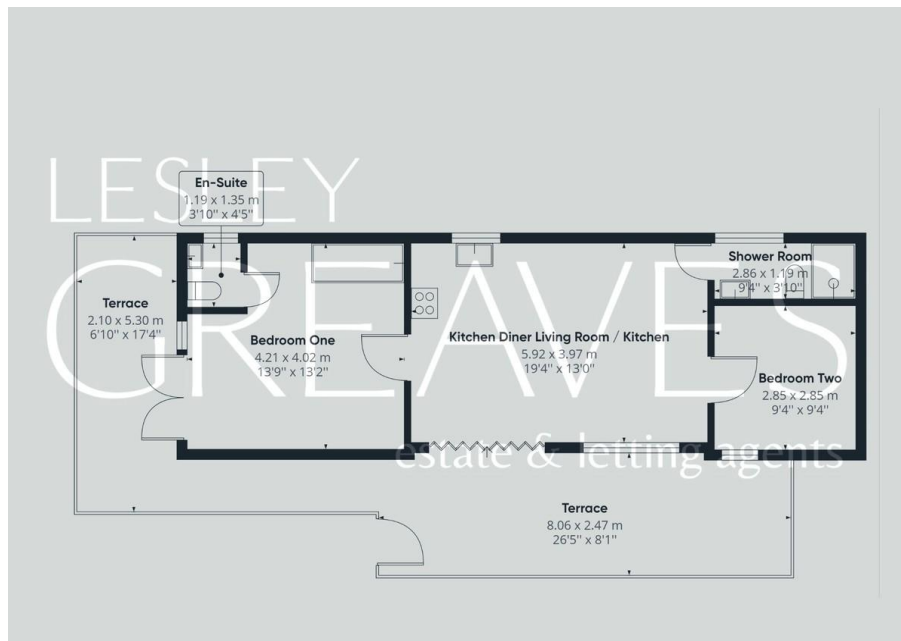
2023 Site fees pro rata £6721.71
Rates pro rata April-April £304
Optional Hot tub supplement to be paid annually

Price stated excludes the 15% plus VAT sale commission to site

*Any perspective purchaser must confirm that any figures quoted are correct/up to date before purchase



=



LOCAL AUTHORITY: East Lindsey District Council

20 Main Road
Gedling
Nottingham
NG4 3HP

Contact Us
www.lesleygreaves.co.uk
sales@lesleygreaves.co.uk
0115 987 7337

Agents Note: Whilst every care has been taken to prepare these particulars, they are for guidance purposes only. All measurements are approximate and are for general guidance purposes only and whilst every care has been taken to ensure their accuracy, they should not be relied upon and potential buyers/tenants are advised to recheck the measurements.

Company Registration Number: 5773186 | VAT Number: 917862296

