

Unit 801

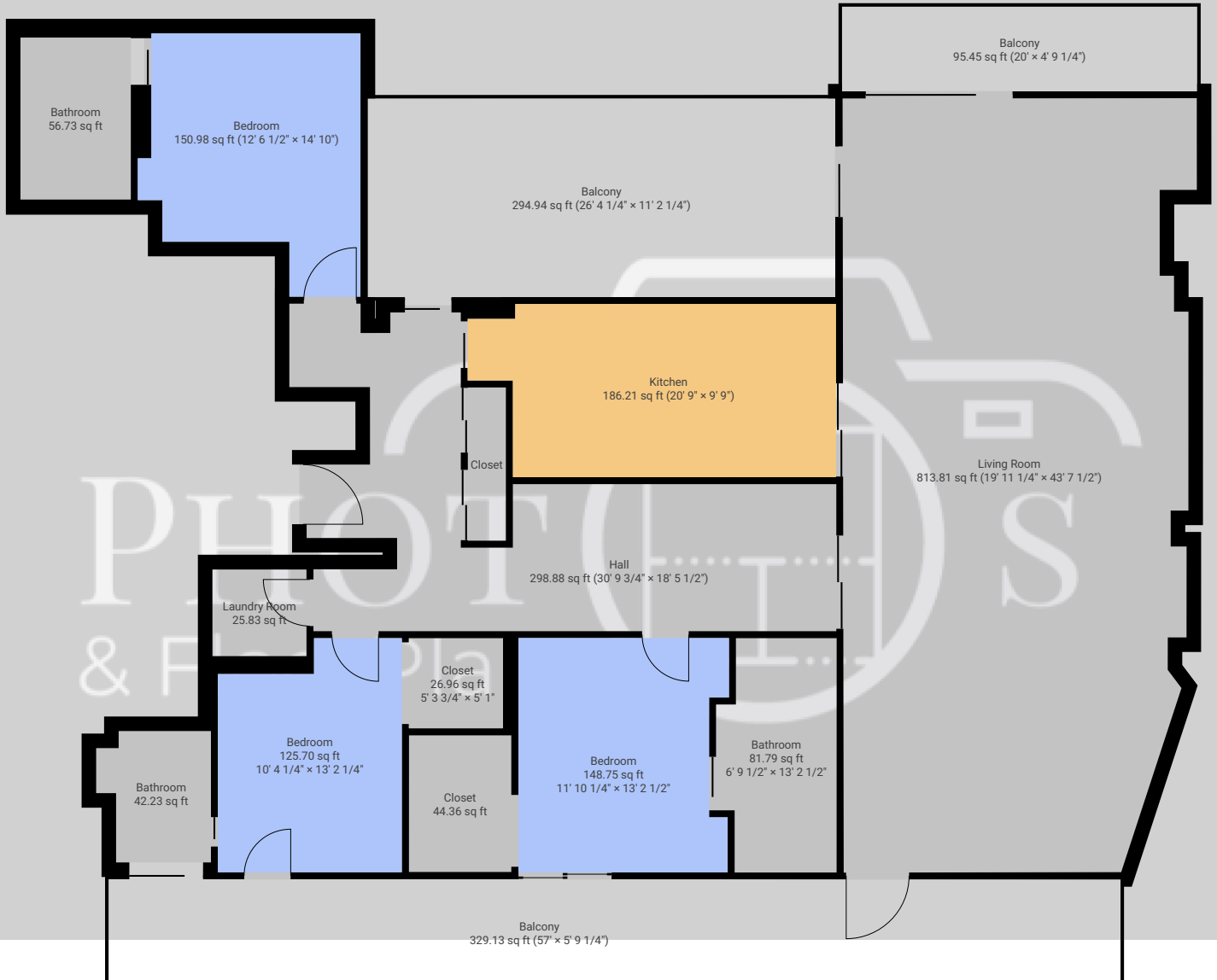


801, 3 Wood Crescent, W12 7GS London, England, United Kingdom
TOTAL AREA: 3023.44 sq ft • LIVING AREA: 2352.02 sq ft • FLOORS: 1 • ROOMS: 13

SUBMITTED BY Photos andfloorplan.com
info@estatephotoshoot.com

▼ Ground Floor

TOTAL AREA: 3023.44 sq ft • LIVING AREA: 2352.02 sq ft • ROOMS: 13



THIS FLOORPLAN IS PROVIDED WITHOUT WARRANTY OF ANY KIND. SENSOPIA DISCLAIMS ANY WARRANTY INCLUDING, WITHOUT LIMITATION, SATISFACTORY QUALITY OR ACCURACY OF DIMENSIONS.



1:111

Page 1/1