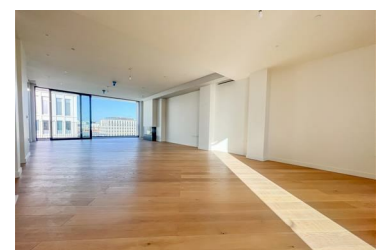
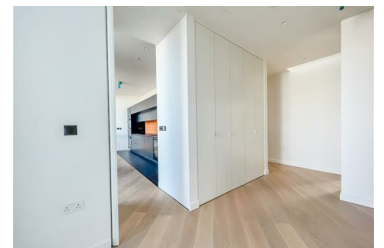




801 3 Wood Crescent, London, W12 7GS

Asking price £4,300,000



- White City Station (approximately 0.1 mile, Central line), Wood Lane (approximately 0.1 mile, Hammersmith & City and Circle lines) and Shepherds Bush (approximately 0.6 miles)
- Pool and gym facilities (Soho House)
- Underground car parking space
- 24 hour concierge
- 360 balcony
- Private cinema