



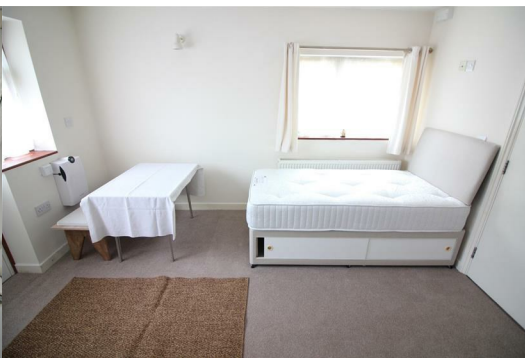
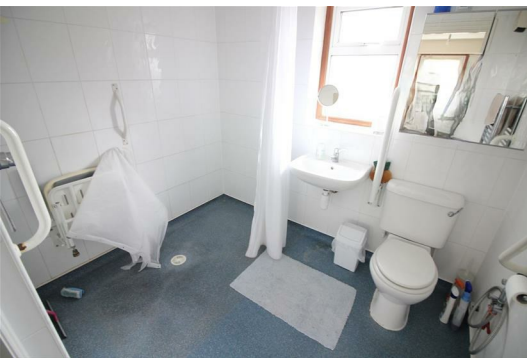
## Studio, 2 Magdala Road

Isleworth, TW7 7DD

**£700 Per month**



\*Including All Bills\* Spacious, modern, newly redecorated, self contained studio flat in Isleworth, situated on a quiet residential street, suitable for a single person only. Free parking, long term let, fully furnished, private kitchen & bathroom, close to shops and transport links. Ready to view now.



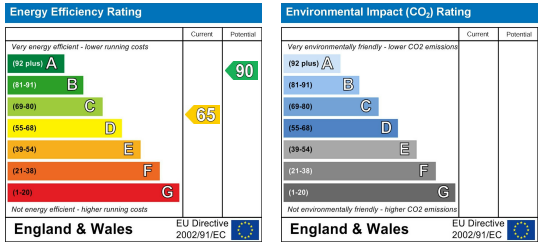
## Area Map



## Floor Plans



## Energy Efficiency Graph



These particulars, whilst believed to be accurate are set out as a general outline only for guidance and do not constitute any part of an offer or contract. Intending purchasers should not rely on them as statements of representation of fact, but must satisfy themselves by inspection or otherwise as to their accuracy. No person in this firm's employment has the authority to make or give any representation or warranty in respect of the property.