



20 The Link

, Enfield, EN3 5HU

Asking Price £580,000

PLANNING PERMISSION GRANTED TO CONVERT TO TWO FLATS. Our agents are delighted to present this immaculate semi-detached property, beautifully renovated throughout to an exceptional standard. This remarkable residence is currently listed for sale and is ideally situated in the lovely area of Enfield Brimsdown. Boasting an array of Benefits to include Off Street Parking, Three Reception Rooms, Four Bathrooms/Wash Rooms, Four Double Bedrooms, Utility Room and Conservatory and many more features which need to be seen in person to be appreciated. Ideal family home and almost 1500sqft of Living Space!

Enfield Council has already granted planning permission to convert this property into two flats, subject to conditions. Boasting four spacious bedrooms and four well-appointed bathrooms, this property provides ample living space for families or professional sharers. The property benefits from a modern kitchen, dining and separate utility room, perfect for those who enjoy cooking and entertaining. Additionally, three generously proportioned reception rooms offer versatile spaces for relaxation or socialising.

One of the key selling points of this property is its excellent spacious bedrooms, with all four being doubles and renovated just like the rest of the home to the highest standards, with an EPC rating of E and a council tax band of C, further enhancing its appeal to potential buyers, whether it is for a family home or as an investment property.

This stunning home is located within walking distance to Enfield Brimsdown station, making it an excellent choice for commuters. The property is also ideally located close to a number of local amenities, including schools, shops, and

Viewing

Please contact our Cottage Fields Office on 020 3621 8621 if you wish to arrange a viewing appointment for this property or require further information.



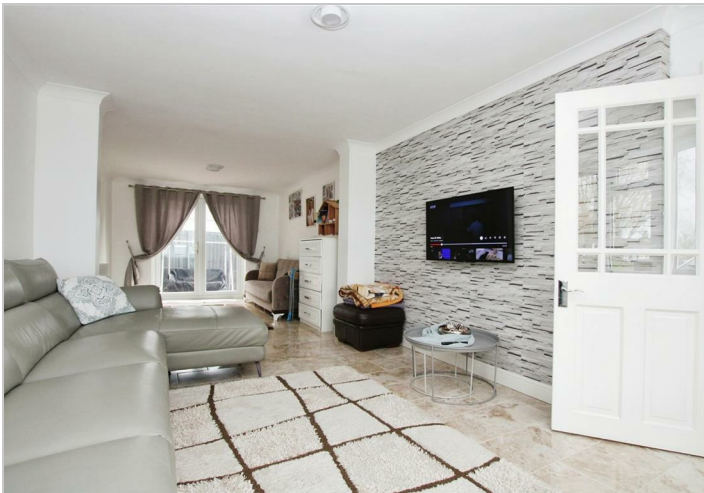
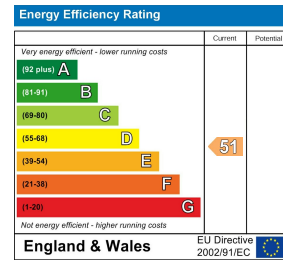
Floor Plan



Area Map



Energy Efficiency Graph



These particulars, whilst believed to be accurate are set out as a general outline only for guidance and do not constitute any part of an offer or contract. Intending purchasers should not rely on them as statements of representation of fact, but must satisfy themselves by inspection or otherwise as to their accuracy. No person in this firm's employment has the authority to make or give any representation or warranty in respect of the property.