



Flat 6, 23, Maytree Court Camlet Way , Barnet, EN4 0LH £2,100

Welcome to Maytree Court, where contemporary elegance meets unparalleled convenience. This newly constructed 1-bedroom flat embodies sophistication and comfort, showcasing pristine condition and meticulous attention to detail. Step into the inviting open-plan kitchen, equipped with modern appliances and ample counter space, perfect for culinary enthusiasts and casual dining alike. The adjacent living area bathes in natural light, offering a spacious retreat for relaxation and entertainment.

Unwind in the expansive bedroom, featuring tasteful decor and generous proportions, providing a serene escape from the bustle of everyday life. With its own designated parking spot, navigating through this desirable locale is effortless, ensuring seamless commuting and errand runs. Located in a prime area, Maytree Court offers easy access to a plethora of amenities and attractions, making it the ideal place to call home. Embrace the epitome of modern living at Maytree Court - where luxury, convenience and style converge to create the perfect urban retreat.

Viewing

Please contact our Cottage Fields Office on 020 3621 8621 if you wish to arrange a viewing appointment for this property or require further information.



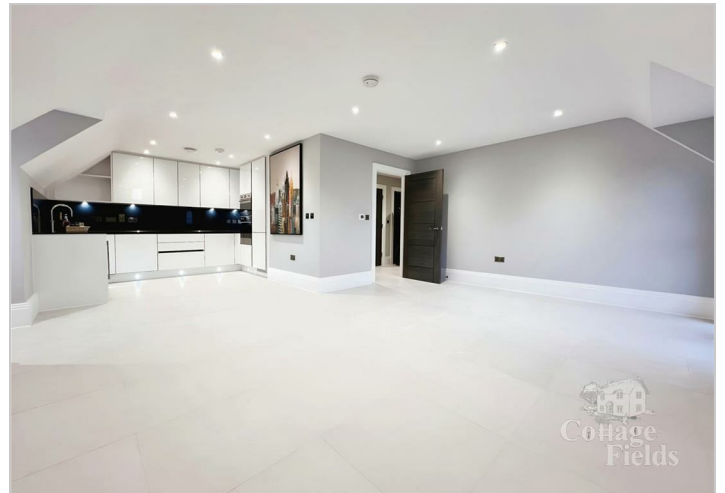
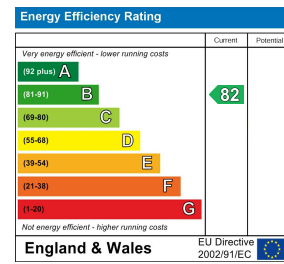
Floor Plan



Area Map



Energy Efficiency Graph



These particulars, whilst believed to be accurate are set out as a general outline only for guidance and do not constitute any part of an offer or contract. Intending purchasers should not rely on them as statements of representation of fact, but must satisfy themselves by inspection or otherwise as to their accuracy. No person in this firm's employment has the authority to make or give any representation or warranty in respect of the property.

135 Lancaster Road, Enfield, EN2 0JN

Tel: 020 3621 8621 Email: sales@cottagefields.co.uk