



8A Savoy Parade, Southbury Road , Enfield, EN1 1RT

£2,000

Cottage Fields presents an exquisite opportunity on Southbury Road: a meticulously maintained three-bedroom first-floor flat boasting immaculate condition and a prime location. From the moment you step inside, you'll be greeted by a sense of warmth and sophistication, thanks to the well-appointed interiors and abundance of natural light. Each of the generously sized double bedrooms offers a tranquil retreat, ensuring ample space for residents to unwind and recharge in comfort.

This move-in-ready residence is perfectly positioned to provide easy access to a plethora of local amenities, including shops, eateries, and transport links, ensuring convenience at every turn. Whether you're seeking a cozy evening at home or an adventure in the bustling city center, this flat offers the perfect blend of modern comfort and urban accessibility. Don't miss the opportunity to make this immaculate property your new home sweet home.

Viewing

Please contact our Cottage Fields Office on 020 3621 8621 if you wish to arrange a viewing appointment for this property or require further information.



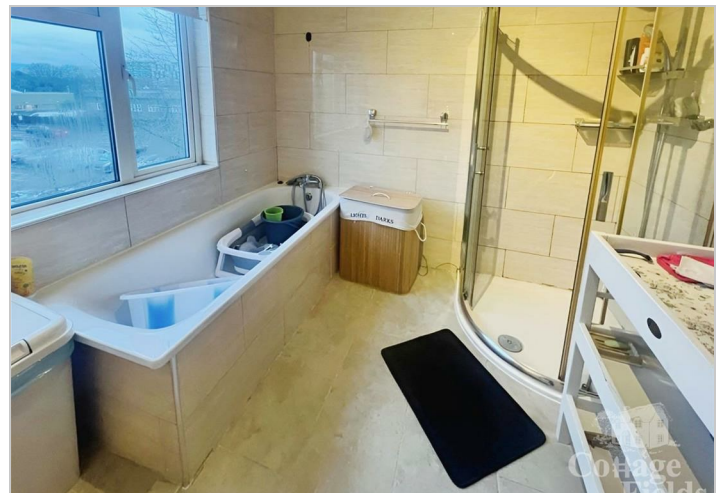
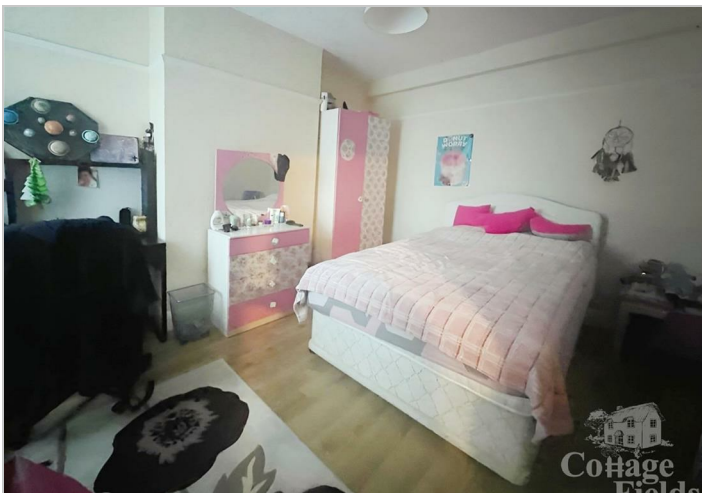
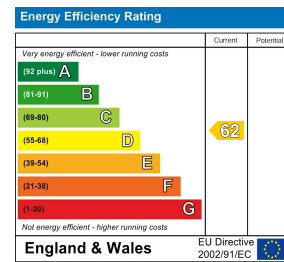
Floor Plan



Area Map



Energy Efficiency Graph



These particulars, whilst believed to be accurate are set out as a general outline only for guidance and do not constitute any part of an offer or contract. Intending purchasers should not rely on them as statements of representation of fact, but must satisfy themselves by inspection or otherwise as to their accuracy. No person in this firm's employment has the authority to make or give any representation or warranty in respect of the property.