



23a Hoecroft Court, Hoe Lane

, Enfield, EN3 5SJ

£1,600

Cottage Fields are proud to present this lovely 2 bedroom top floor flat, ideally located in the heart of Enfield Wash and less than a 5 minute drive away from Turkey Street train station with direct links to Central London. The property also presents convenient access to both the A10 and the M25. The property offers a spacious living room space, two double bedrooms, and a bathroom suite.

- Short drive to closest station
- Two Double Bedrooms

Viewing

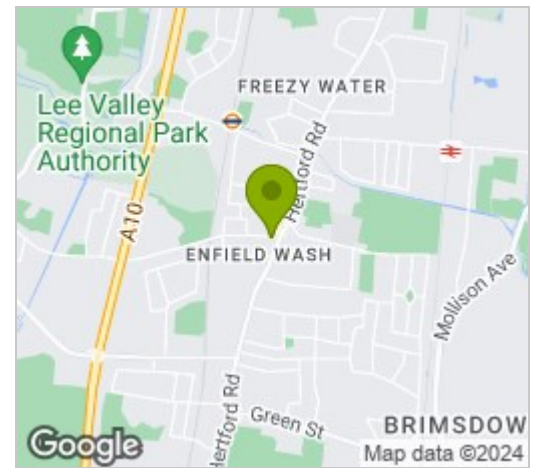
Please contact our Cottage Fields Office on 020 3621 8621 if you wish to arrange a viewing appointment for this property or require further information



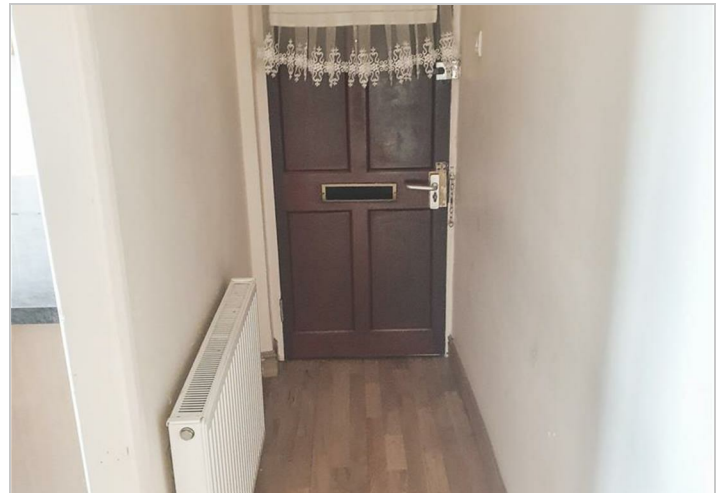
Floor Plan



Area Map



Energy Efficiency Graph



These particulars, whilst believed to be accurate are set out as a general outline only for guidance and do not constitute any part of an offer or contract. Intending purchasers should not rely on them as statements of representation of fact, but must satisfy themselves by inspection or otherwise as to their accuracy. No person in this firm's employment has the authority to make or give any representation or warranty in respect of the property.