



7 Pymmes Close

, London, N13 4NJ

£1,800

Introducing a charming ground floor flat designed for comfort and convenience. This delightful property boasts a private garden, a serene haven to unwind and entertain in the open air. Step into a welcoming space adorned with two generously sized double bedrooms, providing ample room for relaxation and rest.

Situated in a desirable location, this residence offers the convenience of on-street parking, ensuring hassle-free accessibility for you and your guests. Embrace the allure of the neighborhood, as this flat is nestled within close proximity to an array of fantastic local amenities, making daily living effortless and enjoyable.

Experience the perfect blend of tranquility and accessibility in this two-bedroom ground floor flat, where comfort, private garden retreat, and convenience harmoniously come together.

Viewing

Please contact our Cottage Fields Office on 020 3621 8621 if you wish to arrange a viewing appointment for this property or require further information.

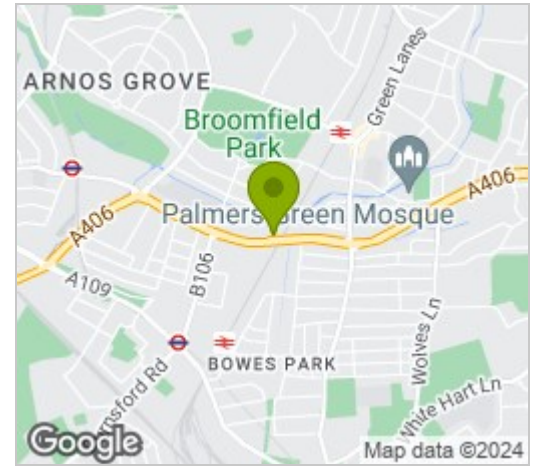


Cottage

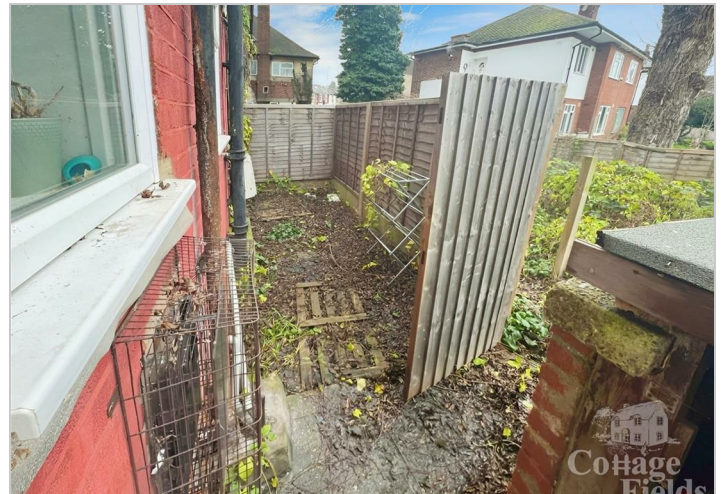
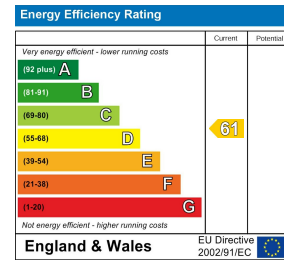
Floor Plan



Area Map



Energy Efficiency Graph



These particulars, whilst believed to be accurate are set out as a general outline only for guidance and do not constitute any part of an offer or contract. Intending purchasers should not rely on them as statements of representation of fact, but must satisfy themselves by inspection or otherwise as to their accuracy. No person in this firm's employment has the authority to make or give any representation or warranty in respect of the property.