



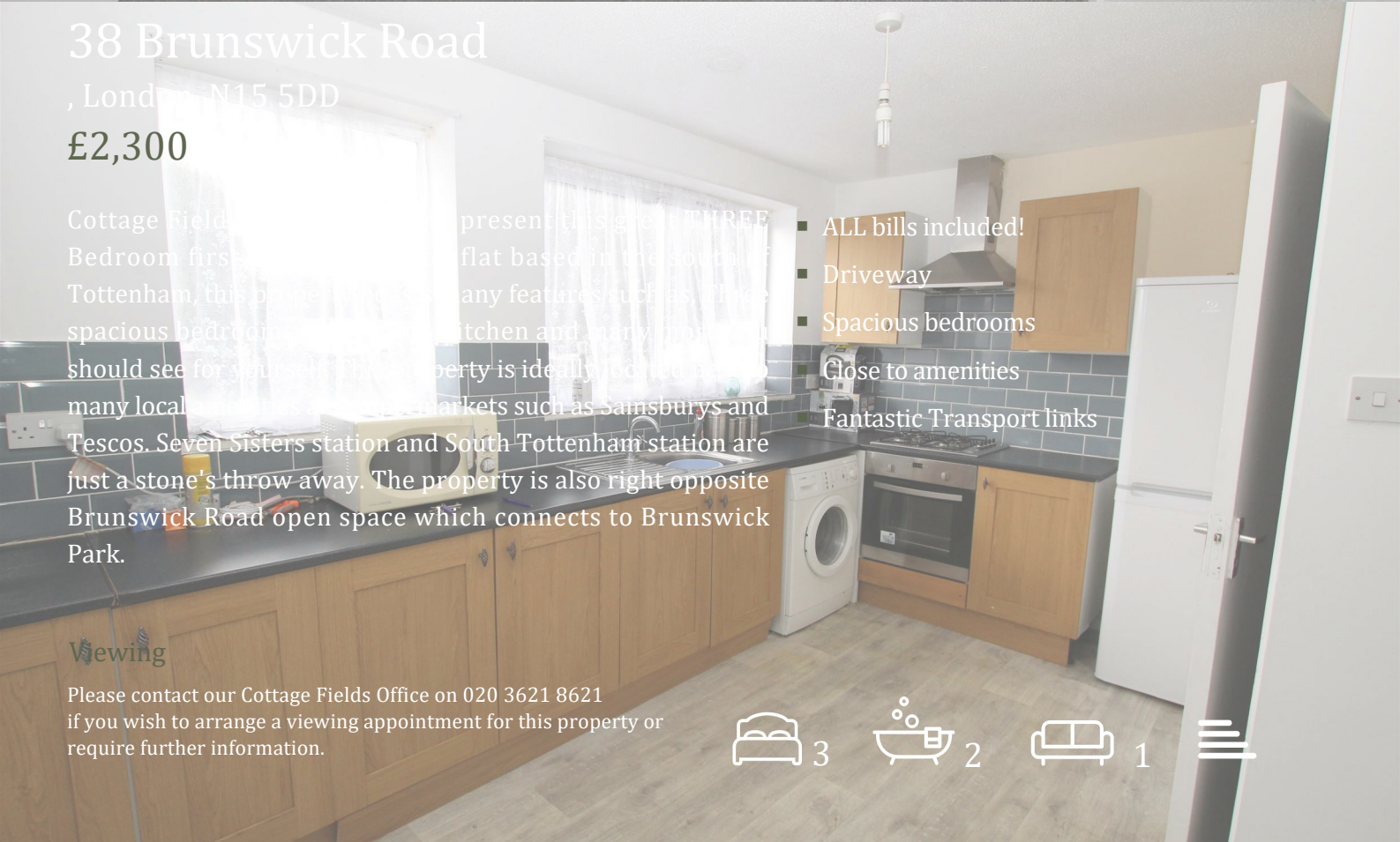
## 38 Brunswick Road

, London N15 5DD

£2,300

Cottage Fields Properties are pleased to present for sale a THREE Bedroom first floor flat based in the heart of Tottenham, this property has many features such as three spacious bedrooms, a modern kitchen and many more you should see for yourself! This property is ideally located close to many local amenities such as Sainsburys and Tesco. Seven Sisters station and South Tottenham station are just a stone's throw away. The property is also right opposite Brunswick Road open space which connects to Brunswick Park.

- ALL bills included!
- Driveway
- Spacious bedrooms
- Close to amenities
- Fantastic Transport links



Viewing

Please contact our Cottage Fields Office on 020 3621 8621 if you wish to arrange a viewing appointment for this property or require further information.



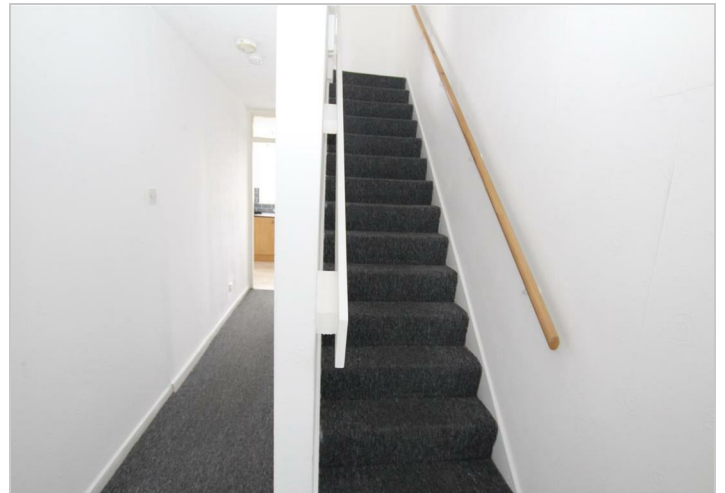
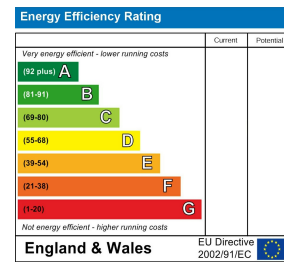
## Floor Plan



## Area Map



## Energy Efficiency Graph



These particulars, whilst believed to be accurate are set out as a general outline only for guidance and do not constitute any part of an offer or contract. Intending purchasers should not rely on them as statements of representation of fact, but must satisfy themselves by inspection or otherwise as to their accuracy. No person in this firm's employment has the authority to make or give any representation or warranty in respect of the property.