

DURDEN & HUNT

INTERNATIONAL



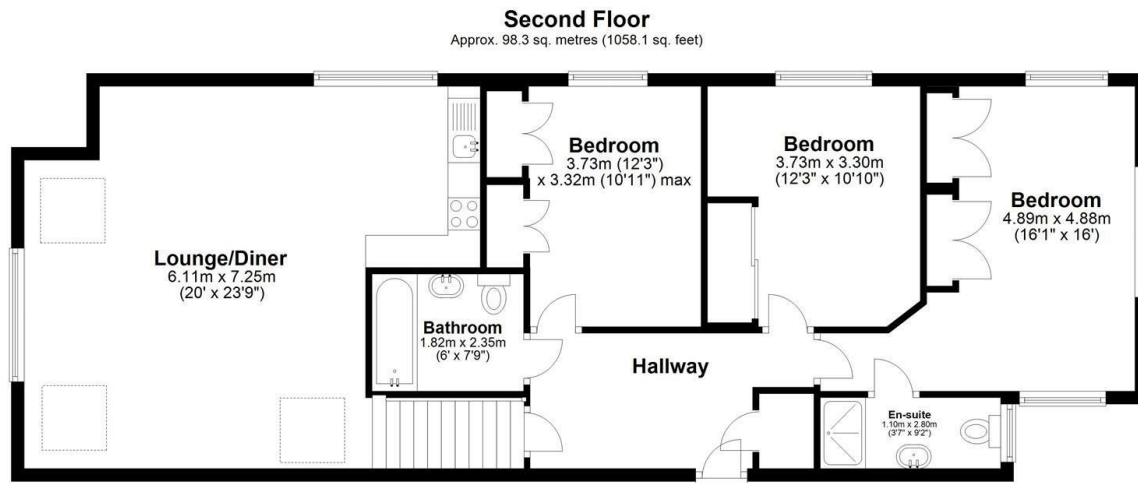
89 High Road, Loughton IG10

£2,750 Per Month

- Three Bedroom Apartment
- Recently Built
- Gated Parking
- Two Bathrooms (en-suite to master)
- Close To Loughton High Street & Loughton Station
- Secure Entry Fob Entrance
- Modern Open Plan Living
- Gated Development

309 High Road, Loughton, Essex, IG10 1AL
01277282222

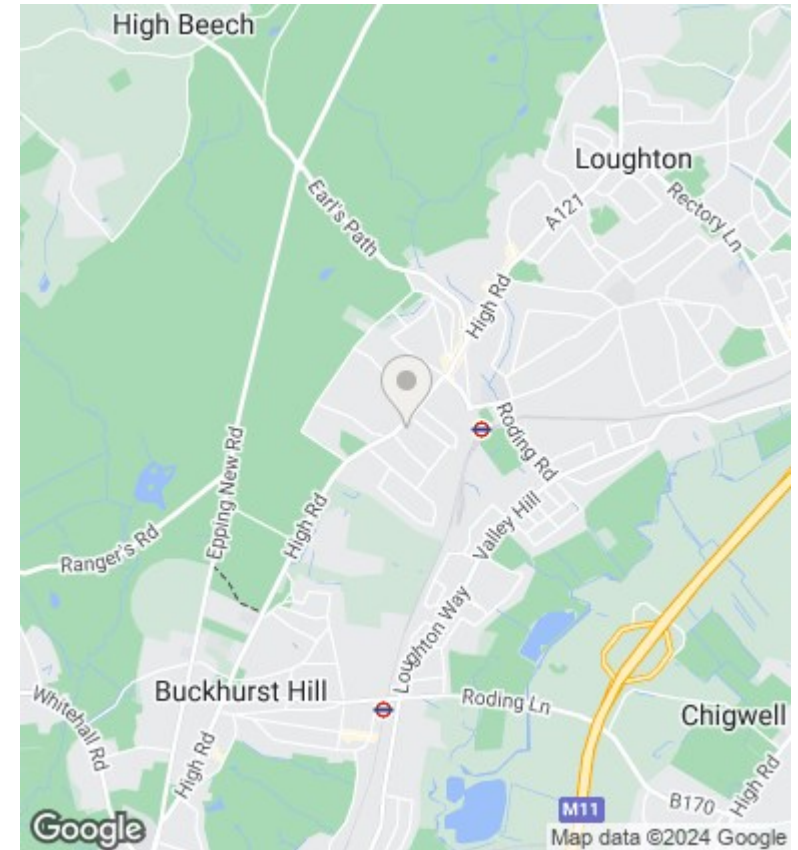
lettings@durdenandhunt.co.uk
<https://www.durdenandhunt.co.uk/>



Total area: approx. 98.3 sq. metres (1058.1 sq. feet)

For illustration purposes only. www.modephoto.co.uk @modephotok
Plan produced using PlanUp.

High Road, Loughton



Viewings

Viewings by arrangement only.
Call 01277282222 to make an appointment.

Council Tax Band

EPC Rating:

Energy Efficiency Rating		
	Current	Potential
<i>Very energy efficient - lower running costs</i>		
(92 plus) A		
(81-91) B		
(69-80) C		
(55-68) D		
(39-54) E		
(21-38) F		
(1-20) G		
<i>Not energy efficient - higher running costs</i>		
England & Wales	EU Directive 2002/91/EC	