

DURDEN & HUNT

INTERNATIONAL



89 High Road, Loughton IG10

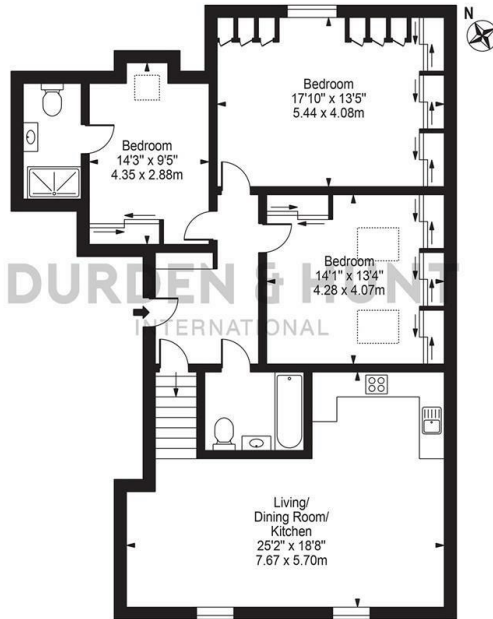
£2,650 Per Month

- Luxury Apartment
- Private Gated Parking
- Outdoor Terrace Area
- Three Bedroom
- Recently Built
- Close To Loughton Central Line Station
- Two Bathroom
- Modern Open Plan Living Room

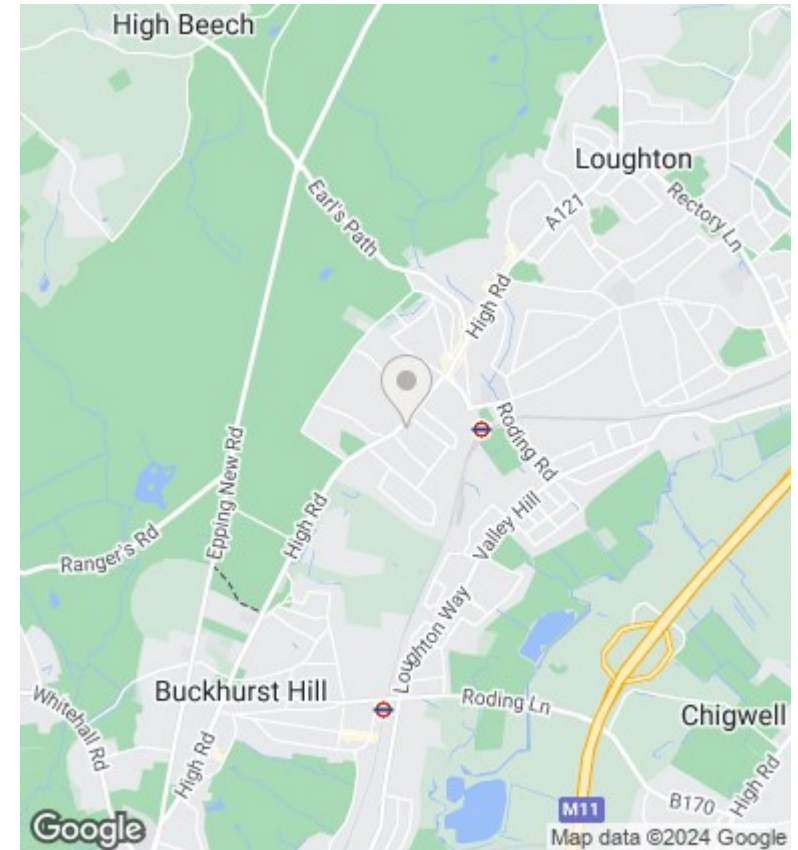
159 High Street, Hornchurch, Essex, RM11 3YD
01277282222

lettings@durdenandhunt.co.uk
<https://www.durdenandhunt.co.uk>

High Road
 Approx. Gross Internal Area 1194 Sq Ft - 110.88 Sq M



Third Floor
 For Illustration Purposes Only - Not To Scale
 This floor plan should be used as a general outline for guidance only and does not constitute in whole or in part an offer or contract. Any intending purchaser or lessee should satisfy themselves by inspection, searches, enquiries and full survey as to the correctness of each statement. Any areas, measurements or distances quoted are approximate and should not be used to value a property or be the basis of any sale or let.



Viewings

Viewings by arrangement only.
 Call 01277282222 to make an appointment.

Council Tax Band

EPC Rating:

Energy Efficiency Rating		
	Current	Potential
<i>Very energy efficient - lower running costs</i>		
(92 plus) A		
(81-91) B		
(69-80) C		
(55-68) D		
(39-54) E		
(21-38) F		
(1-20) G		
<i>Not energy efficient - higher running costs</i>		
England & Wales	EU Directive 2002/91/EC	