

DURDEN & HUNT

INTERNATIONAL

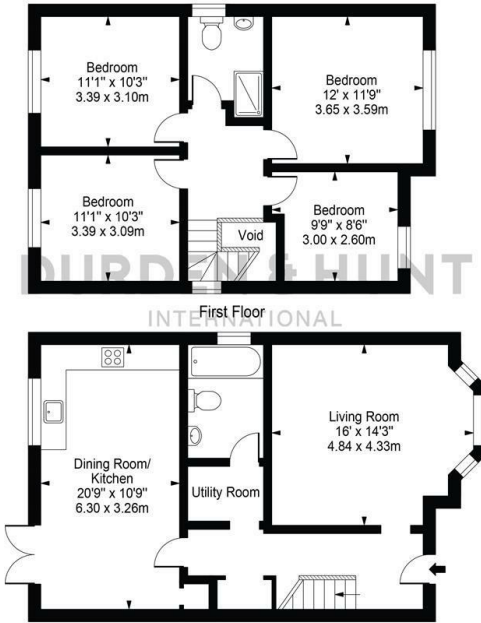


South End Road, Rainham RM13

Offers In Excess Of £600,000

- Brand New Home
- Off Street Parking
- Modern Kitchen/Diner
- 4 Bedrooms
- 2 Bathrooms
- Chain Free
- Detached
- Utility Room

South End Road
 Approx. Gross Internal Area 1232 Sq Ft - 114.47 Sq M
 (Excluding Void)



For Illustration Purposes Only - Not To Scale

This floor plan should be used as a general outline for guidance only and does not constitute in whole or in part an offer or contract. Any intending purchaser or lessee should satisfy themselves by inspection, searches, enquiries and full survey as to the correctness of each statement. Any areas, measurements or distances quoted are approximate and should not be used to value a property or be the basis of any sale or let.

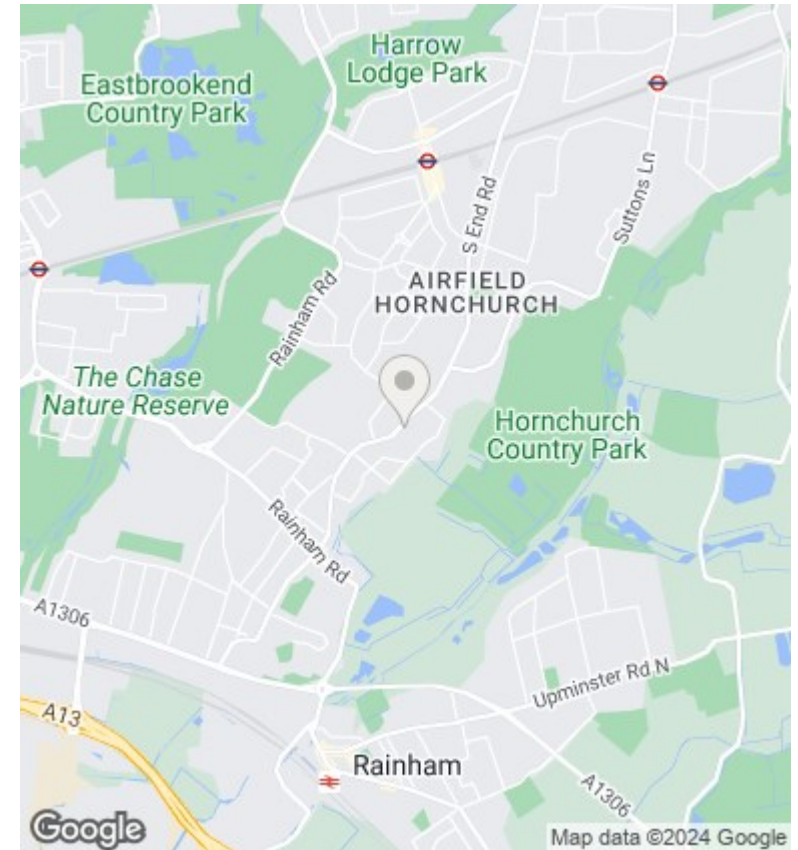
Viewings

Viewings by arrangement only. Call 01708 202 777 to make an appointment.

Council Tax Band

D

EPC Rating:



Energy Efficiency Rating

| | Current | Potential |
|--|-------------------------|-----------|
| <i>Very energy efficient - lower running costs</i> | | |
| (92 plus) A | | |
| (81-91) B | | |
| (69-80) C | | |
| (55-68) D | | |
| (39-54) E | | |
| (21-38) F | | |
| (1-20) G | | |
| <i>Not energy efficient - higher running costs</i> | | |
| England & Wales | EU Directive 2002/91/EC | |