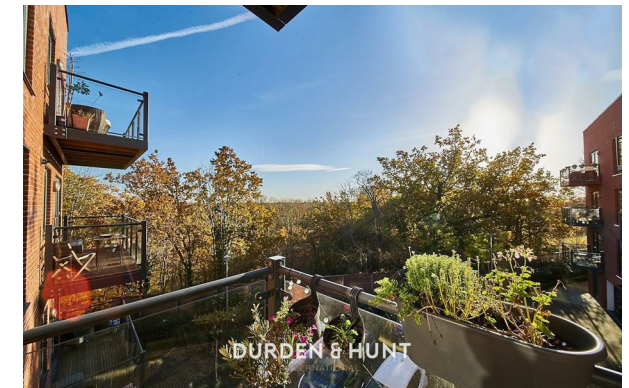


# DURDEN & HUNT

INTERNATIONAL



## Safflower Lane, Harold Wood RM3

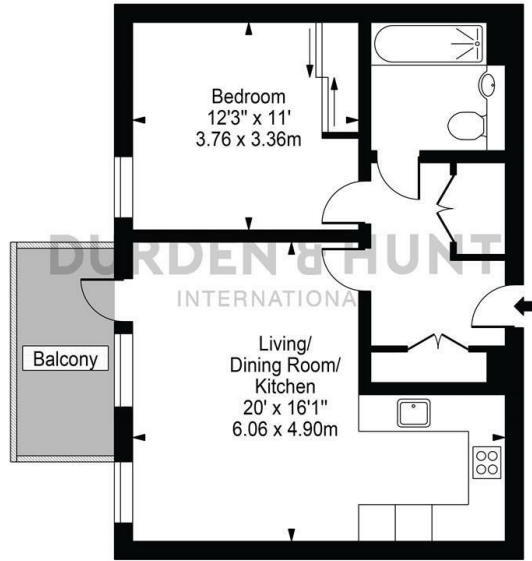
Offers In Excess Of £280,000

- One Bedroom Second Floor Apartment
- Contemporary Bathroom
- One Allocated Parking Space And Visitor Parking
- Open Plan Living, Dining And Kitchen Area
- Storage
- Private Balcony With Excellent Views
- Excellent Transport Links

159 High Street, Hornchurch, Essex, RM11 3YD  
01708 202 777

hornchurch@durdenandhunt.co.uk  
<https://www.durdenandhunt.co.uk>

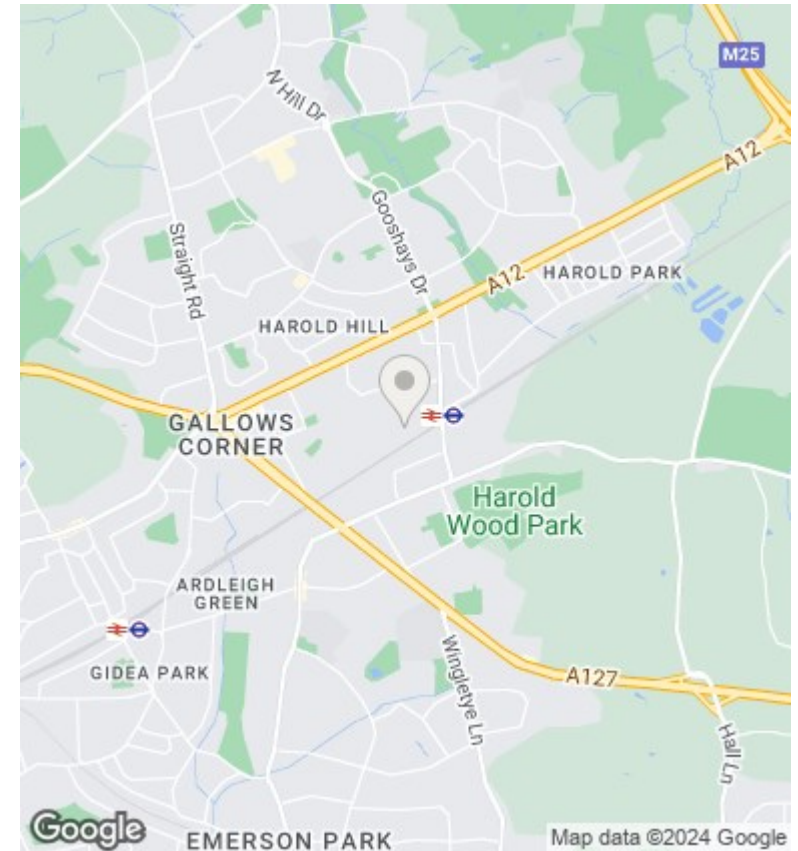
**Primula Court**  
 Approx. Gross Internal Area 553 Sq Ft - 51.40 Sq M



**Second Floor**

For Illustration Purposes Only - Not To Scale

This floor plan should be used as a general outline for guidance only and does not constitute in whole or in part an offer or contract. Any intending purchaser or lessee should satisfy themselves by inspection, searches, enquiries and full survey as to the correctness of each statement. Any areas, measurements or distances quoted are approximate and should not be used to value a property or be the basis of any sale or let.



## Viewings

Viewings by arrangement only. Call 01708 202 777 to make an appointment.

## Council Tax Band

C

## EPC Rating:

B

Energy Efficiency Rating		Current	Potential
<i>Very energy efficient - lower running costs</i>			
(92 plus)	<b>A</b>		
(81-91)	<b>B</b>	84	84
(69-80)	<b>C</b>		
(55-68)	<b>D</b>		
(39-54)	<b>E</b>		
(21-38)	<b>F</b>		
(1-20)	<b>G</b>		
<i>Not energy efficient - higher running costs</i>			
<b>England &amp; Wales</b>		EU Directive 2002/91/EC	