

DURDEN & HUNT

INTERNATIONAL



Juliette Mews, Romford RM1

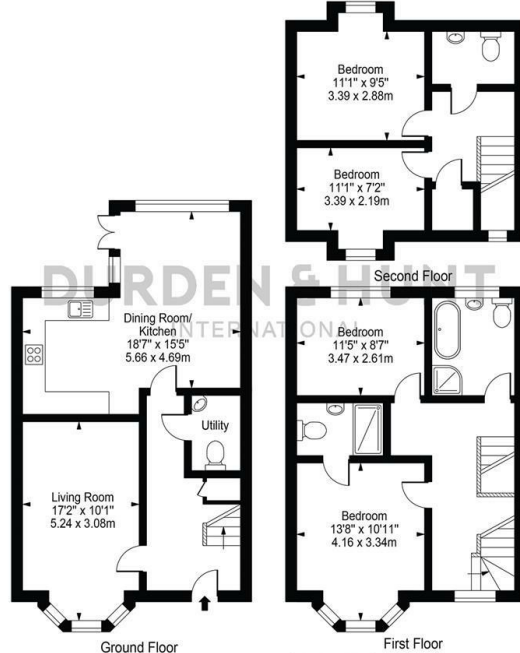
£2,500 Per Month

- Four bedroom modern family home located a short distance from popular train station.
- All four bedroom as good sizes.
- The property is located in a popular development that is a short walk to Romford Station and Romford Town Centre.
- On the ground floor there is a spacious living room with air conditioning, WC with utility area and open plan kitchen that opens onto conservatory area.
- The landlord is open to leaving some furniture, or removing.
- The first floor comprises two bedrooms and two bathrooms. The Top floor has two further bedrooms and a separate toilet.
- Available immediately.

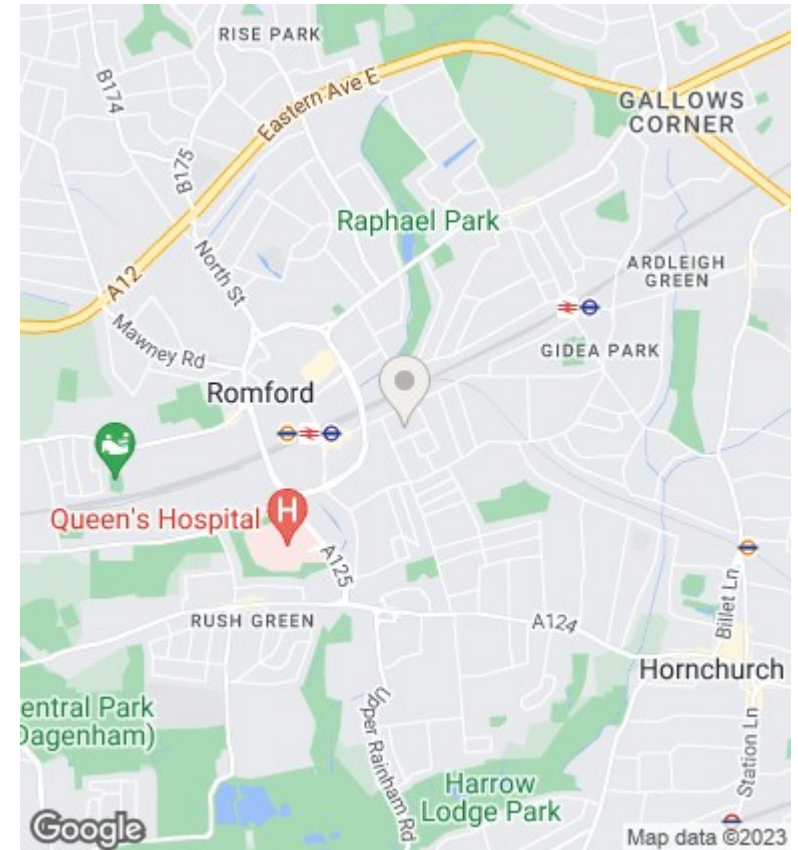
159 High Street, Hornchurch, Essex, RM11 3YD
01277282222

lettings@durdenandhunt.co.uk
<https://www.durdenandhunt.co.uk>

Juliette Mews
 Approx. Gross Internal Area 1426 Sq Ft - 132.48 Sq M



This floor plan should be used as a general outline for guidance only and does not constitute in whole or in part an offer or contract. Any intending purchaser or lessee should satisfy themselves by inspection, searches, enquiries and full survey as to the correctness of each statement. Any areas, measurements or distances quoted are approximate and should not be used to value a property or be the basis of any sale or let.



Viewings

Viewings by arrangement only.
 Call 012772822222 to make an appointment.

Council Tax Band

EPC Rating:

C

Energy Efficiency Rating		Current	Potential
<i>Very energy efficient - lower running costs</i>			
(92 plus) A			
(81-91) B		77	86
(69-80) C			
(55-68) D			
(39-54) E			
(21-38) F			
(1-20) G			
<i>Not energy efficient - higher running costs</i>			
England & Wales		EU Directive 2002/91/EC	