

# DURDEN & HUNT

INTERNATIONAL

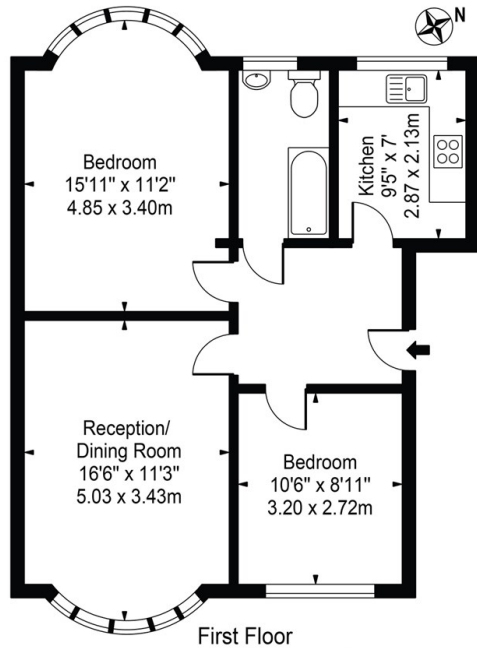


## Kingswood Road, London E11

£1,750 PCM

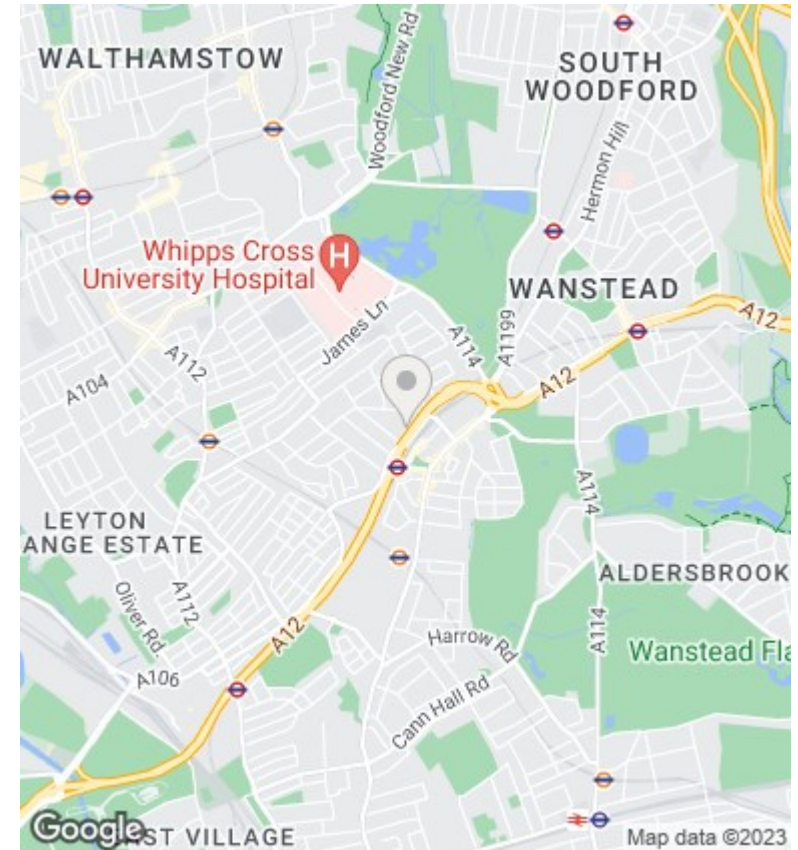
- First Floor
- Kitchen
- Good Road Links, Such As The A12
- Two Bedrooms
- A Short Walk To Leytonstone Station
- Communal Gardens
- Open Plan Lounge/Dining Area
- Close To Local Shops And Amenities
- Off Street Parking

**Locksley Hall**  
 Approx. Gross Internal Area 646 Sq Ft - 60.01 Sq M



First Floor  
 For Illustration Purposes Only - Not To Scale

This floor plan should be used as a general outline for guidance only and does not constitute in whole or in part an offer or contract. Any intending purchaser or lessee should satisfy themselves by inspection, searches, enquiries and full survey as to the correctness of each statement. Any areas, measurements or distances quoted are approximate and should not be used to value a property or be the basis of any sale or let.



**Viewings**

Viewings by arrangement only.  
 Call 01277282222 to make an appointment.

**Council Tax Band**

B

**EPC Rating:**

Energy Efficiency Rating		
	Current	Potential
<i>Very energy efficient - lower running costs</i>		
(92 plus) <b>A</b>		
(81-91) <b>B</b>		
(69-80) <b>C</b>		
(55-68) <b>D</b>		
(39-54) <b>E</b>		
(21-38) <b>F</b>		
(1-20) <b>G</b>		
<i>Not energy efficient - higher running costs</i>		
<b>England &amp; Wales</b>	EU Directive 2002/91/EC	