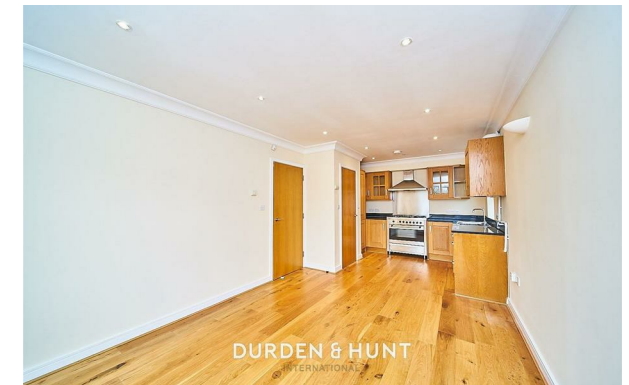


# DURDEN & HUNT

INTERNATIONAL



## Manor Road, Chigwell IG7

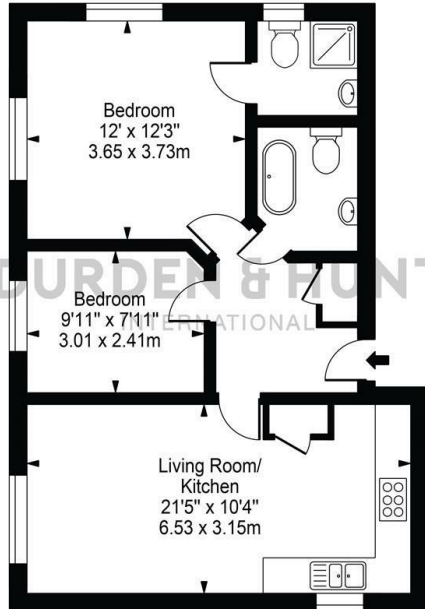
£1,800 Per Calendar Month

- Spacious Open Plan Living Room And Kitchen
- Family Bathroom
- Excellent Transport Links
- Master Bedroom With En Suite
- Secure Gated Parking
- Additional Bedroom
- Unfurnished

159 High Street, Hornchurch, Essex, RM11 3YD  
01277282222

[lettings@durdenandhunt.co.uk](mailto:lettings@durdenandhunt.co.uk)  
<https://www.durdenandhunt.co.uk>

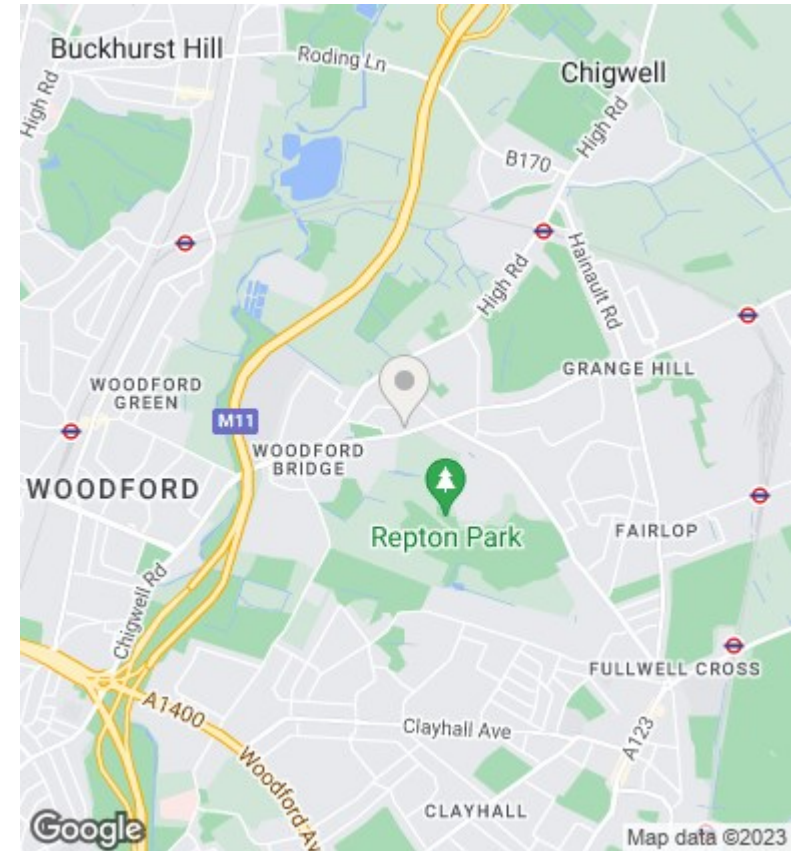
**Burney Court**  
 Approx. Gross Internal Area 616 Sq Ft - 57.20 Sq M



Ground Floor

For Illustration Purposes Only - Not To Scale

This floor plan should be used as a general outline for guidance only and does not constitute in whole or in part an offer or contract. Any intending purchaser or lessee should satisfy themselves by inspection, searches, enquiries and full survey as to the correctness of each statement. Any areas, measurements or distances quoted are approximate and should not be used to value a property or be the basis of any sale or let.



### Viewings

Viewings by arrangement only.  
 Call 012772822222 to make an appointment.

### Council Tax Band

### EPC Rating:

B

Energy Efficiency Rating		
	Current	Potential
Very energy efficient - lower running costs		
(92 plus) <b>A</b>		
(81-91) <b>B</b>	81	81
(69-80) <b>C</b>		
(55-68) <b>D</b>		
(39-54) <b>E</b>		
(21-38) <b>F</b>		
(1-20) <b>G</b>		
Not energy efficient - higher running costs		
<b>England &amp; Wales</b>	EU Directive 2002/91/EC	