

DURDEN & HUNT

INTERNATIONAL



Whitmore Avenue, Grays RM16

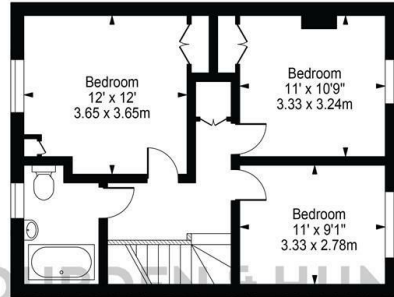
£1,300 Per Month

- Duplex Apartment
- Three Well Proportioned Bedrooms
- Unallocated Parking
- Good Sized Living And Dining Room
- Family Bathroom
- Excellent Transport Links
- Kitchen
- Communal Gardens

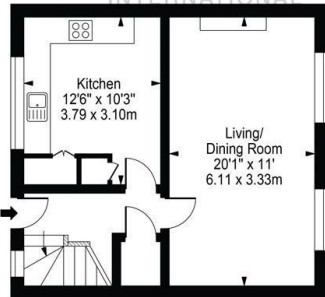
159 High Street, Hornchurch, Essex, RM11 3YD
01277282222

lettings@durdenandhunt.co.uk
<https://www.durdenandhunt.co.uk>

St. Cedds Court
 Approx. Gross Internal Area 972 Sq Ft - 90.28 Sq M



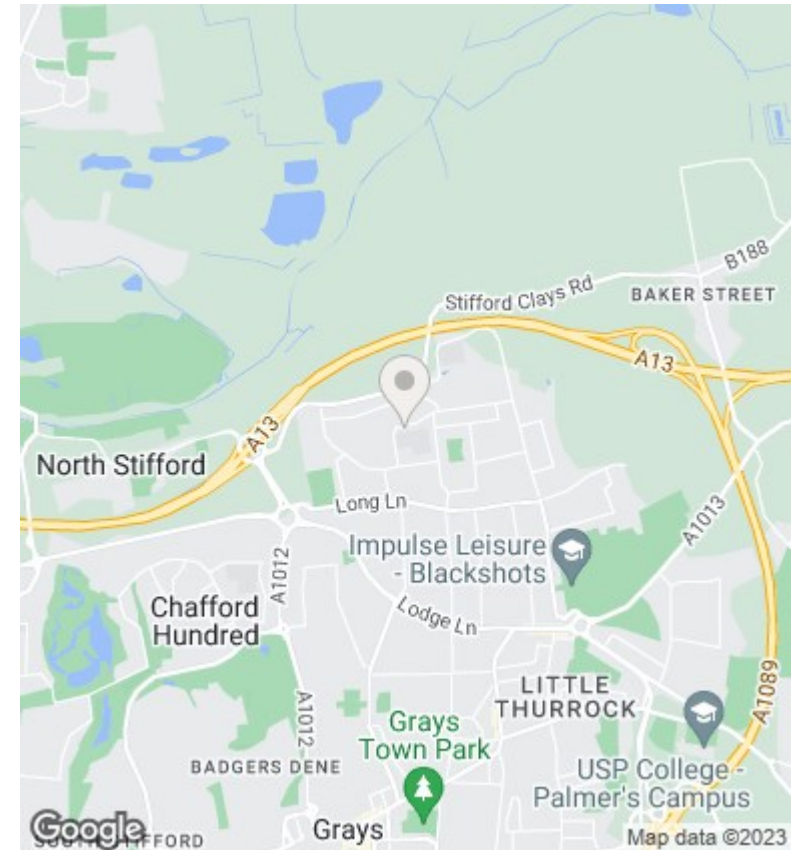
Second Floor



First Floor

For Illustration Purposes Only - Not To Scale

This floor plan should be used as a general outline for guidance only and does not constitute in whole or in part an offer or contract. Any intending purchaser or lessee should satisfy themselves by inspection, searches, enquiries and full survey as to the correctness of each statement. Any areas, measurements or distances quoted are approximate and should not be used to value a property or be the basis of any sale or let.



Viewings

Viewings by arrangement only.
 Call 012772822222 to make an appointment.

Council Tax Band

A

EPC Rating:

C

Energy Efficiency Rating		Current	Potential
<i>Very energy efficient - lower running costs</i>			
(92 plus) A			
(81-91) B		77	79
(69-80) C			
(55-68) D			
(39-54) E			
(21-38) F			
(1-20) G			
<i>Not energy efficient - higher running costs</i>			
England & Wales		EU Directive 2002/91/EC	