

# DURDEN & HUNT

INTERNATIONAL



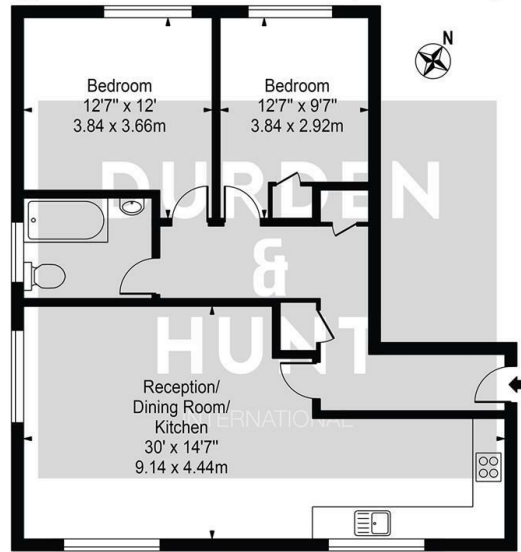
## Hemnall Street, Epping CM16

£1,750 Per Calendar Month

- Two Good Sized Bedrooms
- Kitchen With Integrated Appliances
- Second Floor
- Modern Bathroom
- Open Plan Lounge/Kitchen/Dining Area
- A Short Walk To Epping Underground Station

## Clark's Mews

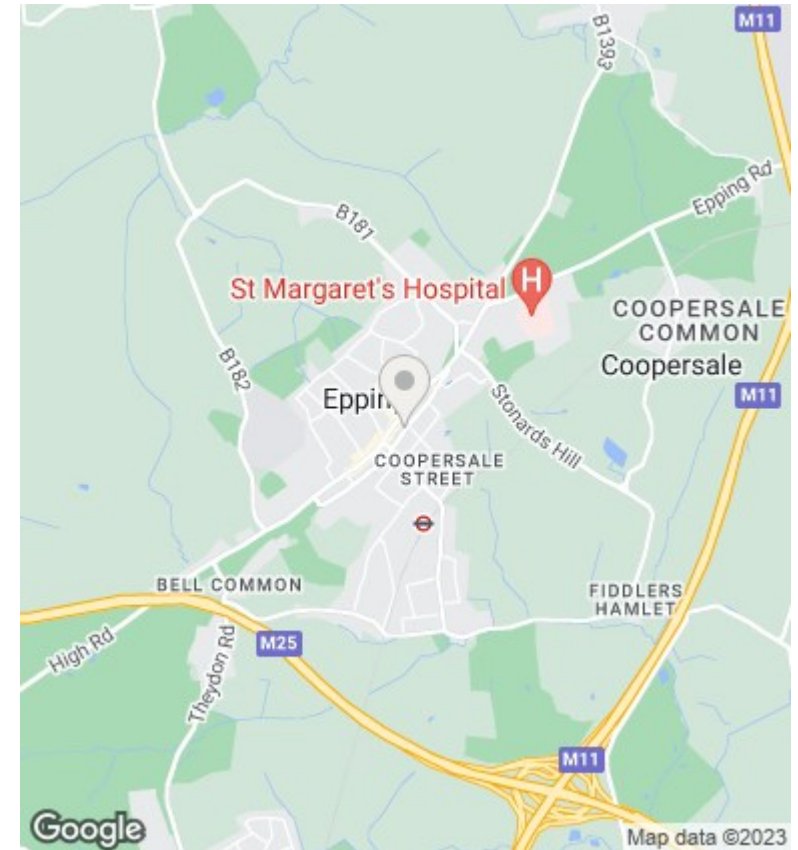
Approx. Gross Internal Area 797 Sq Ft - 74.04 Sq M



### Second Floor

For Illustration Purposes Only - Not To Scale

This floor plan should be used as a general outline for guidance only and does not constitute in whole or in part an offer or contract. Any intending purchaser or lessee should satisfy themselves by inspection, searches, enquiries and full survey as to the correctness of each statement. Any areas, measurements or distances quoted are approximate and should not be used to value a property or be the basis of any sale or let.



## Viewings

Viewings by arrangement only.  
Call 01277282222 to make an appointment.

## Council Tax Band

D

## EPC Rating:

| Energy Efficiency Rating                           |                            |           |
|--|----------------------------|-----------|
|  | Current                    | Potential |
| <i>Very energy efficient - lower running costs</i> |                            |           |
| (92 plus) <b>A</b>                                 |                            |           |
| (81-91) <b>B</b>                                   |                            |           |
| (69-80) <b>C</b>                                   |                            |           |
| (55-68) <b>D</b>                                   |                            |           |
| (39-54) <b>E</b>                                   |                            |           |
| (21-38) <b>F</b>                                   |                            |           |
| (1-20) <b>G</b>                                    |                            |           |
| <i>Not energy efficient - higher running costs</i> |                            |           |
| <b>England &amp; Wales</b>                         | EU Directive<br>2002/91/EC |           |