

# DURDEN & HUNT

INTERNATIONAL



## Lamplighters Close, Waltham Abbey EN9

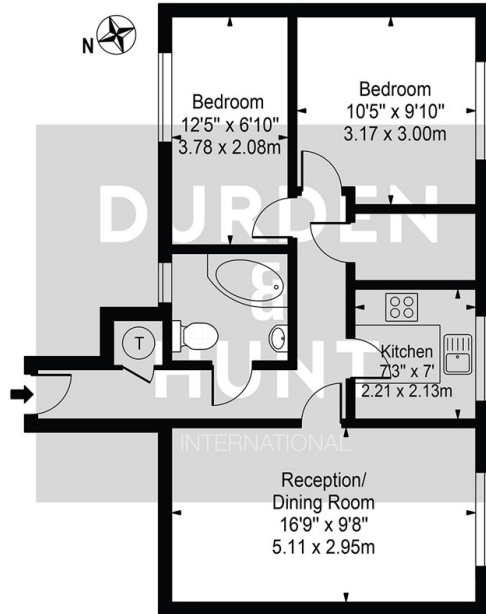
£1,350 PCM

- Two Double Bedrooms
- Lounge/Dining Area
- Communal Gardens
- Recently Refurbished - Available late April
- Ground Floor Apartment
- Well Sought After Development
- Easy Access To The M25
- One Bathroom
- Two Allocated Parking Spaces
- In Close Proximity To Epping Forest And High Beech

159 High Street, Hornchurch, Essex, RM11 3YD  
01277282222

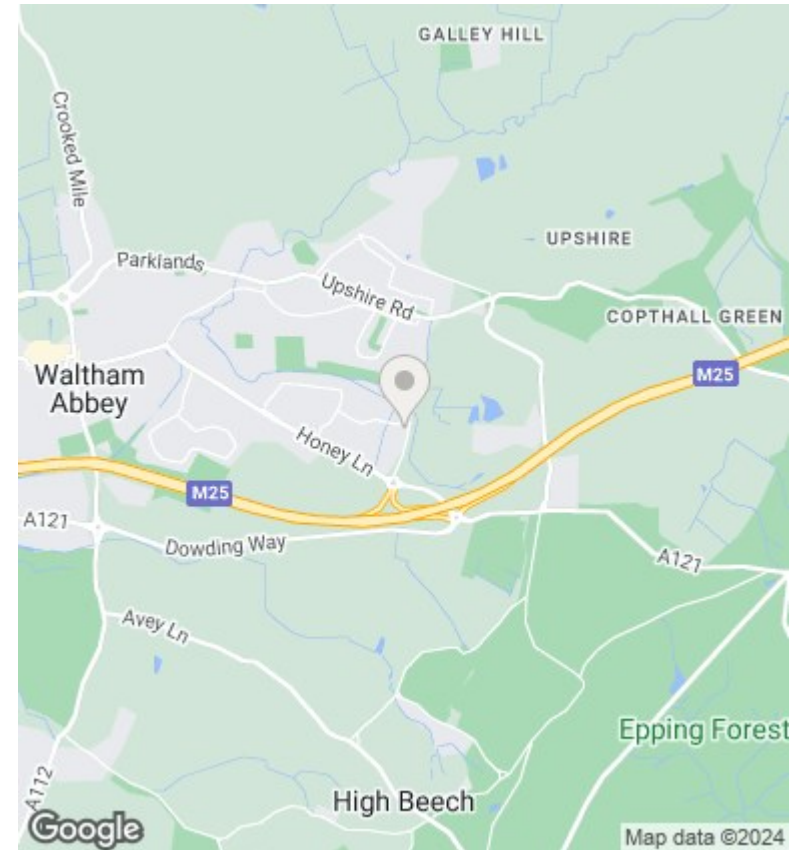
[lettings@durdenandhunt.co.uk](mailto:lettings@durdenandhunt.co.uk)  
<https://www.durdenandhunt.co.uk>

**Ashleigh Court**  
 Approx. Gross Internal Area 586 Sq Ft - 54.44 Sq M



**Ground Floor**  
 For Illustration Purposes Only - Not To Scale

This floor plan should be used as a general outline for guidance only and does not constitute in whole or in part an offer or contract. Any intending purchaser or lessee should satisfy themselves by inspection, searches, enquiries and full survey as to the correctness of each statement. Any areas, measurements or distances quoted are approximate and should not be used to value a property or be the basis of any sale or let.



**Viewings**

Viewings by arrangement only.  
 Call 01277282222 to make an appointment.

**Council Tax Band**

**EPC Rating:**

Energy Efficiency Rating		
	Current	Potential
Very energy efficient - lower running costs		
(92 plus) <b>A</b>		
(81-91) <b>B</b>		
(69-80) <b>C</b>		
(55-68) <b>D</b>		
(39-54) <b>E</b>		
(21-38) <b>F</b>		
(1-20) <b>G</b>		
Not energy efficient - higher running costs		
<b>England &amp; Wales</b>	EU Directive 2002/91/EC	