

DURDEN & HUNT

INTERNATIONAL



Scarfe Way, Colchester CO4

£1,050 Per Month

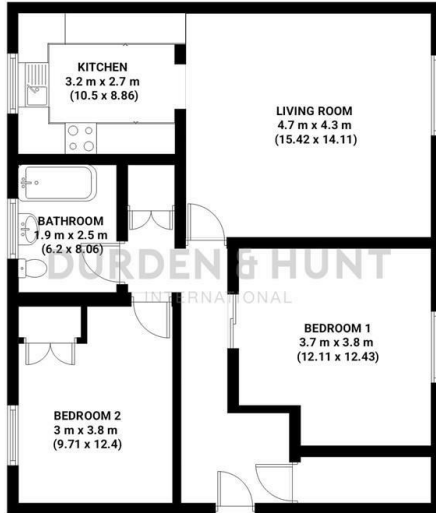
- Good Sized Living Room With Linked Kitchen
- Two Double Sized Bedrooms
- Family Bathroom
- Unallocated Parking
- Good Transport Links
- Unfurnished

159 High Street, Hornchurch, Essex, RM11 3YD
01277282222

lettings@durdenandhunt.co.uk
<https://www.durdenandhunt.co.uk>

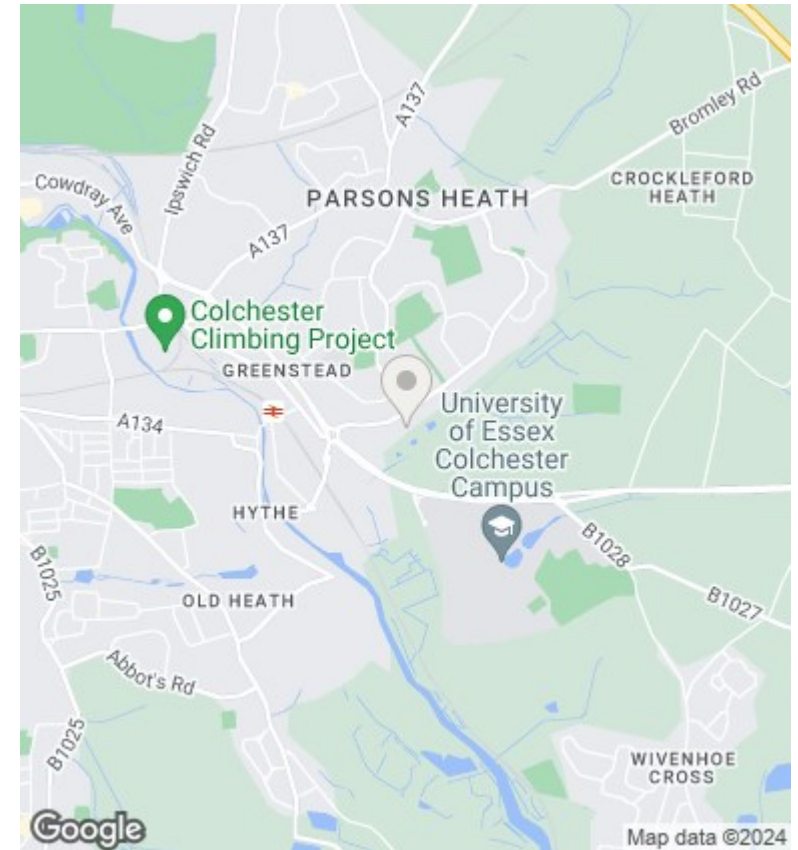
Scarfe Way

Total area: approx 68.45 m² (736.74 sq. feet)



THIS PLAN IS FOR ILLUSTRATIVE PURPOSES ONLY

Whilst every attempt has been made to ensure the accuracy of the floor plan contained here, measurements of doors, windows, rooms and any other items are approximate and no responsibility is taken for any error, omission or misstatement.



Viewings

Viewings by arrangement only.
Call 01277282222 to make an appointment.

Council Tax Band

A

EPC Rating:

D

Energy Efficiency Rating		Current	Potential
<i>Very energy efficient - lower running costs</i>			
(92 plus)	A		
(81-91)	B		
(69-80)	C		
(55-68)	D	57	64
(39-54)	E		
(21-38)	F		
(1-20)	G		
<i>Not energy efficient - higher running costs</i>			
England & Wales		EU Directive 2002/91/EC	