

DURDEN & HUNT

INTERNATIONAL



Carla Court, Romford RM2

£245,000

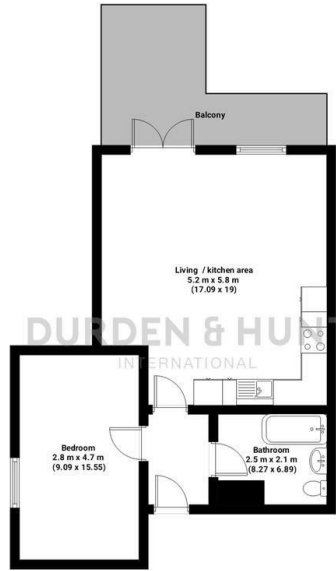
- Newly Built Development
- Family Bathroom
- Excellent Transport Links
- Modern Open Plan Kitchen And Living Area
- Balcony
- Good Sized Bedroom
- Allocated Parking

159 High Street, Hornchurch, Essex, RM11 3YD
01708 202 777

hornchurch@durdenandhunt.co.uk
<https://www.durdenandhunt.co.uk>

Carla Court

Total area: approx 50.06 m² (538.87 sq. feet)



THIS PLAN IS FOR ILLUSTRATIVE PURPOSES ONLY

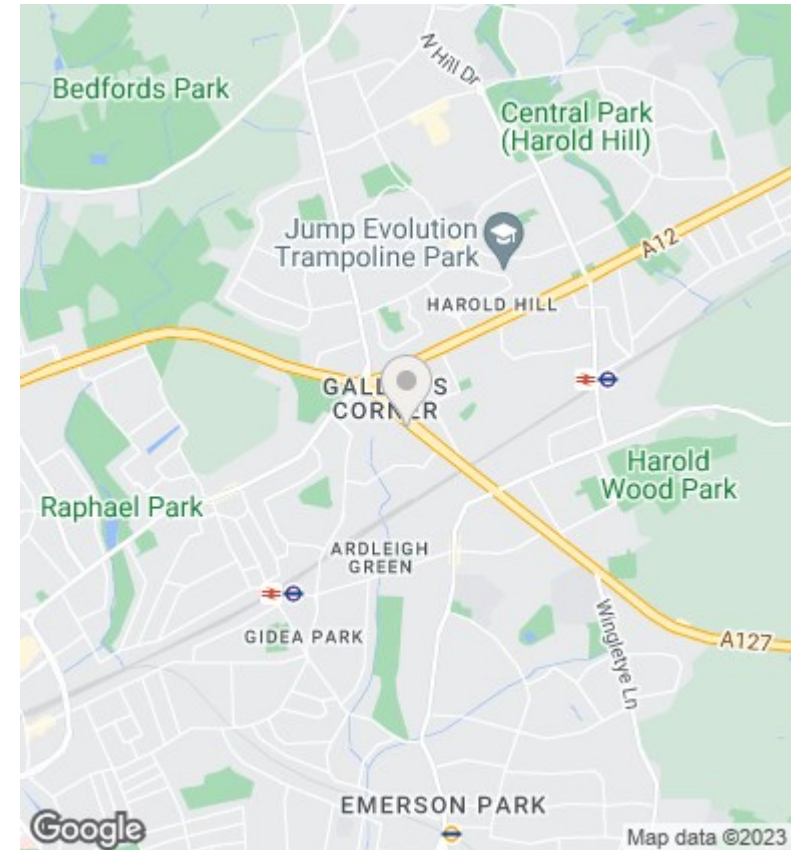
Whilst every attempt has been made to ensure the accuracy of the floor plan contained here, measurements of doors, windows, rooms and any other items are approximate and no responsibility is taken for any error, omission or misstatement.

Viewings

Viewings by arrangement only. Call 01708 202 777 to make an appointment.

Council Tax Band

EPC Rating:



Energy Efficiency Rating		
	Current	Potential
<i>Very energy efficient - lower running costs</i>		
(92 plus) A		
(81-91) B		
(69-80) C		
(55-68) D		
(39-54) E		
(21-38) F		
(1-20) G		
<i>Not energy efficient - higher running costs</i>		
England & Wales	EU Directive 2002/91/EC	