

DURDEN & HUNT

INTERNATIONAL



Malt House Place, Romford RM1

£275,000

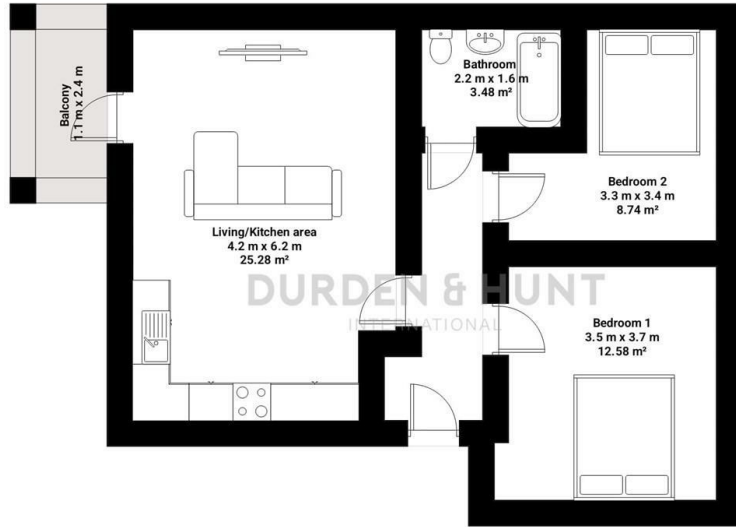
- Gated Development
- Modern Bathroom
- Excellent Transport Links
- Open Plan Kitchen, Living And Dining Room
- Private Balcony
- Two Double Bedrooms
- Communal Grounds

159 High Street, Hornchurch, Essex, RM11 3YD
01708 202 777

hornchurch@durdenandhunt.co.uk
<https://www.durdenandhunt.co.uk>

Malt House

Total area: approx 56.88 sq. metres (612.3 sq. feet)



THIS PLAN IS FOR ILLUSTRATIVE PURPOSES ONLY

Whilst every attempt has been made to ensure the accuracy of the floor plan contained here, measurements of doors, windows, rooms and any other items are approximate and no responsibility is taken for any error, omission or misstatement.



Viewings

Viewings by arrangement only. Call 01708 202 777 to make an appointment.

Council Tax Band

D

EPC Rating:

B

Energy Efficiency Rating		Current	Potential
<i>Very energy efficient - lower running costs</i>			
(92 plus) A			
(81-91) B		82	82
(69-80) C			
(55-68) D			
(39-54) E			
(21-38) F			
(1-20) G			
<i>Not energy efficient - higher running costs</i>			
England & Wales		EU Directive 2002/91/EC	