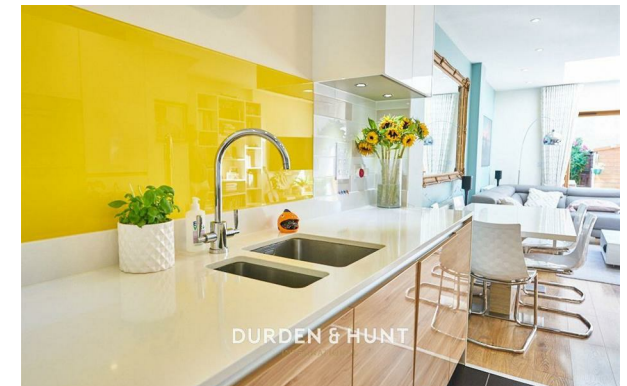


# DURDEN & HUNT

INTERNATIONAL



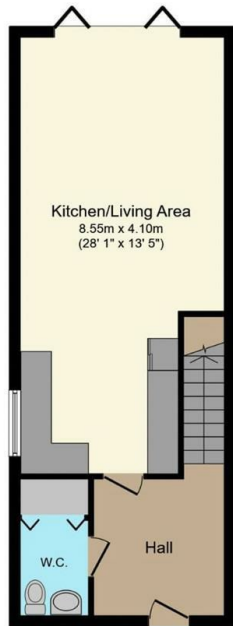
## Ashflower Drive, Harold Wood RM3

£575,000

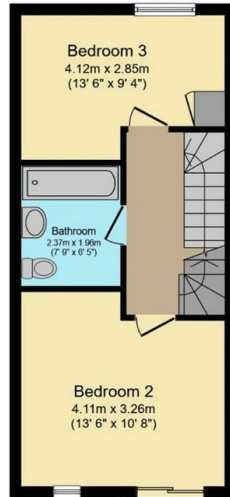
- Large Open Plan Kitchen, Living And Dining Room
- Master Bedroom With En Suite, Dressing Area And Private Balcony
- Additional Two Bedrooms
- Family Bathroom And Downstairs WC
- Garden With Shed
- Off Road Parking
- Excellent Transport Links

159 High Street, Hornchurch, Essex, RM11 3YD  
01708 202 777

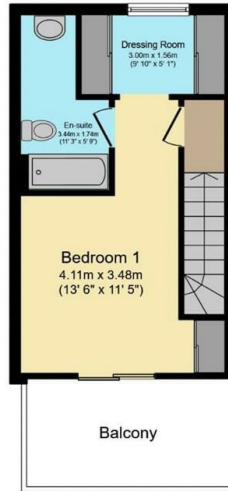
hornchurch@durdenandhunt.co.uk  
<https://www.durdenandhunt.co.uk>



Ground Floor

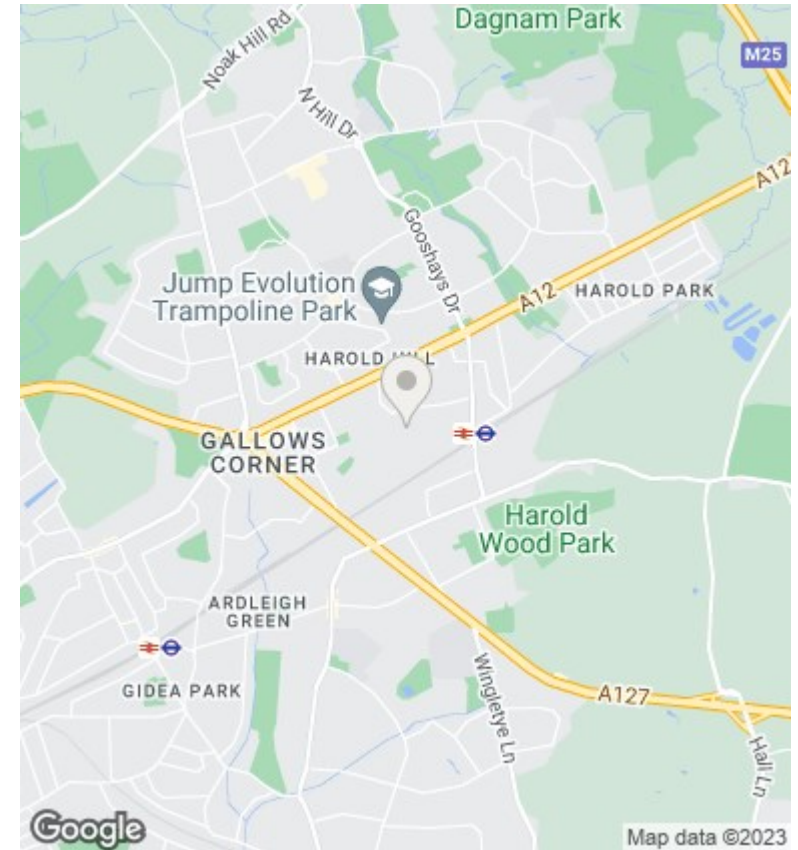


First Floor



Second Floor

Total floor area 110.0 sq. m. (1,184 sq. ft.) approx



## Viewings

Viewings by arrangement only. Call 01708 202 777 to make an appointment.

## Council Tax Band

D

## EPC Rating:

B

Energy Efficiency Rating		Current	Potential
<i>Very energy efficient - lower running costs</i>			
(92 plus) <b>A</b>			
(81-91) <b>B</b>		84	84
(69-80) <b>C</b>			
(55-68) <b>D</b>			
(39-54) <b>E</b>			
(21-38) <b>F</b>			
(1-20) <b>G</b>			
<i>Not energy efficient - higher running costs</i>			
<b>England &amp; Wales</b>		EU Directive 2002/91/EC	