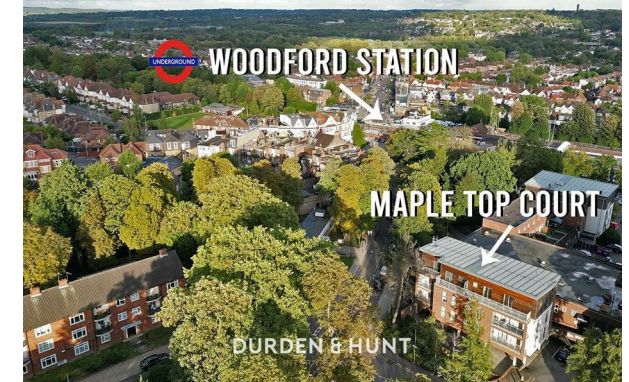


DURDEN & HUNT

INTERNATIONAL



Maple Top Court, Woodford Green IG8

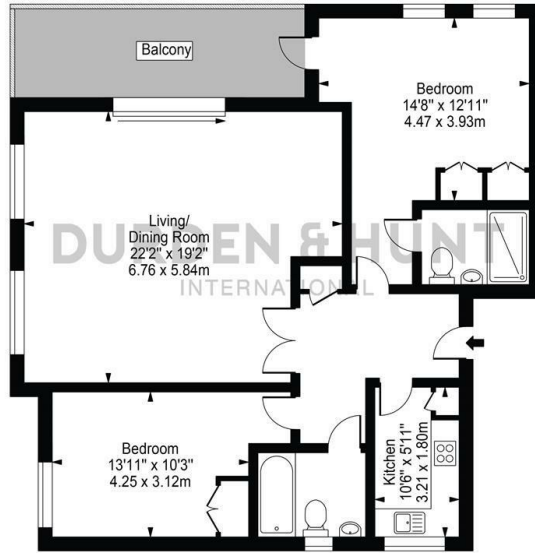
Offers In Excess Of £425,000

- First Floor Apartment
- Master Bedroom With En Suite And Fitted Wardrobes
- Private Balcony
- Spacious Open Plan Living And Dining Room
- Additional Bedroom
- Undercover Parking
- Fitted Kitchen
- Family Bathroom
- Excellent Transport Links

309 High Road, Loughton, Essex, IG10 1AL
0203 026 0160

loughton@durdenandhunt.co.uk
<https://www.durdenandhunt.co.uk/>

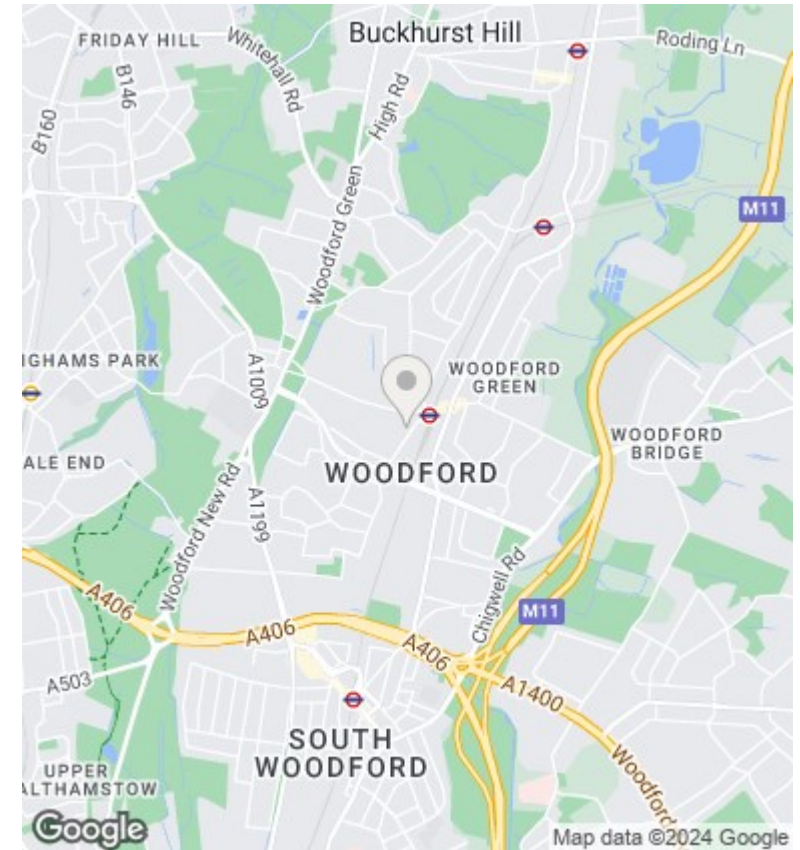
Maple Top Court
 Approx. Gross Internal Area 1046 Sq Ft - 97.20 Sq M



First Floor

For Illustration Purposes Only - Not To Scale

This floor plan should be used as a general outline for guidance only and does not constitute in whole or in part an offer or contract. Any intending purchaser or lessee should satisfy themselves by inspection, searches, enquiries and full survey as to the correctness of each statement. Any areas, measurements or distances quoted are approximate and should not be used to value a property or be the basis of any sale or let.



Viewings

Viewings by arrangement only. Call 0203 026 0160 to make an appointment.

Council Tax Band

D

EPC Rating:

C

Energy Efficiency Rating		Current	Potential
<i>Very energy efficient - lower running costs</i>			
(92 plus) A			
(81-91) B			
(69-80) C		72	81
(55-68) D			
(39-54) E			
(21-38) F			
(1-20) G			
<i>Not energy efficient - higher running costs</i>			
England & Wales		EU Directive 2002/91/EC	