

# DURDEN & HUNT

INTERNATIONAL



## Ingatestone Road, Woodford Green IG8

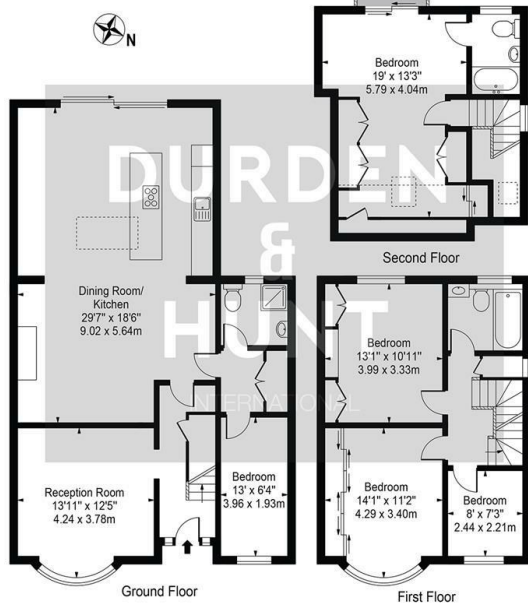
Offers Over £900,000

- Open Plan Dining Room And Kitchen
- Downstairs Bedroom
- Good Sized Garden
- Reception Room
- Four Additional Bedrooms Three With Fitted Wardrobes And One Of Which Consists Of An En Suite
- Private Driveway
- Downstairs Shower Room
- Family Bathroom
- Excellent Transport Links

309 High Road, Loughton, Essex, IG10 1AL  
0203 026 0160

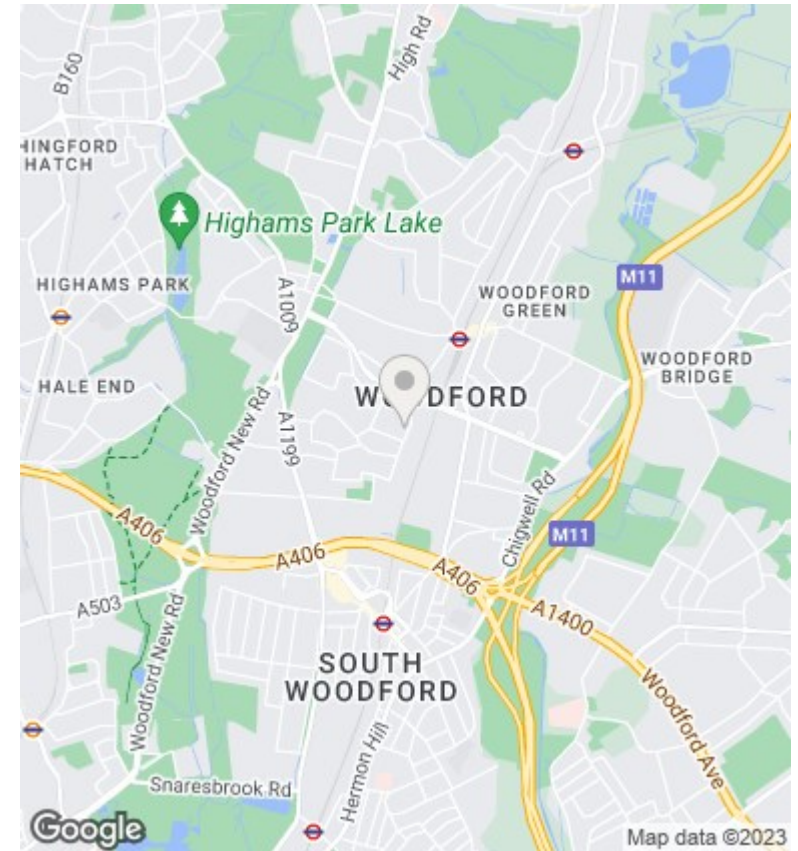
[loughton@durdenandhunt.co.uk](mailto:loughton@durdenandhunt.co.uk)  
<https://www.durdenandhunt.co.uk/>

**Ingatestone Road**  
 Approx. Total Internal Area 1779 Sq Ft - 165.27 Sq M  
 (Including Restricted Height Area)  
 Approx. Gross Internal Area 1719 Sq Ft - 159.70 Sq M  
 (Excluding Restricted Height Area)



For Illustration Purposes Only - Not To Scale

This floor plan should be used as a general outline for guidance only and does not constitute in whole or in part an offer or contract. Any intending purchaser or lessee should satisfy themselves by inspection, searches, enquiries and full survey as to the correctness of each statement. Any areas, measurements or distances quoted are approximate and should not be used to value a property or be the basis of any sale or let.



### Viewings

Viewings by arrangement only. Call 0203 026 0160 to make an appointment.

### Council Tax Band

E

### EPC Rating:

Energy Efficiency Rating		Current	Potential
<i>Very energy efficient - lower running costs</i>			
(92 plus) <b>A</b>			
(81-91) <b>B</b>			
(69-80) <b>C</b>			
(55-68) <b>D</b>			
(39-54) <b>E</b>			
(21-38) <b>F</b>			
(1-20) <b>G</b>			
<i>Not energy efficient - higher running costs</i>			
<b>England &amp; Wales</b>		EU Directive 2002/91/EC	